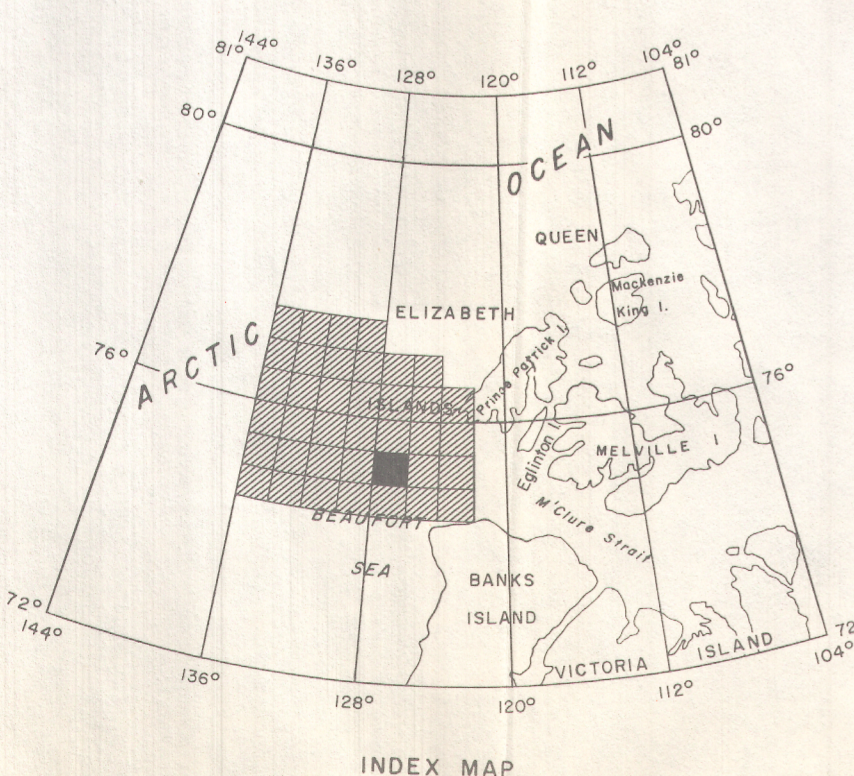
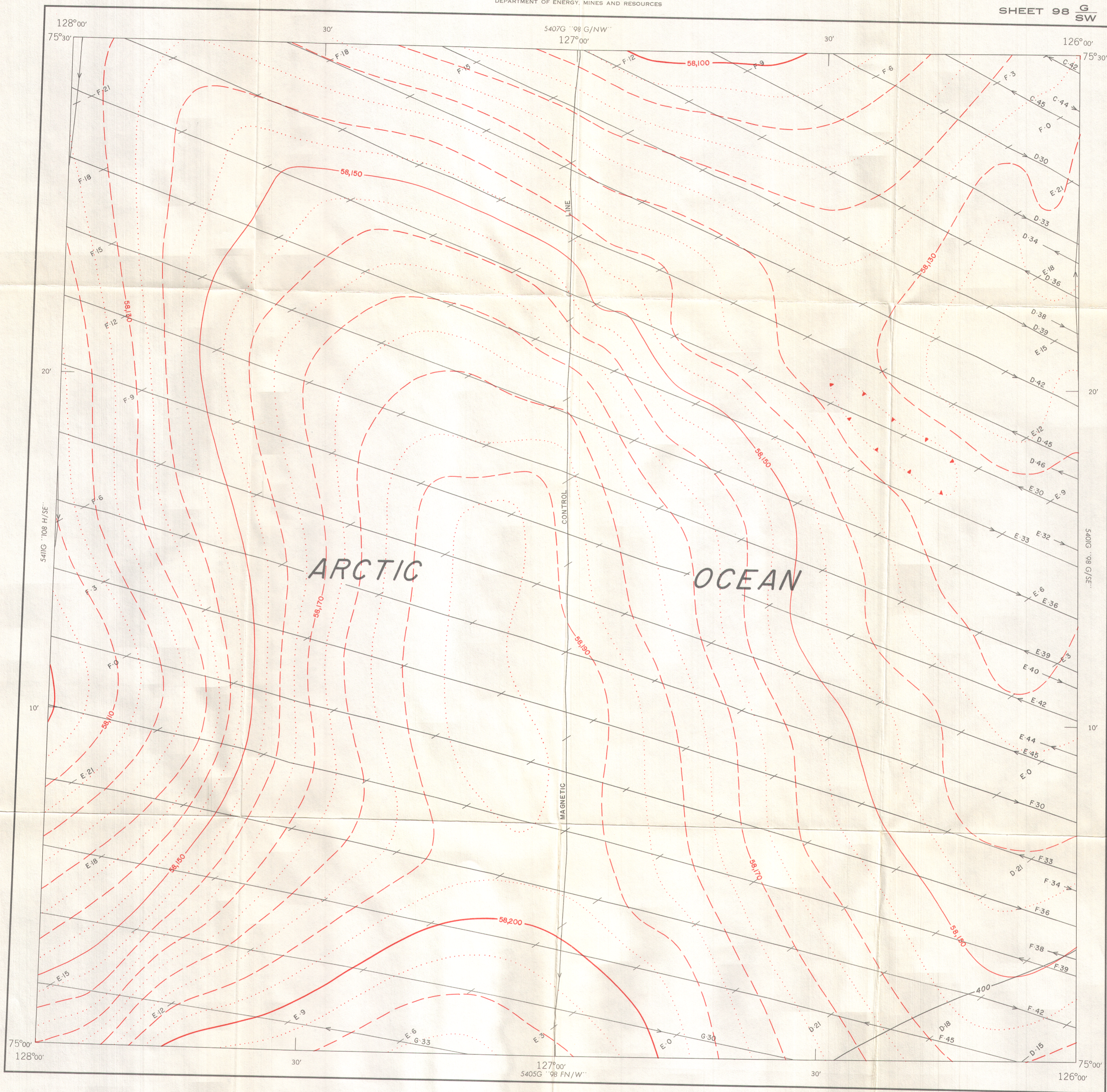


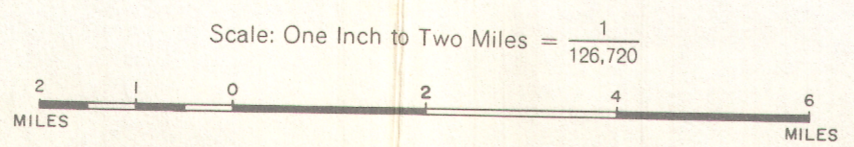
AEROMAGNETIC SERIES

GEOLOGICAL SURVEY OF CANADA  
DEPARTMENT OF ENERGY, MINES AND RESOURCES

SHEET 98 <sup>G</sup>/<sub>SW</sub>



MAP 5406G  
**POLAR CONTINENTAL SHELF**  
SHEET 98 <sup>G</sup>/<sub>SW</sub>  
DISTRICT OF FRANKLIN  
NORTHWEST TERRITORIES



COPIES OF THIS MAP MAY BE OBTAINED FROM THE DIRECTOR, GEOLOGICAL SURVEY OF CANADA, OTTAWA.

- ISOMAGNETIC LINES (absolute total field)
- 500 gammas . . . . .
- 100 gammas . . . . .
- 50 gammas . . . . .
- 10 gammas . . . . .
- 5 gammas . . . . .
- Magnetic Depression . . . . .
- Flight Line . . . . . A 20 . . . . . B 40

Flight altitude: 1000 feet above sea-level.  
No correction has been made for regional variation.  
Airborne Magnetic Survey, flown April 1968  
by Survair Ltd., Ottawa.  
Decca navigation (Eglington Island Decca Chain, 1968) was used to direct the course of the aircraft and to determine its track. Details available from Polar Continental Shelf Project, Department of Energy, Mines and Resources, Ottawa.  
Lambert Conformal Projection—standard parallels 74°02'30" and 77°12'30".

GEOPHYSICS PAPER 5406  
**POLAR CONTINENTAL SHELF**  
NORTHWEST TERRITORIES  
SHEET 98 <sup>G</sup>/<sub>SW</sub>

PUBLISHED 1968