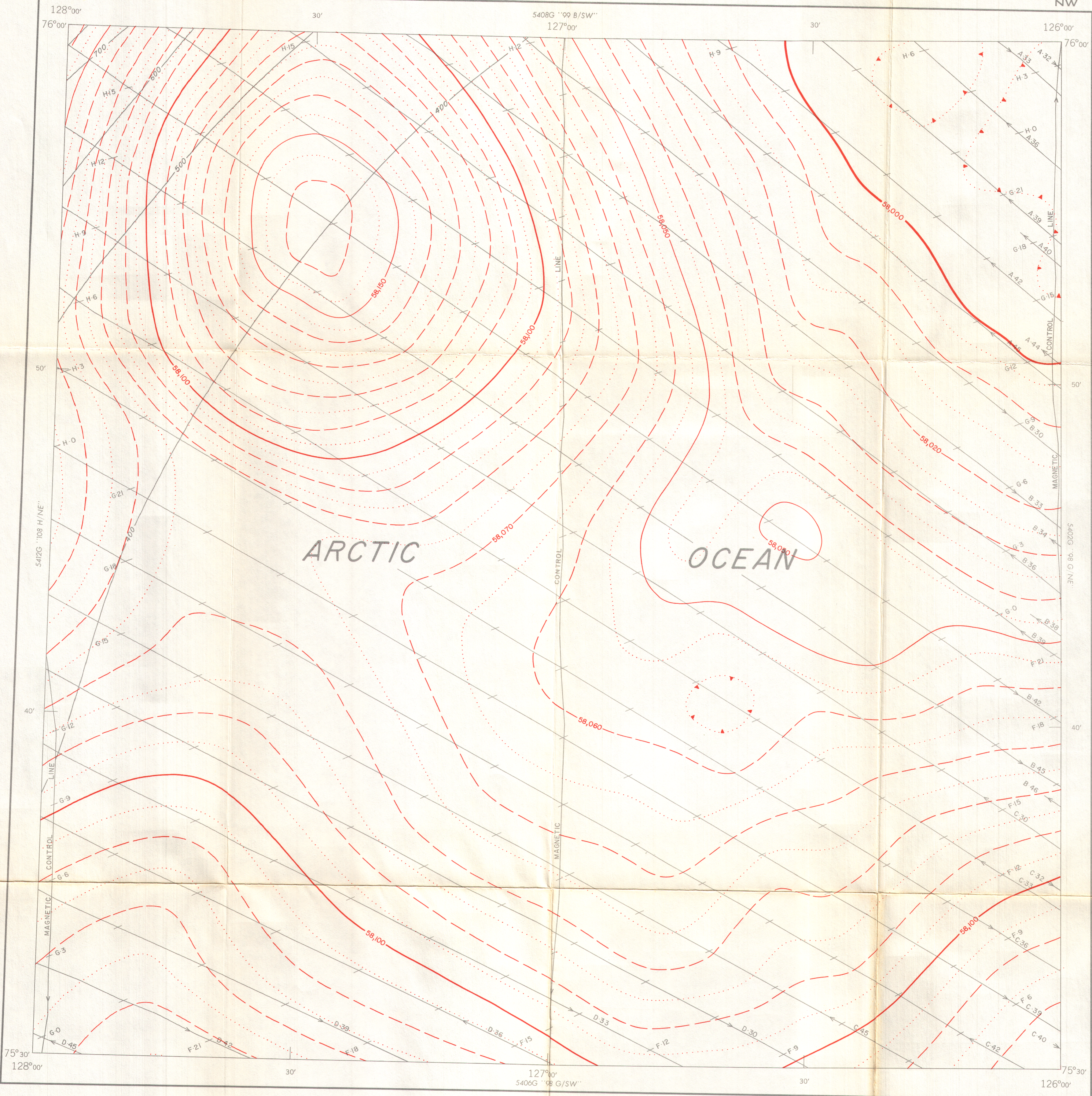


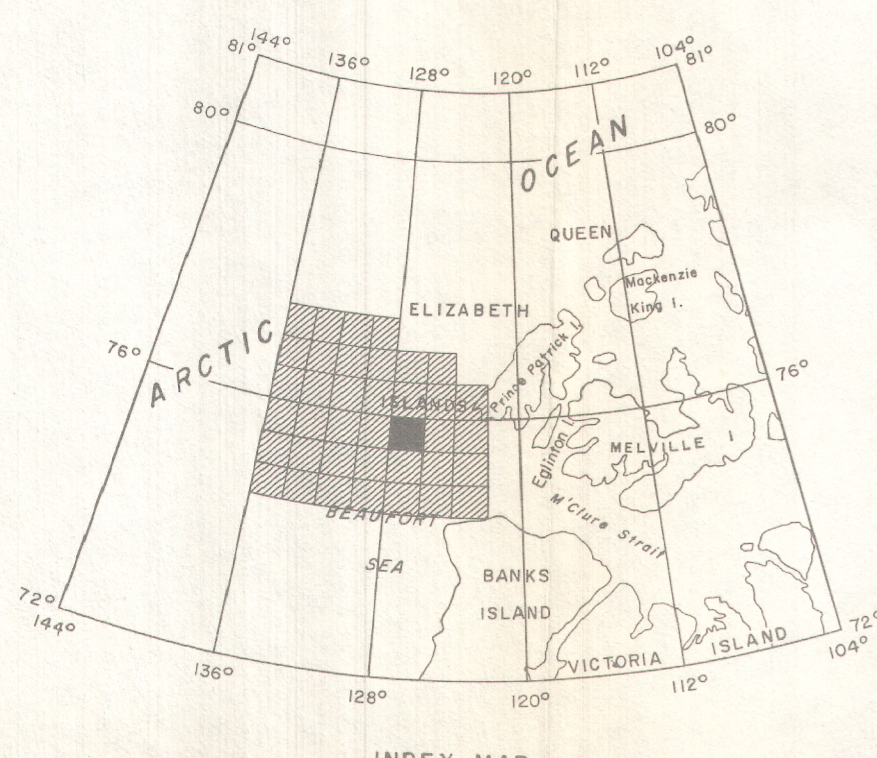
AEROMAGNETIC SERIES

GEOLOGICAL SURVEY OF CANADA  
DEPARTMENT OF ENERGY, MINES AND RESOURCES

SHEET 98 <sup>G</sup>/<sub>NW</sub>



PUBLISHED 1968



INDEX MAP

MAP 5407G

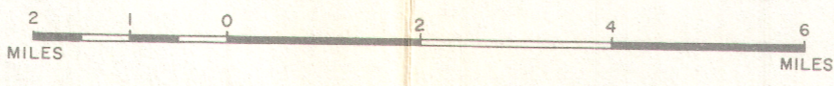
### POLAR CONTINENTAL SHELF

SHEET 98 <sup>G</sup>/<sub>NW</sub>

DISTRICT OF FRANKLIN  
NORTHWEST TERRITORIES

Bathymetric contours in metres  
below sea-level — 100 —

Scale: One Inch to Two Miles =  $\frac{1}{126,720}$



COPIES OF THIS MAP MAY BE OBTAINED FROM THE  
DIRECTOR, GEOLOGICAL SURVEY OF CANADA, OTTAWA.

#### ISOMAGNETIC LINES (absolute total field)

- 500 gammas ————
- 100 gammas ————
- 50 gammas ————
- 10 gammas ————
- 5 gammas ————
- Magnetic Depression ————
- Flight Line ———— A 20 ———— B 40

Flight altitude: 1000 feet above sea-level.  
No correction has been made for regional variation.  
Airborne Magnetic Survey, flown April 1968  
by Survair Ltd., Ottawa.

Decca navigation (Eglington Island Decca Chain, 1968) was used to direct  
the course of the aircraft and to determine its track. Details available  
from Polar Continental Shelf Project, Department of Energy, Mines and  
Resources, Ottawa.

Lambert Conformal Projection—standard parallels 74°02'30" and 77°12'30".

GEOPHYSICS PAPER 5407  
**POLAR CONTINENTAL SHELF**  
NORTHWEST TERRITORIES  
SHEET 98 <sup>G</sup>/<sub>NW</sub>