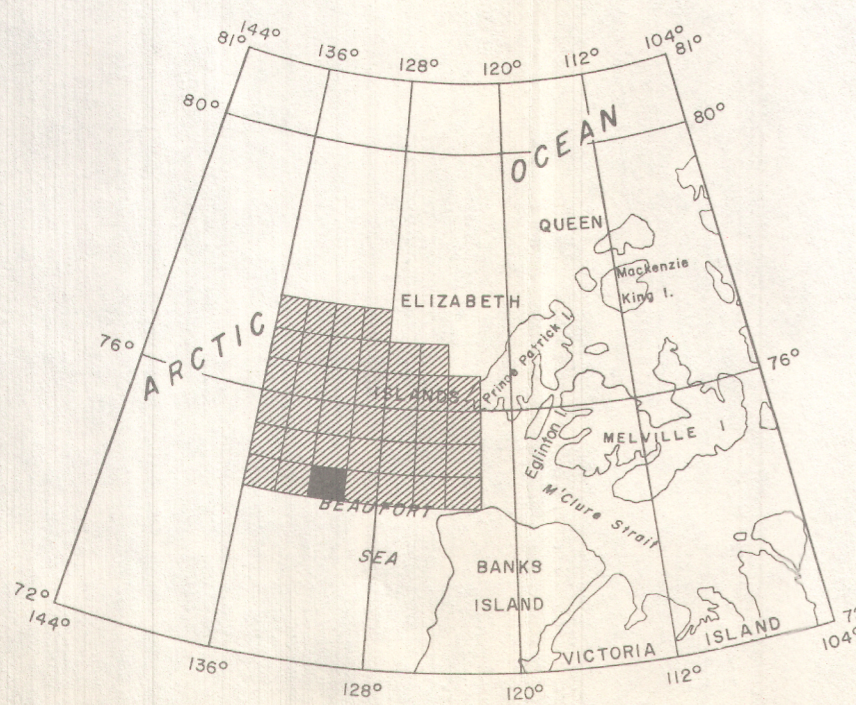
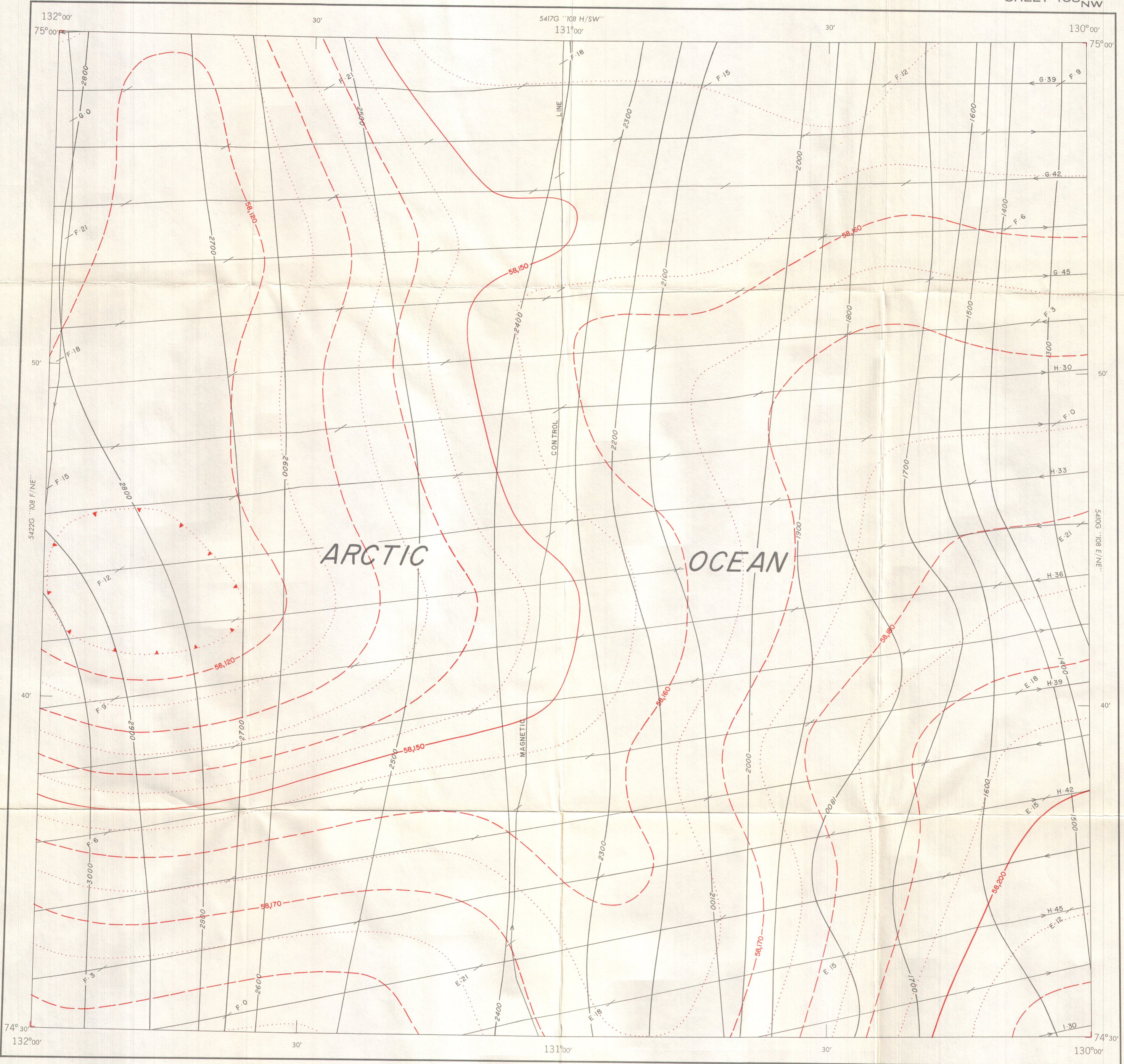


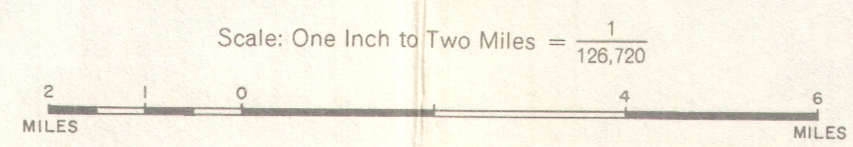
GEOLOGICAL SURVEY OF CANADA
DEPARTMENT OF ENERGY, MINES AND RESOURCES

AEROMAGNETIC SERIES

SHEET 108 ^E/_{NW}



MAP 5416G
POLAR CONTINENTAL SHELF
SHEET 108 ^E/_{NW}
DISTRICT OF FRANKLIN
NORTHWEST TERRITORIES



COPIES OF THIS MAP MAY BE OBTAINED FROM THE DIRECTOR, GEOLOGICAL SURVEY OF CANADA, OTTAWA.

ISOMAGNETIC LINES (absolute total field)
500 gammas
100 gammas
50 gammas
10 gammas
5 gammas
Magnetic Depression
Flight Line A 20 B 40

Flight altitude: 1000 feet above sea-level.
No correction has been made for regional variation.
Airborne Magnetic Survey,
by Survair Ltd., Ottawa.

Decca navigation (Eglinton Island Decca Chain, 1968) was used to direct the course of the aircraft and to determine its track. Details available from Polar Continental Shelf Project, Department of Energy, Mines and Resources, Ottawa.
Lambert Conformal Projection—standard parallels 74°02'30" and 77°12'30".
GEOPHYSICS PAPER 5416
POLAR CONTINENTAL SHELF
NORTHWEST TERRITORIES
SHEET 108 ^E/_{NW}

PUBLISHED 1968