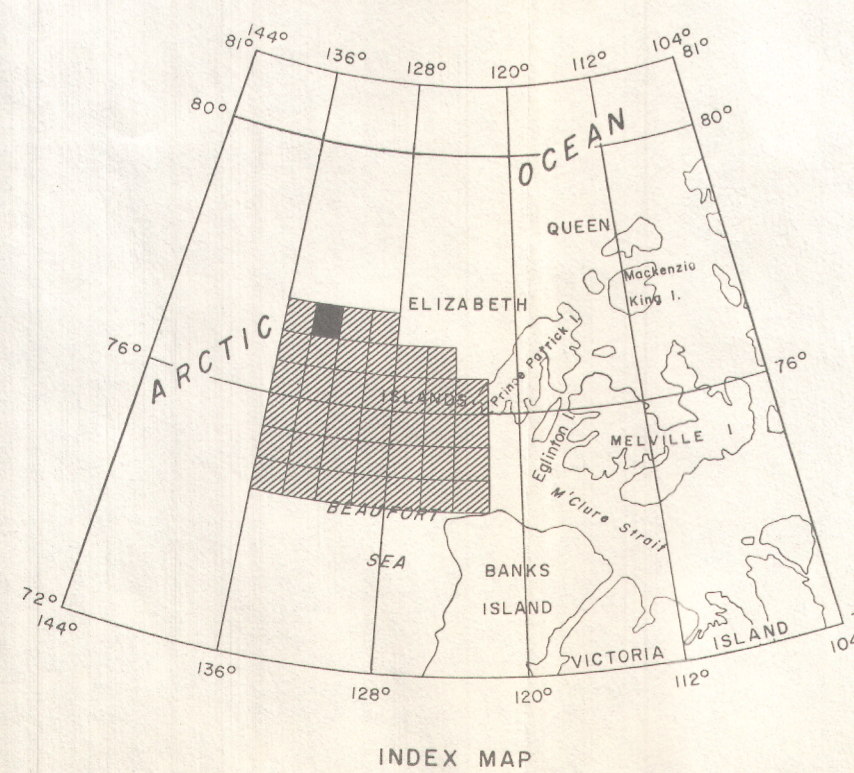
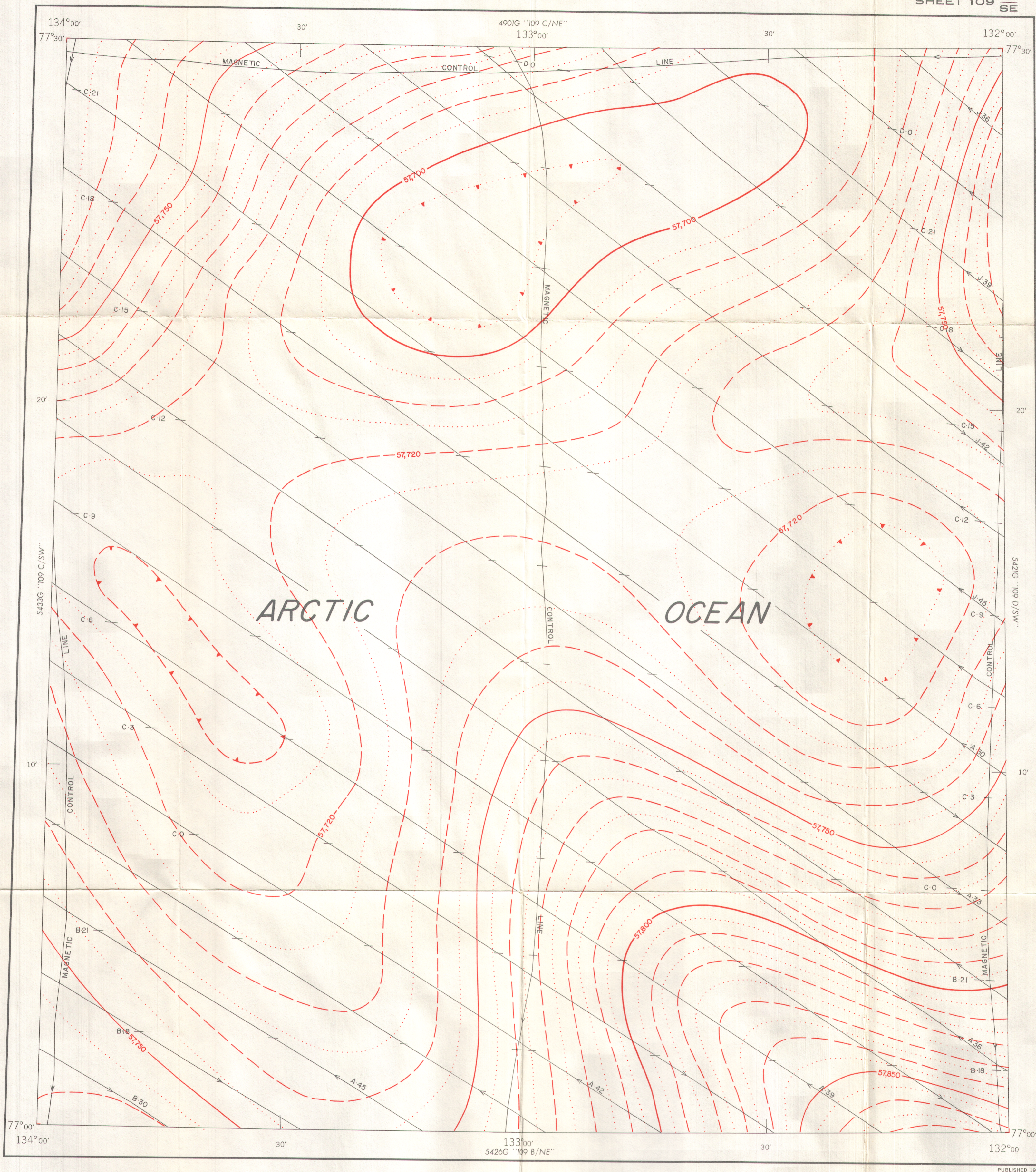


AEROMAGNETIC SERIES

GEOLOGICAL SURVEY OF CANADA
DEPARTMENT OF ENERGY, MINES AND RESOURCES

SHEET 109 ^C/_{SE}

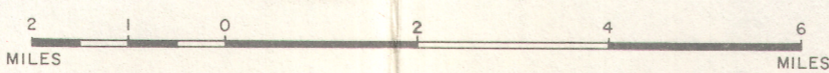


MAP 5427G

POLAR CONTINENTAL SHELF
SHEET 109 ^C/_{SE}

DISTRICT OF FRANKLIN
NORTHWEST TERRITORIES

Scale: One Inch to Two Miles = $\frac{1}{126,720}$



COPIES OF THIS MAP MAY BE OBTAINED FROM THE
DIRECTOR, GEOLOGICAL SURVEY OF CANADA, OTTAWA.

ISOMAGNETIC LINES (absolute total field)

- 500 gammas
- 100 gammas
- 50 gammas
- 10 gammas
- 5 gammas
- Magnetic Depression
- Flight Line A 20 B 40

Flight altitude: 1000 feet above sea-level.
No correction has been made for regional variation.
Airborne Magnetic Survey, flown April 1968
by Survoir Ltd., Ottawa.

Decca navigation (Eglinton Island Decca Chain, 1968) was used to direct
the course of the aircraft and to determine its track. Details available
from Polar Continental Shelf Project, Department of Energy, Mines and
Resources, Ottawa.

Lambert Conformal Projection—standard parallels 74°02'30" and 77°12'30".

GEOPHYSICS PAPER 5427
POLAR CONTINENTAL SHELF
NORTHWEST TERRITORIES
SHEET 109 ^C/_{SE}