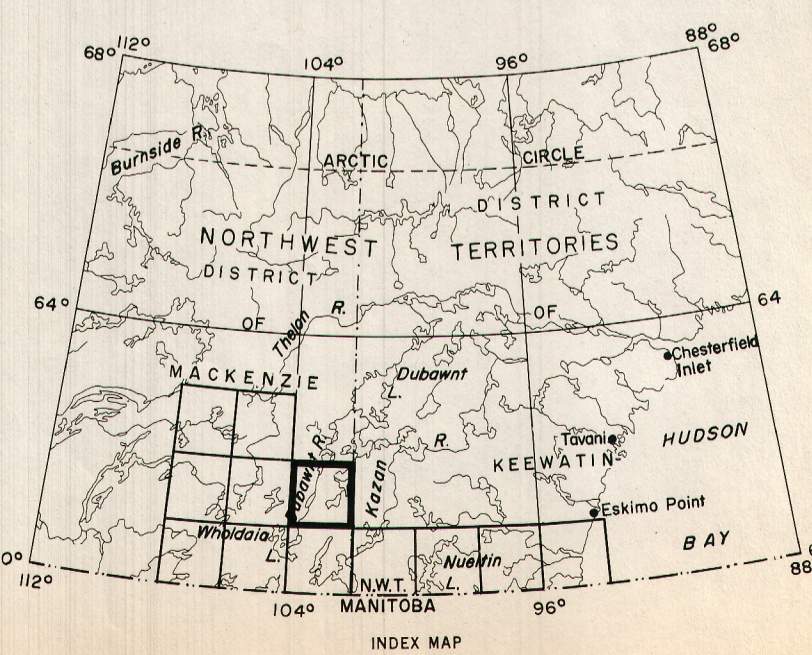


GEOLOGICAL SURVEY OF CANADA
DEPARTMENT OF ENERGY, MINES AND RESOURCES

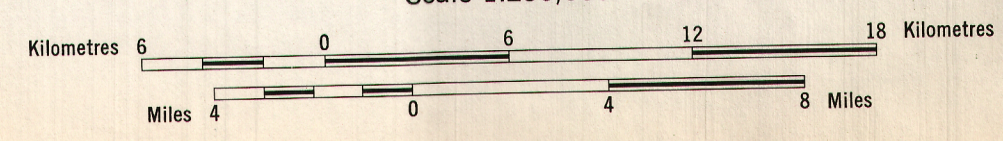
SHEET 65/E

AEROMAGNETIC SERIES



MAP 7180G
BOYD LAKE
DISTRICT OF MACKENZIE
NORTHWEST TERRITORIES

Scale 1:250,000



No correction has been made for regional variation.
Flight altitude 1000 ft. above ground level.

Airborne Magnetic Survey, July to October 1954, by
Geological Survey of Canada.

GEOPHYSICS PAPER 7180
BOYD LAKE
NORTHWEST TERRITORIES
SHEET 65/E