

AEROMAGNETIC SERIES

64G

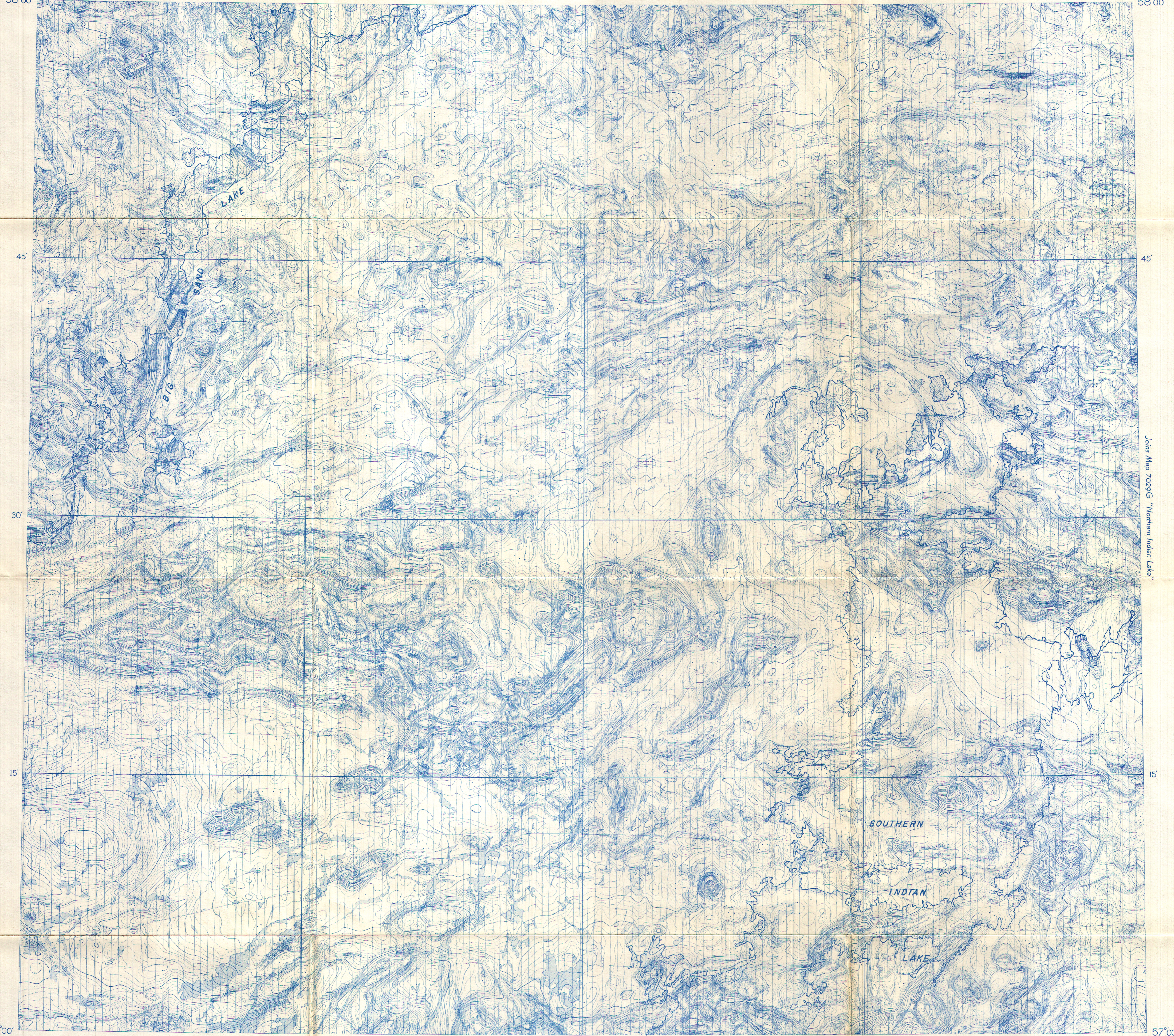
100°00'
58°00'

30'

99°00'

30'

98°00'
58°00'



Joins Map 7026G "Northern Indian Lake"

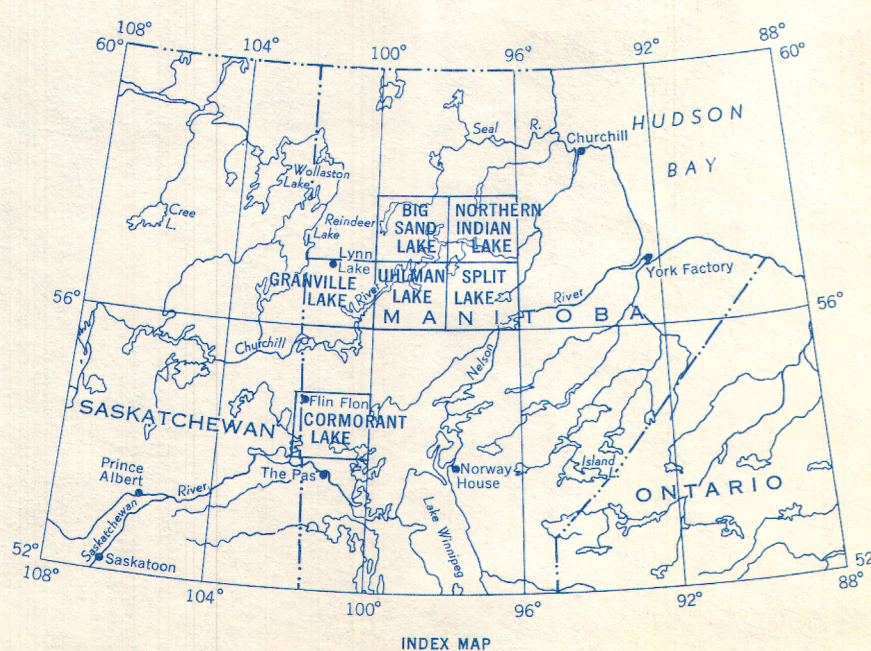
Joins Map 7026G "Uhlman Lake"

57°00'
100°00'

30'

30'

57°00'
98°00'



MAP 7028 G
BIG SAND LAKE
MANITOBA

Scale: One Inch to Four Miles = $\frac{1}{253,440}$
Miles
4 2 0 4 8 12

Airborne Magnetic Survey, May 1962 to September 1962 by Canadian Aero Service Ltd. Four mile map compiled from one inch to one mile Geophysical maps published by the Department of Mines and Technical Surveys and the Province of Manitoba Department of Natural Resources.

No correction has been made for regional variation

GEOPHYSICS PAPER 7028
BIG SAND LAKE
MANITOBA
SHEET 64G