

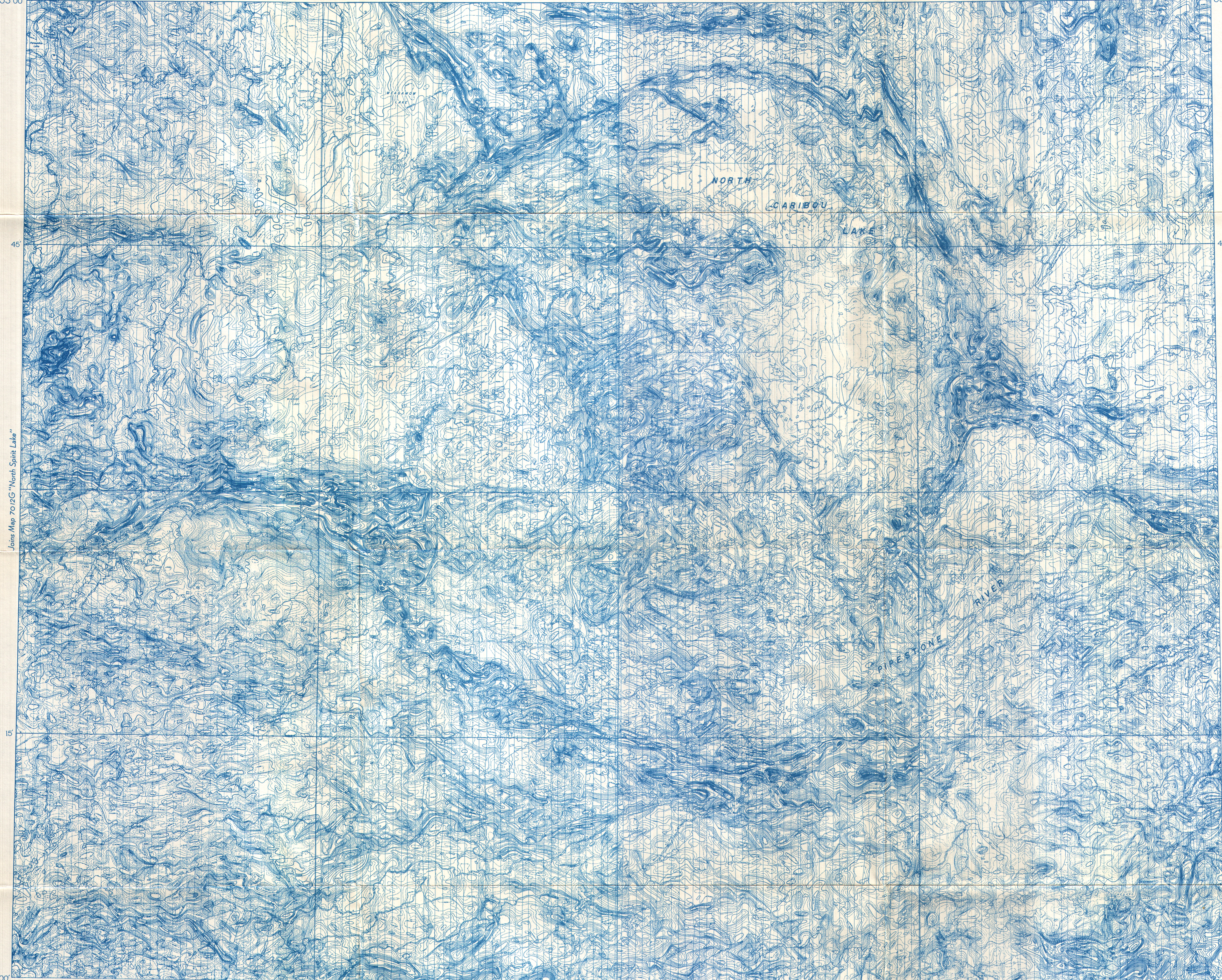
92° 00'
53° 00'

30'

91° 00'

30'

90° 00'
53° 00'



Joins Map 7012G "North Spirit Lake"

Joins Map 7010G "Winnamin Lake"

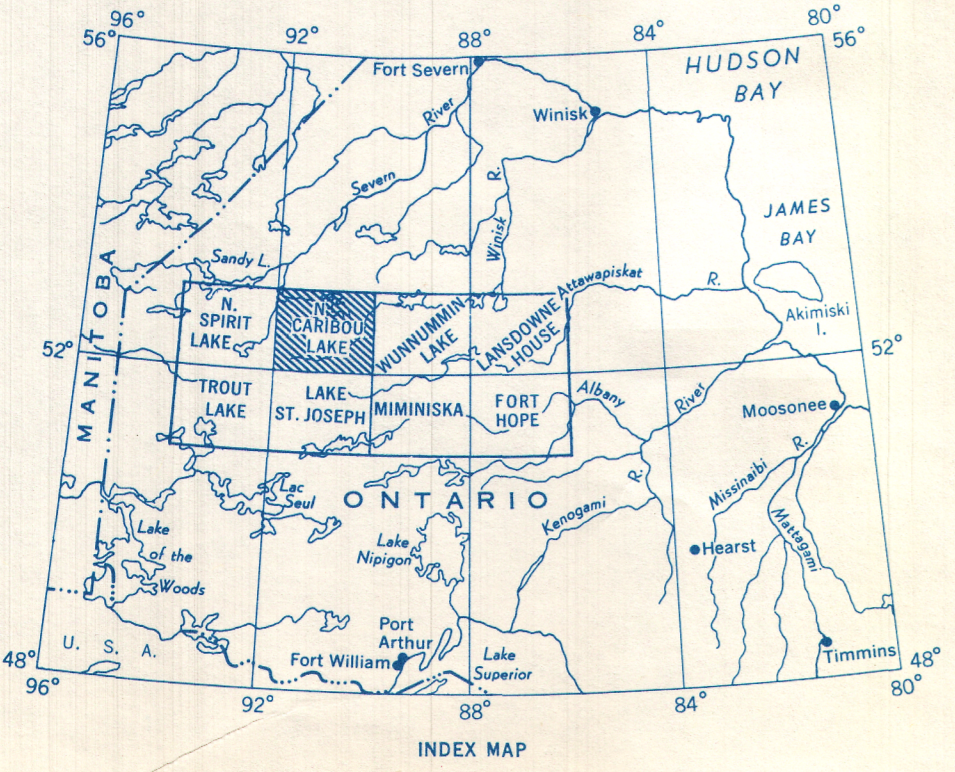
52° 00'
92° 00'

30'

91° 00'

30'

90° 00'
52° 00'



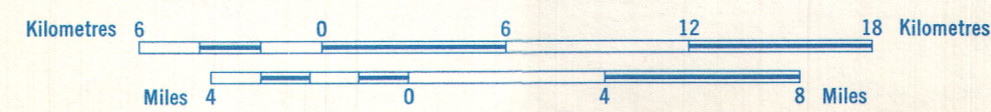
INDEX MAP

Joins Map 7010G "Lake St. Joseph"

PUBLISHED, 1963

MAP 7013G
NORTH CARIBOU LAKE
ONTARIO

Scale 1:250,000



Universal Transverse Mercator Projection
© Crown Copyrights reserved

Airborne Magnetic Survey, May 1959 to March 1960, by Spartan Air Services Ltd., four mile map compiled from one inch to one mile geophysical maps published by the Department of Mines and Technical Surveys and the Province of Ontario Department of Mines.

No correction has been made for regional variation