

83°00'

55'

50'

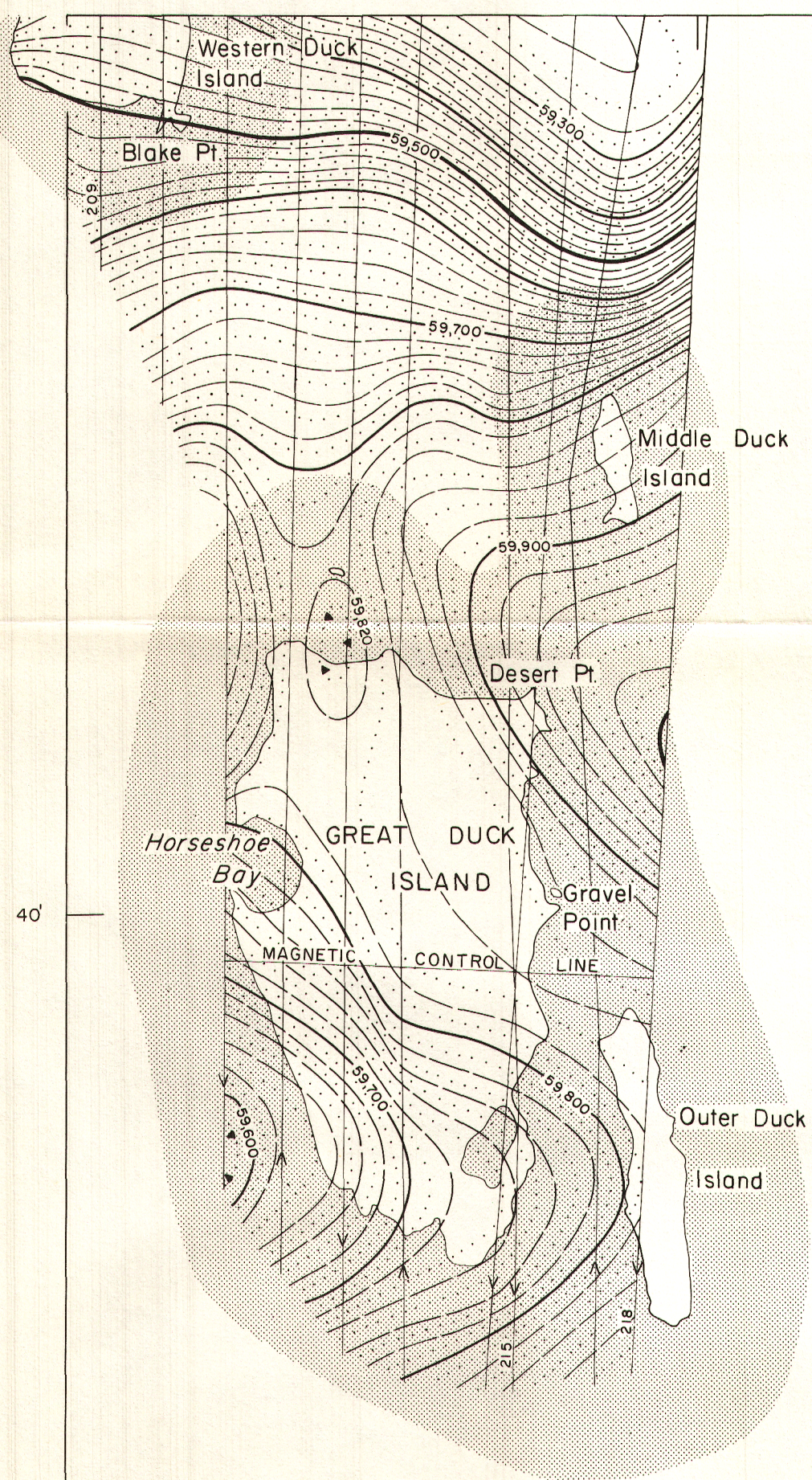
Joins Map 2239G, "Silver Water"

40'

35'

82°30'

45°45'



L A K E      H U R O N

U. S. A.

Joins Map 2236G, "Providence Bay"

35'

82°30'

PUBLISHED 1963

MAP 3240 G

## GREAT DUCK ISLAND

MANITOULIN DISTRICT  
ONTARIOScale: One Inch to One Mile =  $\frac{1}{63,360}$   
Miles

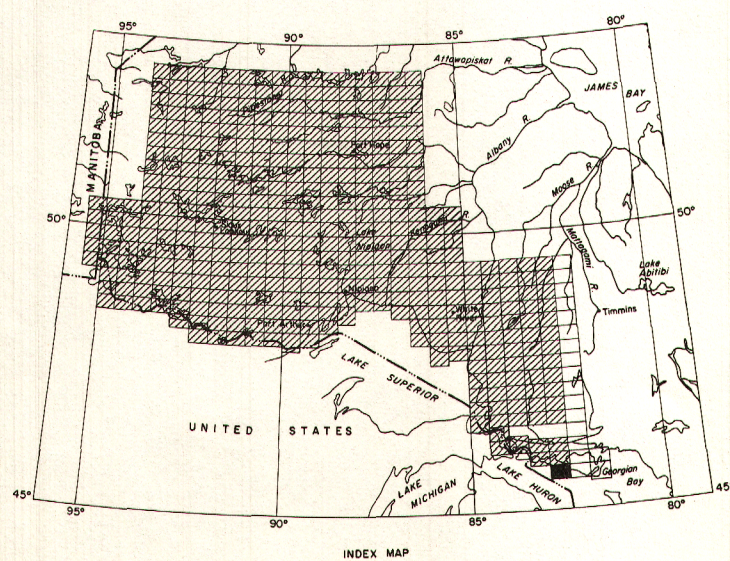
1 1/2 0 1 2 3

Airborne Magnetic Survey, October 1962 to May 1963  
by Spartan Air Services Ltd.

No correction has been made for regional variation.

The planimetry for this map was obtained from  
topographical map sheets published by the  
Department of Mines and Technical Surveys and  
the Ontario Department of Lands and Forests.

The magnetic data on this map were compiled from information recorded along the flight lines shown. The anomalies expressed by the magnetic contours are dependent on the variable magnetic intensities of the underlying rocks, and may be due to conditions near, or at unknown depths below the surface. High magnetic anomalies normally indicate the presence of basic rocks, such as diabase, gabbro, or serpentine, which have a relatively high iron content, but in special instances may be due, or partly due, to concentrations of magnetic ore minerals. By means of the magnetic anomalies, various rock bodies or structural features, such as faults or folds, may be traced into, or across, areas of few or no outcrops. In many instances, however, no interpretation of particular anomalies may be possible without further geological information.

GEOPHYSICS PAPER 3240  
GREAT DUCK ISLAND  
ONTARIO  
SHEET 41<sup>G</sup><sub>10</sub>

ISOMAGNETIC LINES (absolute total field)

500 gammas .....  
100 gammas .....  
20 gammas .....  
10 gammas .....  
Magnetic depression .....Flight lines .....  
Flight altitude 1000 feet above ground level