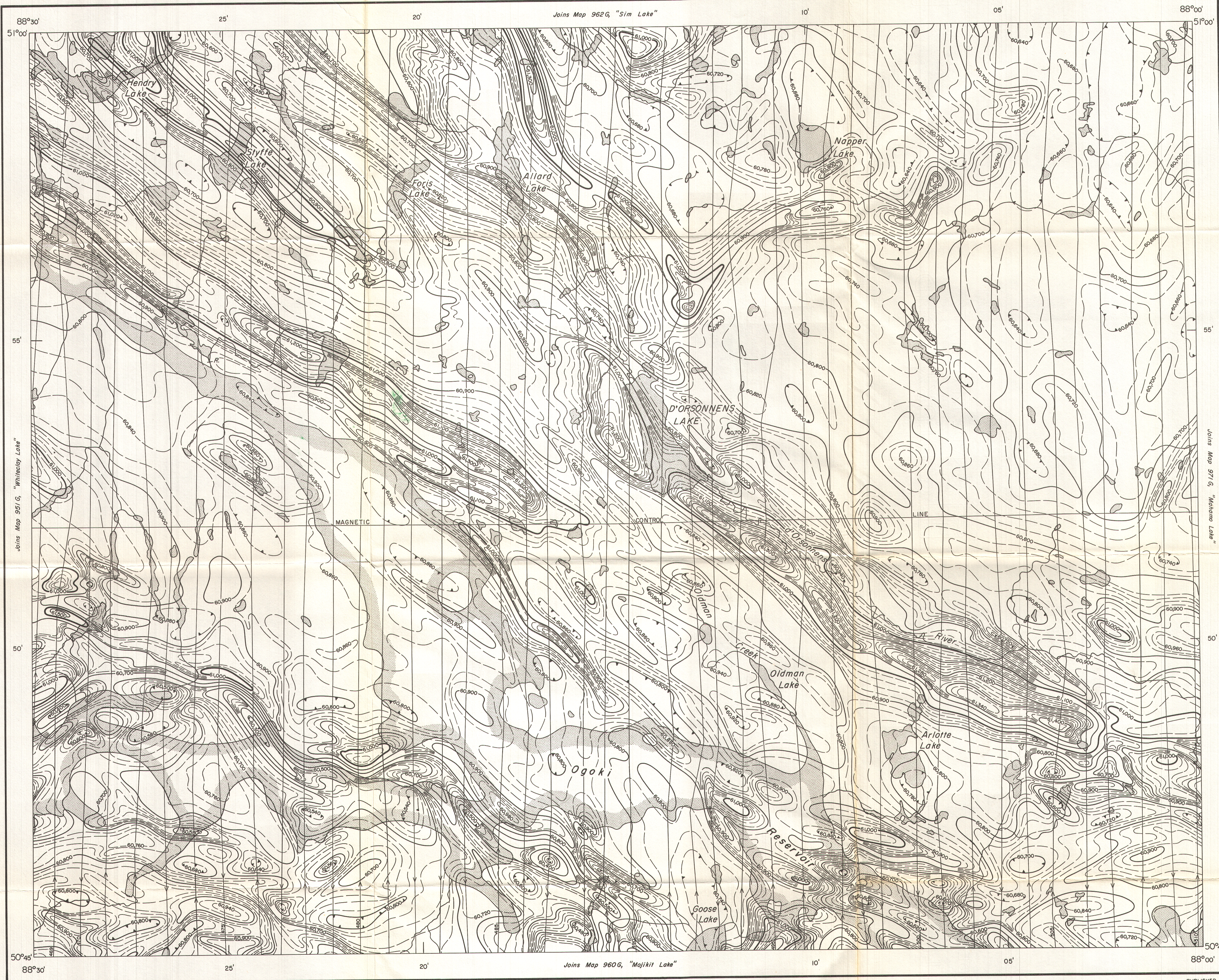


AEROMAGNETIC SERIES



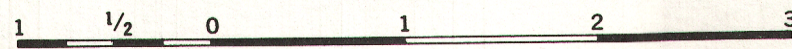
PUBLISHED, 1960

MAP 961 G

D'ORSONNENS LAKE

THUNDER BAY DISTRICT
ONTARIO

Scale: One Inch to One Mile = $\frac{1}{63,360}$
Miles



Air photographs covering this map-area may be obtained through the National Air Photographic Library, Topographical Surveys, Ottawa, Ontario.

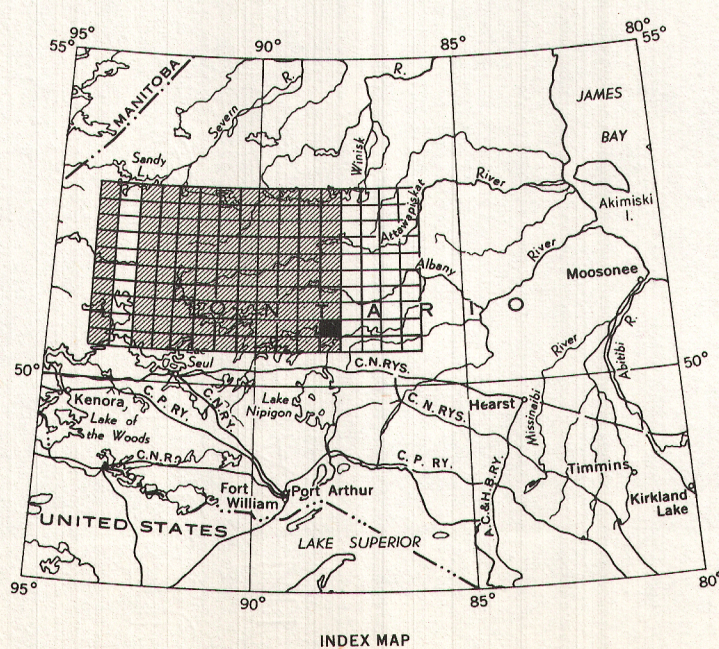
Airborne Magnetic Survey, May, 1959 to March, 1960, by Spartan Air Services Ltd.

No correction has been made for regional variation.

The planimetry for this map was obtained from the topographical map sheet published at a scale of one inch to four miles.

The magnetic data on this map were compiled from information recorded along the flight lines shown. The anomalies expressed by the magnetic contours are dependent on the variable magnetic intensities of the underlying rocks, and may be due to conditions near, or at unknown depths below, the surface. High magnetic anomalies normally indicate the presence of basic rocks, such as diabase, gabbro, or serpentine, which have a relatively high iron content; but in special instances may be due, or partly due, to concentrations of magnetic ore minerals. By means of the magnetic anomalies, various rock bodies or structural features, such as faults or folds, may be traced by the geologist into, or across, areas of few or no outcrops. In many instances, however, no interpretation of particular anomalies may be possible without further geological information.

GEOPHYSICS PAPER 961
D'ORSONNENS LAKE
ONTARIO
SHEET 52 $\frac{1}{16}$



INDEX MAP

ISOMAGNETIC LINES (absolute total field)

- 1000 gammas
- 100 gammas
- 20 gammas
- 10 gammas
- Magnetic depression

- Flight lines
- Flight altitude: 500 feet above ground level.