

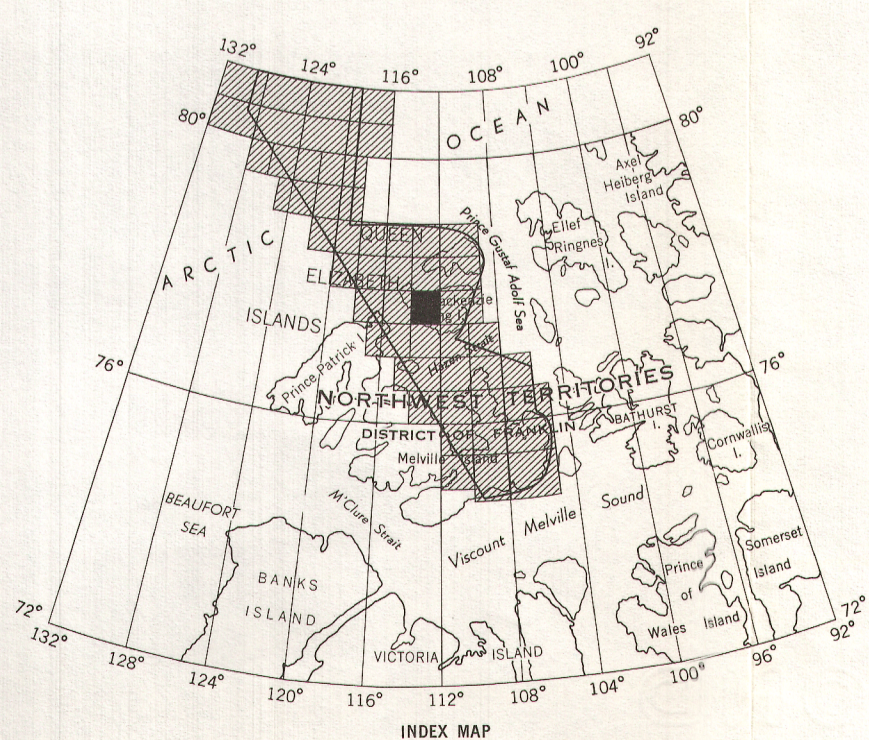
Joins Map 3435 G, 89 NW

Joins Map 3432 G, 89 SE

Joins Map 3437 G, 89 NW

Joins Map 3439 G, 89 SE

PUBLISHED, 1965



MAP 3436G  
**POLAR CONTINENTAL SHELF PROJECT**  
DISTRICT OF FRANKLIN  
SHEET 89 <sup>D</sup>/<sub>NE</sub>

Scale: One inch to Two Miles =  $\frac{1}{126,720}$   
Miles

Airborne Magnetic Survey, April to May 1964 by Canadian Aero Service Ltd., Ottawa.  
No correction has been made for regional variation  
Lambert Conformal Projection-standard parallels 77° 45' and 80° 45'

Base map from information supplied by the Department of Mines and Technical Surveys, Ottawa.

- ISOMAGNETIC LINES (total field):
- 500 gammas . . . . .
  - 100 gammas . . . . .
  - 20 gammas . . . . .
  - 10 gammas . . . . .
  - Magnetic depression . . . . .
  - Flight lines . . . . .
  - Photo position . . . . .
  - Flight altitude: 1000 feet above sea level

DECCA NAVIGATION  
Decca navigation was used in order to direct the course of the aircraft and to determine its track for accurate navigation. For details, see Brock Island Decca Chain, 1963-64, Computing Devices of Canada Limited, Ottawa.

GEOPHYSICS PAPER 3436  
POLAR CONTINENTAL SHELF PROJECT  
DISTRICT OF FRANKLIN  
SHEET 89 <sup>D</sup>/<sub>NE</sub>