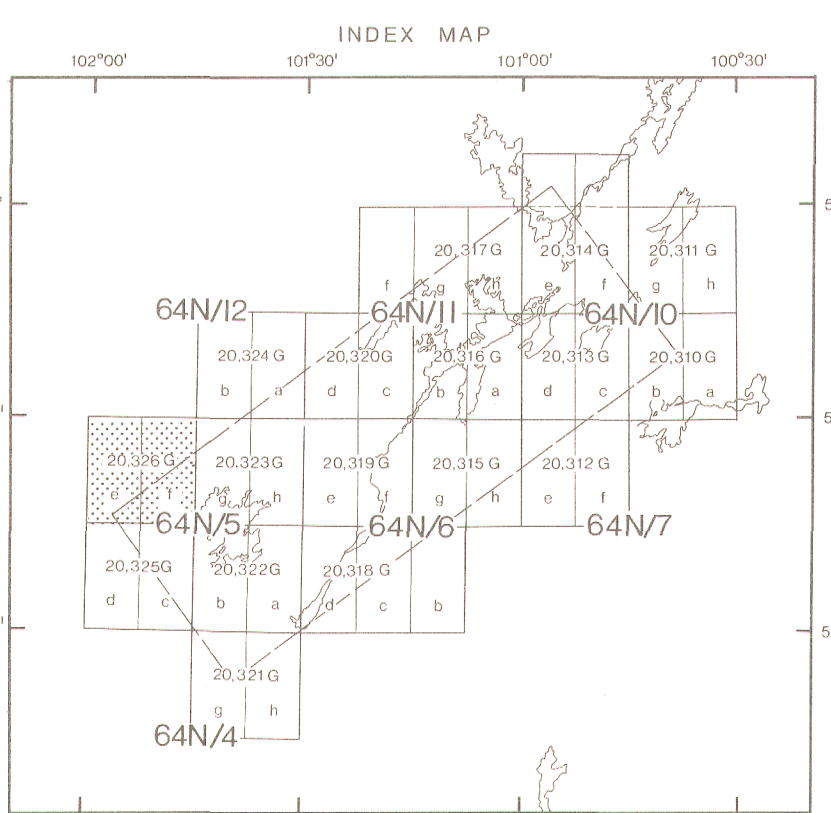
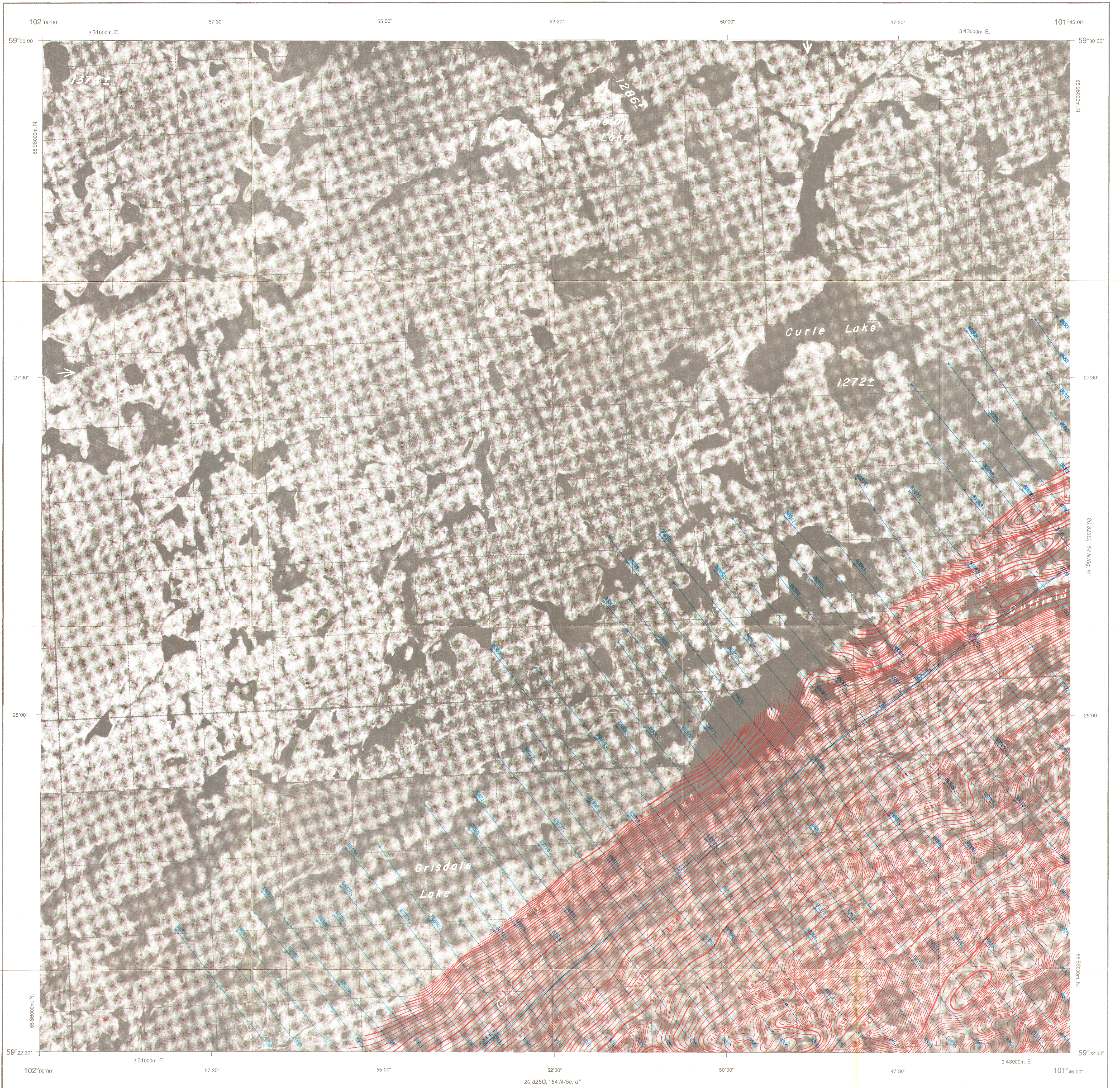


GEOPHYSICAL SERIES
 (HIGH RESOLUTION AEROMAGNETIC TOTAL FIELD)

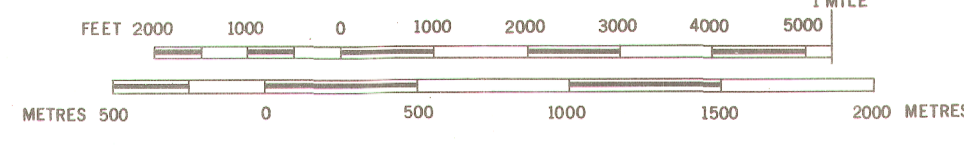


ISOMAGNETIC LINES (absolute total field)

250 gammas.....
 50 gammas.....
 10-20 gammas.....
 2 gammas.....
 (1 gamma = 1 nanotesla in SI units)
 Magnetic depression.....
 Flight lines.....
 Flight altitude: 150m above ground level

MAP 20,326 G
 64 N/5e, f
 MANITOBA

SCALE 1:25,000



PUBLISHED 1979

This map was compiled from digitally-recorded aeromagnetic survey data obtained using an inboard rubidium vapour magnetometer which measured the total field with a resolution of 0.02 gamma. Flight altitude was 150 m above ground at 300 m average flight line spacing. Double control lines were flown at an average spacing of 7.5 kilometers.
 The data was edited, compiled, leveled and gamma values for contouring interpolated on a square grid (0.25 cm grid spacing at published map scale) by computer processes.
 The leveling process employed the two components of the double control line and the short segments of traverse which connected them where they were not exactly coincident. This data was used to minimize and distribute non-geological contributions from the total magnetic field profile along the control line. The corrected control lines were used to level the traverse lines by a method of minimal sum-total adjustment.
 The final data grid was contoured and plotted using the automatic contouring program and digital plotting facilities of Dataplotting Services Ltd., Toronto.
 Airborne survey and digital compilation was carried out by Resource Geophysics and Geochemistry Division, Geological Survey of Canada. The survey operations took place in August and September 1977 using Beechcraft Queenair 65-B00 aircraft CF-WZG.
 No correction has been made for the regional gradient of the earth's magnetic field.
 The base photomap for this map was reproduced from 1:50,000 topographical map sheets, published by the Department of Energy, Mines and Resources, Ottawa.
 The survey data used to compile this map is available in digital form from the Geological Survey of Canada at the cost of retrieval and copying. Copies of this map may be obtained from the Mineral Resources Division, Manitoba Department of Mines, Winnipeg, or from the Geological Survey of Canada, Ottawa.

MAP 20,326 G
 64 N/5e, f
 MANITOBA