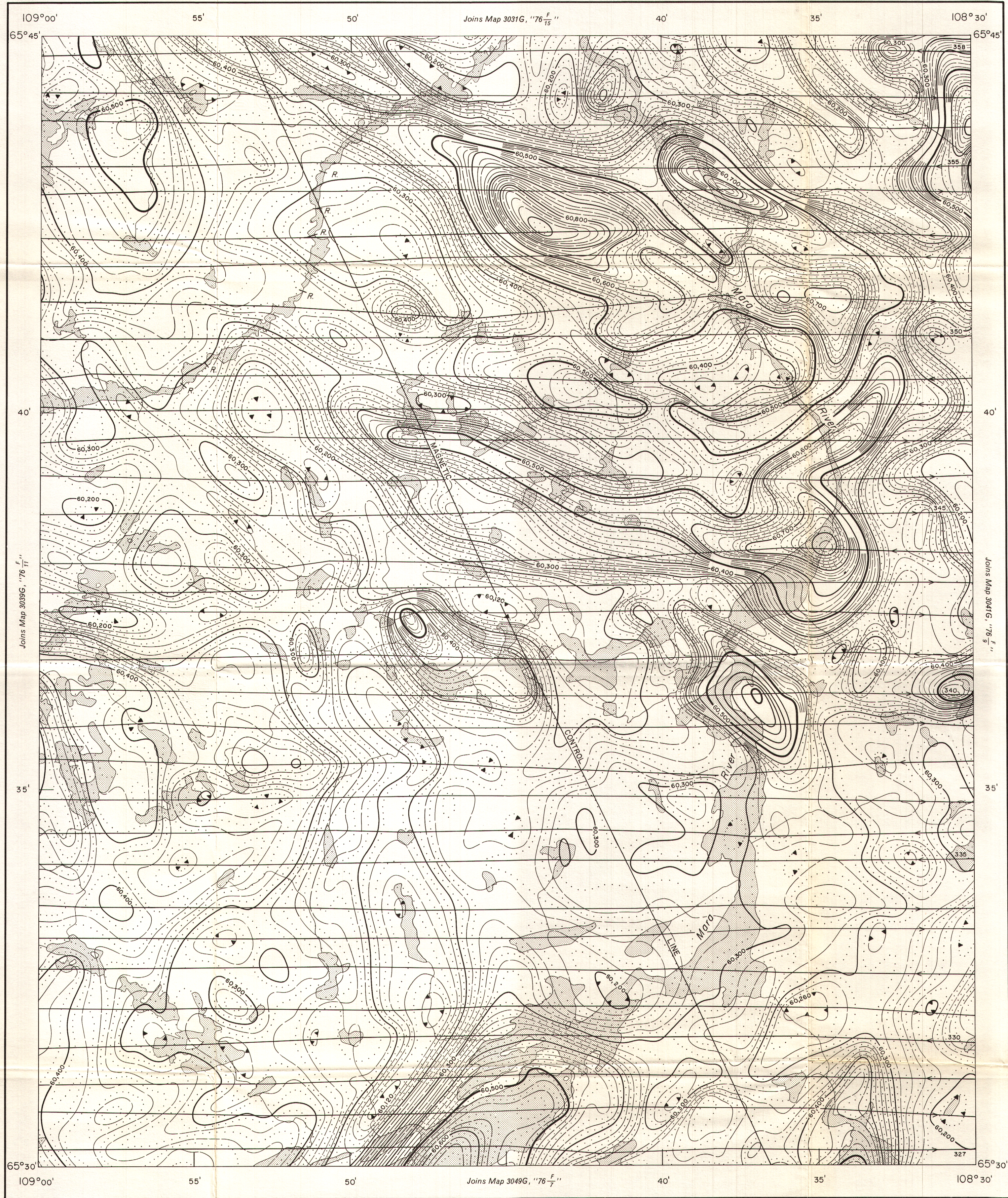


GEOLOGICAL SURVEY OF CANADA
DEPARTMENT OF MINES AND TECHNICAL SURVEYS

AEROMAGNETIC SERIES

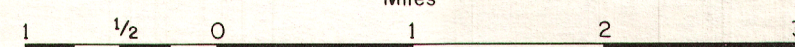
SHEET 76 $\frac{F}{10}$



MAP 3040G

SHEET 76 $\frac{F}{10}$
DISTRICT OF MACKENZIE
NORTHWEST TERRITORIES

Scale: One Inch to One Mile = $\frac{1}{63,360}$
Miles

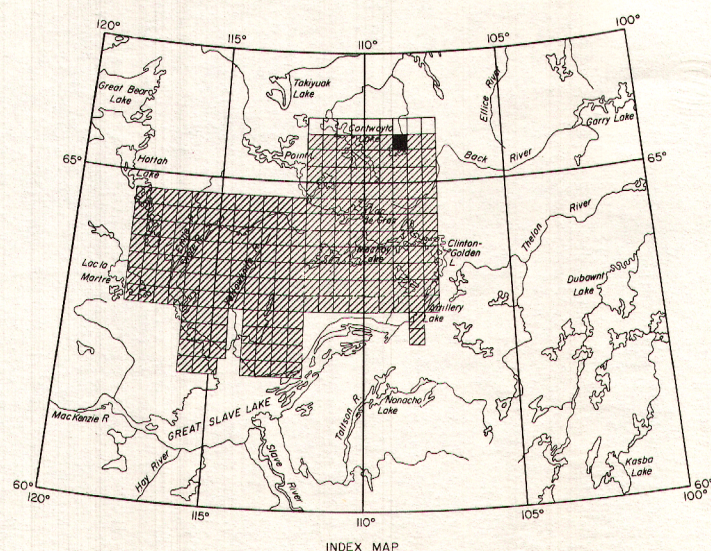


Air photographs covering this map-area may be obtained through the National Air Photographic Library, Topographical Survey, Ottawa, Ontario.

ISOMAGNETIC LINES (absolute total field)

500 gammas
100 gammas
20 gammas
10 gammas
Magnetic depression

Flight lines
Flight altitude 1000 feet above ground level



The magnetic data on this map were compiled from information recorded along the flight lines shown. The anomalies expressed by the magnetic contours are dependent on the variable magnetic intensities of the underlying rocks, and may be due to conditions near, or at unknown depths below the surface. High magnetic anomalies normally indicate the presence of basic rocks, such as diabase, gabbro, or serpentine, which have a relatively high iron content, but in special instances may be due, or partly due, to concentrations of magnetic ore minerals. By means of the magnetic anomalies, various rock bodies or structural features, such as faults or folds, may be traced into, or across, areas of few or no outcrops. In many instances, however, no interpretation of particular anomalies may be possible without further geological information.

GEOPHYSICS PAPER 3040

NORTHWEST TERRITORIES

SHEET 76 $\frac{F}{10}$