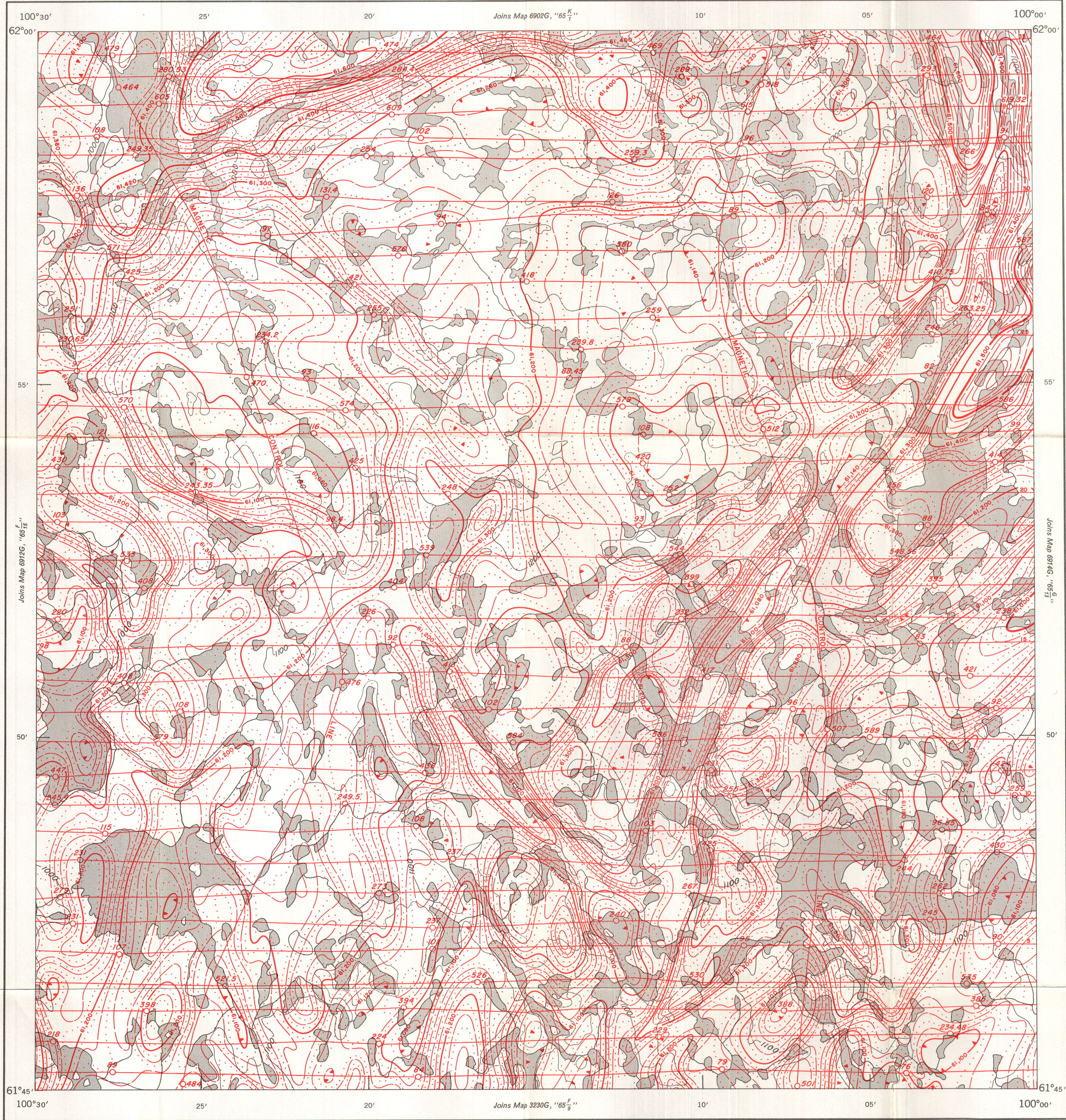


GEOLOGICAL SURVEY OF CANADA
DEPARTMENT OF ENERGY, MINES AND RESOURCES

GEOPHYSICAL SERIES (AEROMAGNETIC)

SHEET 65^F₁₆



MAP 6913 G

SHEET 65^F₁₆

DISTRICT OF KEEWATIN
NORTHWEST TERRITORIES

Scale: One Inch to One Mile = $\frac{1}{63,360}$

Air photographs covering this map-area may be obtained through the National Air
Photographic Library, Topographical Survey, Ottawa, Ontario.

COPIES OF THIS MAP MAY BE OBTAINED FROM THE
DIRECTOR, GEOLOGICAL SURVEY OF CANADA, OTTAWA.

Airborne Magnetic Survey, July 1969 to Sept. 1970
by Spartan Aero Limited.

No correction has been made for regional variation.

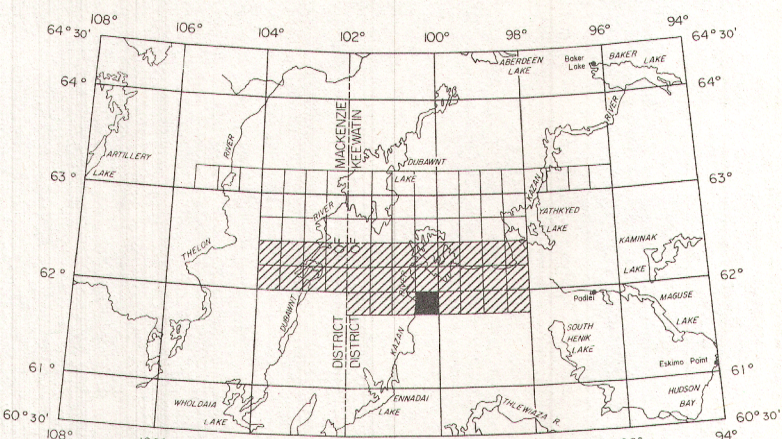
The topography for this map was reproduced from
1:250,000 topographical map sheets, published by the
Department of Energy, Mines and Resources, Ottawa.

The magnetic data on this map were compiled from information
recorded along the flight lines shown. The anomalies expressed by the
magnetic contours are dependent on the variable magnetic intensities of
the underlying rocks, and may be due to conditions near, or at unknown
depths below the surface. High magnetic anomalies normally indicate
the presence of basic rocks, such as diabase, gabbro, or serpentinite, which
have a relatively high iron content, but in special instances may be due,
or partly due, to concentrations of magnetic minerals. By means of
the magnetic anomalies, various rock bodies or structural features, such
as faults or folds, may be traced into, or across, areas of few or no out-
crops. In many instances, however, no interpretation of particular anom-
alies may be possible without further geological information.

MAP 6913

NORTHWEST TERRITORIES

SHEET 65^F₁₆



INDEX MAP