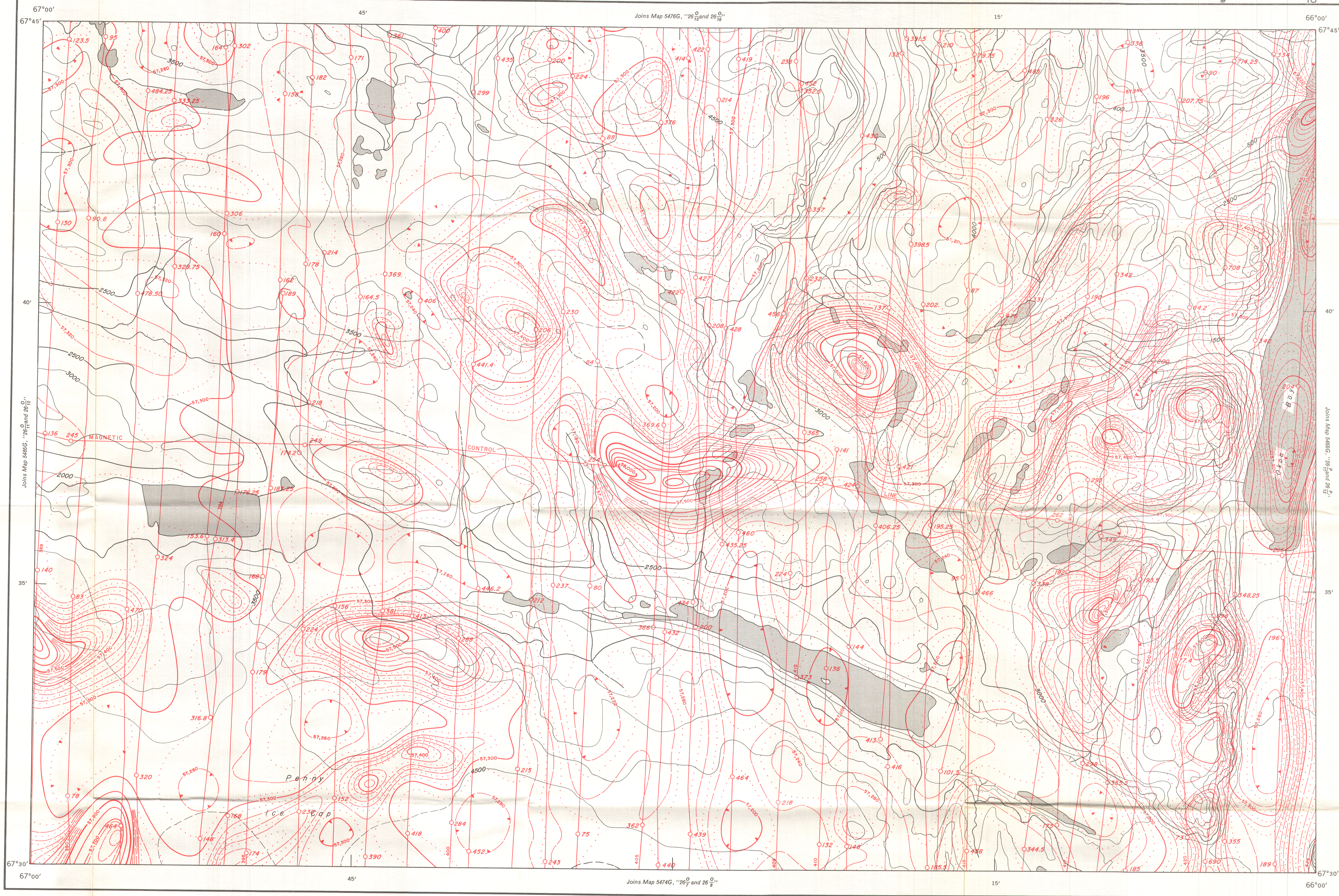


GEOLOGICAL SURVEY OF CANADA  
DEPARTMENT OF ENERGY, MINES AND RESOURCES

GEOPHYSICAL SERIES (AEROMAGNETIC)

SHEET 26<sup>0</sup>/<sub>9</sub> AND SHEET 26<sup>0</sup>/<sub>10</sub>



MAP 5475 G

SHEET 26<sup>0</sup>/<sub>9</sub> AND 26<sup>0</sup>/<sub>10</sub>

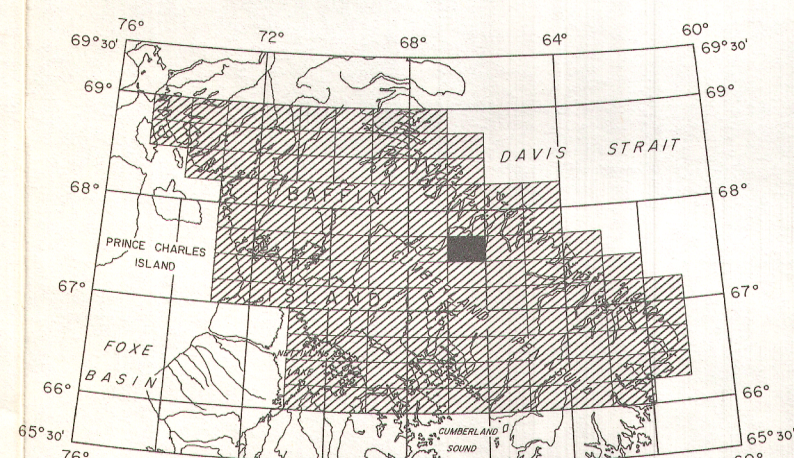
BAFFIN ISLAND  
DISTRICT OF FRANKLIN

Scale: One Inch to One Mile =  $\frac{1}{63,360}$

1 1/2 0 1 2 3  
Mile Miles

Air photographs covering this map-area may be obtained through the National Air Photographic Library, Topographical Survey, Ottawa, Ontario.

COPIES OF THIS MAP MAY BE OBTAINED FROM THE  
DIRECTOR, GEOLOGICAL SURVEY OF CANADA, OTTAWA.



INDEX MAP

ISOMAGNETIC LINES (absolute total field)

500 gammas .....  
100 gammas .....  
20 gammas .....  
10 gammas .....  
Magnetic depression .....  
Flight lines .....  
Flight altitude 1000 feet above ground level

Airborne Magnetic Survey, April 1969 to Aug. 1971  
by Spartan Aero Limited.

No correction has been made for regional variation.

The topography for this map was reproduced from  
1:250,000 topographical map sheets, published by the  
Department of Energy, Mines and Resources, Ottawa.

Doppler navigation was utilized to direct the course of the  
aircraft and the Doppler output was recorded on an  
incremental X, Y recorder for compilation purposes.

The magnetic data on this map were compiled from information  
recorded along the flight lines shown. The anomalies expressed by the  
magnetic contours are dependent on the variable magnetic intensities of  
the underlying rocks, and may be due to conditions near, or at unknown  
depths below the surface. High magnetic anomalies normally indicate the  
presence of basic rocks, such as diabase, gabbro, or serpentinite, which  
have a relatively high iron content, but in special instances may be due,  
or partly due, to concentrations of magnetic minerals. By means of  
the magnetic anomalies, various rock bodies or structural features, such  
as faults or folds, may be traced into, or across, areas of few or no out-  
crops. In many instances, however, no interpretation of particular an-  
omalies may be possible without further geological information.

MAP 5475 G

BAFFIN ISLAND  
SHEET 26<sup>0</sup>/<sub>9</sub> AND 26<sup>0</sup>/<sub>10</sub>

PUBLISHED 1972