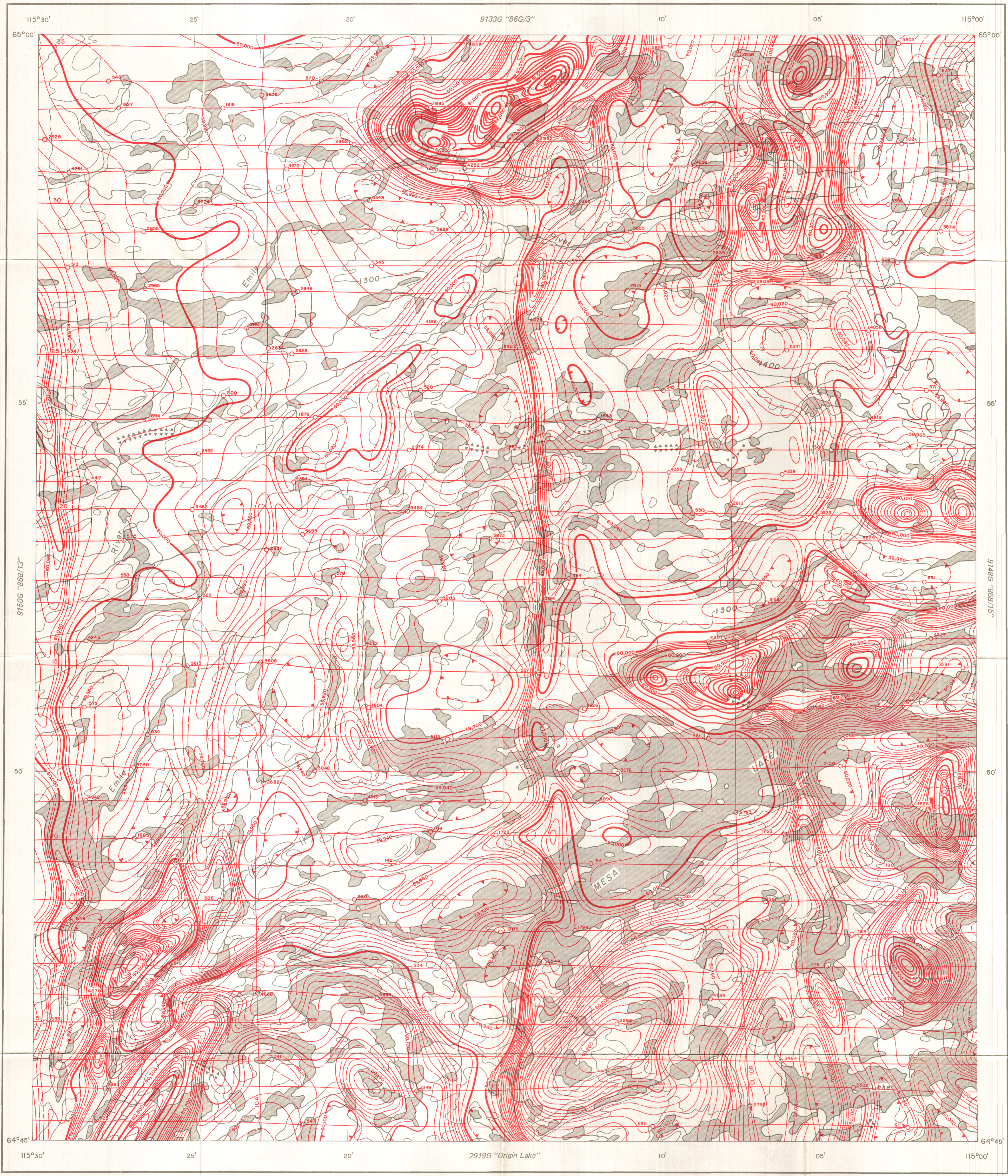


GEOLOGICAL SURVEY OF CANADA
DEPARTMENT OF ENERGY, MINES AND RESOURCES

GEOPHYSICAL SERIES (Aeromagnetic)

SHEET 86 B
14

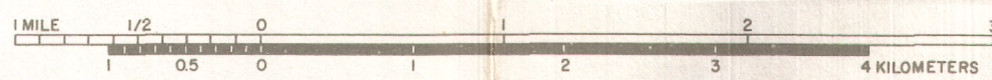


Published 1979

MAP 9149G

MESA LAKE DISTRICT OF MACKENZIE NORTHWEST TERRITORIES

SCALE 1:50,000



Air photographs covering this map area may be obtained through the National Air Photographic Library, Topographical Survey, Ottawa, Ontario.

COPIES OF THIS MAP MAY BE OBTAINED FROM THE DIRECTOR-GENERAL
GEOLOGICAL SURVEY OF CANADA, OTTAWA.

Airborne magnetic survey, July and August 1977
by Geotrex Ltd. and Northway Survey Corporation Ltd.

No correction has been made for regional variation.

The topography for this map was reproduced from
1:250,000 topographical map sheets published by the
Department of Energy, Mines and Resources, Ottawa.

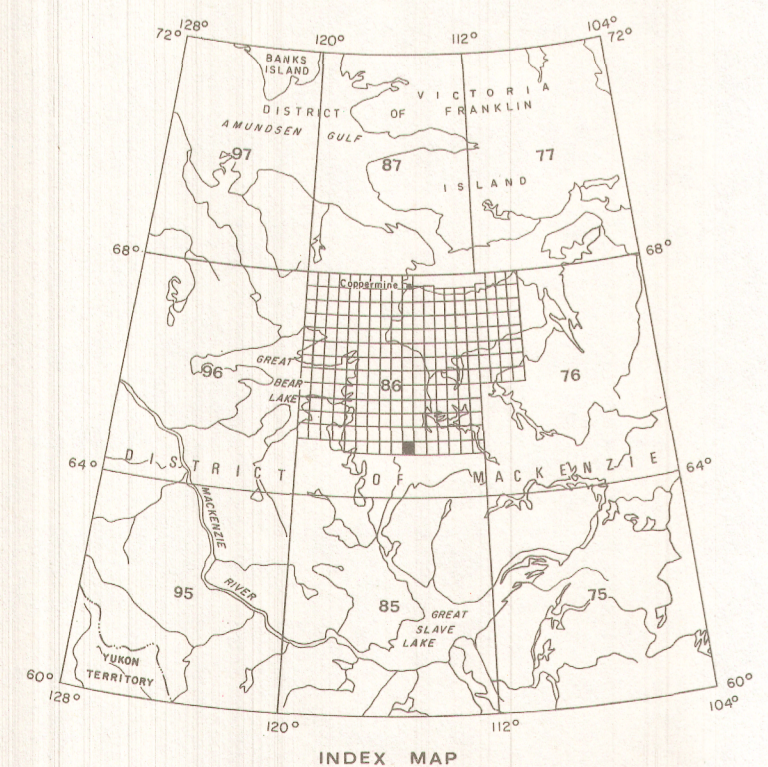
The magnetic data on this map were compiled from information recorded along the flight lines shown. The anomalies expressed by the magnetic contours are dependent on the variable magnetic intensities of the underlying rocks, and may be due to conditions near, or at unknown depths below the surface. High magnetic anomalies normally indicate the presence of basic rocks, such as diabase, gabbro, or serpentinite, which have a relatively high iron content, but in special instances may be due, or partly due, to concentrations of magnetic minerals. By means of the magnetic anomalies, various rock bodies or structural features, such as faults or folds, may be traced into, or across, areas of few or no outcrops. In many instances, however, no interpretation of particular anomalies may be possible without further geological information.

MAP 9149G
MESA LAKE
NORTHWEST TERRITORIES
SHEET 86 B
14

ISOMAGNETIC LINES (absolute total field)

- 500 gammas
- 100 gammas
- 20 gammas
- 10 gammas
- Magnetic depression
- Flight lines
- Flight altitude 300 metres above ground level
- 1 gamma = 10⁻⁹ tesla in SI units

15 987



INDEX MAP