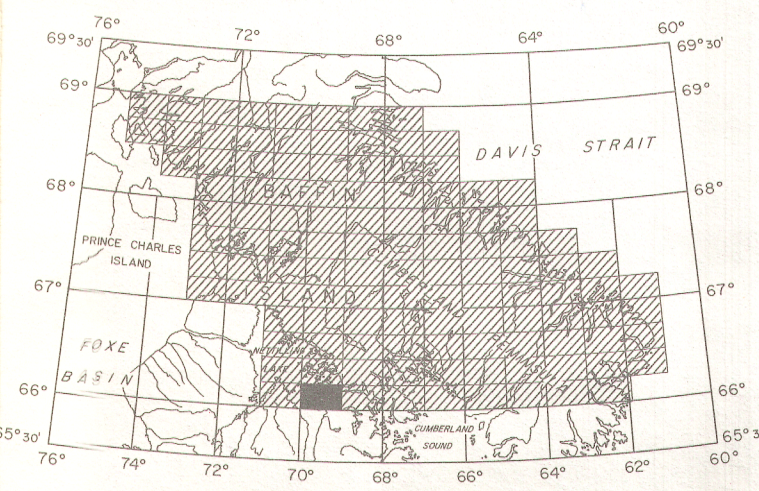


Joins Map 5516G, "26^K₁ and 26^K₂"

Joins Map 5505G, "26^K₃ and 26^K₄"



INDEX MAP

- ISOMAGNETIC LINES (absolute total field)
- 500 gammas
- 100 gammas
- 20 gammas
- 10 gammas
- Magnetic depression
- Flight lines
- Flight altitude 1000 feet above ground level

SHEET 26^K₃ AND 26^K₄

BAFFIN ISLAND DISTRICT OF FRANKLIN

Scale: One Inch to One Mile = $\frac{1}{63,360}$

Mile 1/2 0 1 2 3 Miles

Air photographs covering this map-area may be obtained through the National Air Photographic Library, Topographical Survey, Ottawa, Ontario.
COPIES OF THIS MAP MAY BE OBTAINED FROM THE DIRECTOR, GEOLOGICAL SURVEY OF CANADA, OTTAWA.

Airborne Magnetic Survey, April 1969 to Aug. 1971 by Spartan Aero Limited.

No correction has been made for regional variation.

The topography for this map was reproduced from 1:250,000 topographical map sheets, published by the Department of Energy, Mines and Resources, Ottawa.

Doppler navigation was utilized to direct the course of the aircraft and the Doppler output was recorded on an incremental X, Y recorder for compilation purposes.

The magnetic data on this map were compiled from information recorded along the flight lines shown. The anomalies expressed by the magnetic contours are dependent on the variable magnetic intensities of the underlying rocks, and may be due to conditions near, or at unknown depths below the surface. High magnetic anomalies normally indicate the presence of basic rocks, such as diabase, gabbro, or serpentinite, which have a relatively high iron content, but in special instances may be due, or partly due, to concentrations of magnetic minerals. By means of the magnetic anomalies, various rock bodies or structural features, such as faults or folds, may be traced into, or across, areas of low or no outcrops. In many instances, however, no interpretation of particular anomalies may be possible without further geological information.

MAP 5504 G
BAFFIN ISLAND
SHEET 26^K₃ AND 26^K₄