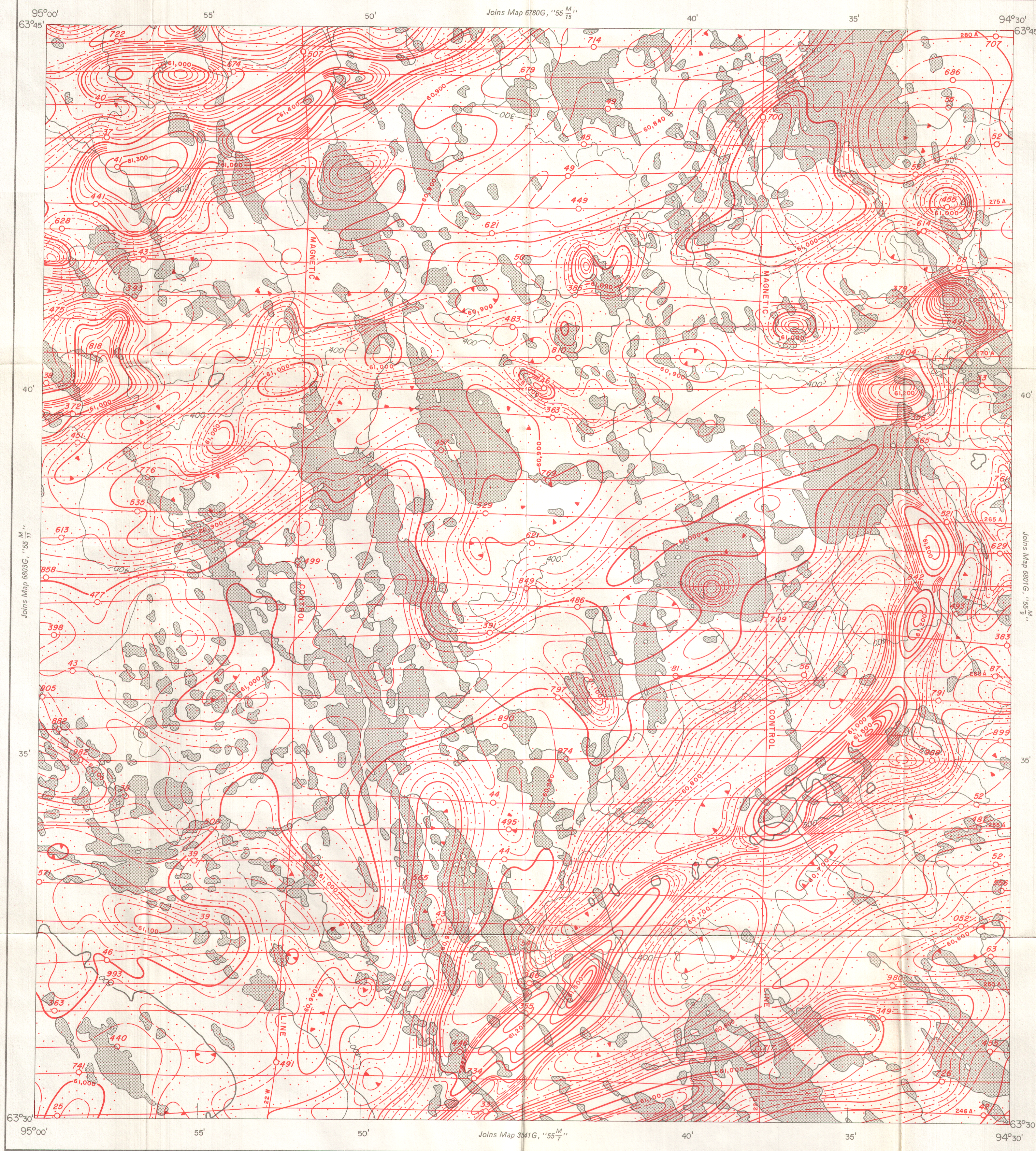


GEOPHYSICAL SERIES (AEROMAGNETIC)

GEOLOGICAL SURVEY OF CANADA  
DEPARTMENT OF ENERGY, MINES AND RESOURCES

SHEET 55  $\frac{M}{10}$



MAP 6802 G

SHEET 55  $\frac{M}{10}$

DISTRICT OF KEEWATIN  
NORTHWEST TERRITORIES

Scale: One Inch to One Mile =  $\frac{1}{63,360}$

1 Mile 1/2 0 1 2 3 Miles

Air photographs covering this map-area may be obtained through the National Air Photographic Library, Topographical Survey, Ottawa, Ontario.

COPIES OF THIS MAP MAY BE OBTAINED FROM THE  
DIRECTOR, GEOLOGICAL SURVEY OF CANADA, OTTAWA

ISOMAGNETIC LINES (absolute total field)

500 gammas .....  
100 gammas .....  
20 gammas .....  
10 gammas .....  
Magnetic depression .....  
Flight lines .....  
Flight altitude 1000 feet above ground level

Airborne Magnetic Survey, June 1971 to August 1971  
by Spartan Aero Limited.

No correction has been made for regional variation.

The topography for this map was reproduced from  
1:250,000 topographical map sheets, published by the  
Department of Energy, Mines and Resources, Ottawa.

The magnetic data on this map were compiled from information recorded along the flight lines shown. The anomalies expressed by the magnetic contours are dependent on the variable magnetic intensities of the underlying rocks, and may be due to conditions near, or at unknown depths below the surface. High magnetic anomalies normally indicate the presence of basic rocks, such as diabase, gabbro, or serpentinite, which have a relatively high iron content, but in special instances may be due, or partly due, to concentrations of magnetic minerals. By means of the magnetic anomalies, various rock bodies or structural features, such as faults or folds, may be traced into, or across, areas of few or no outcrops. In many instances, however, no interpretation of particular anomalies may be possible without further geological information.

MAP 6802 G

NORTHWEST TERRITORIES

SHEET 55  $\frac{M}{10}$

