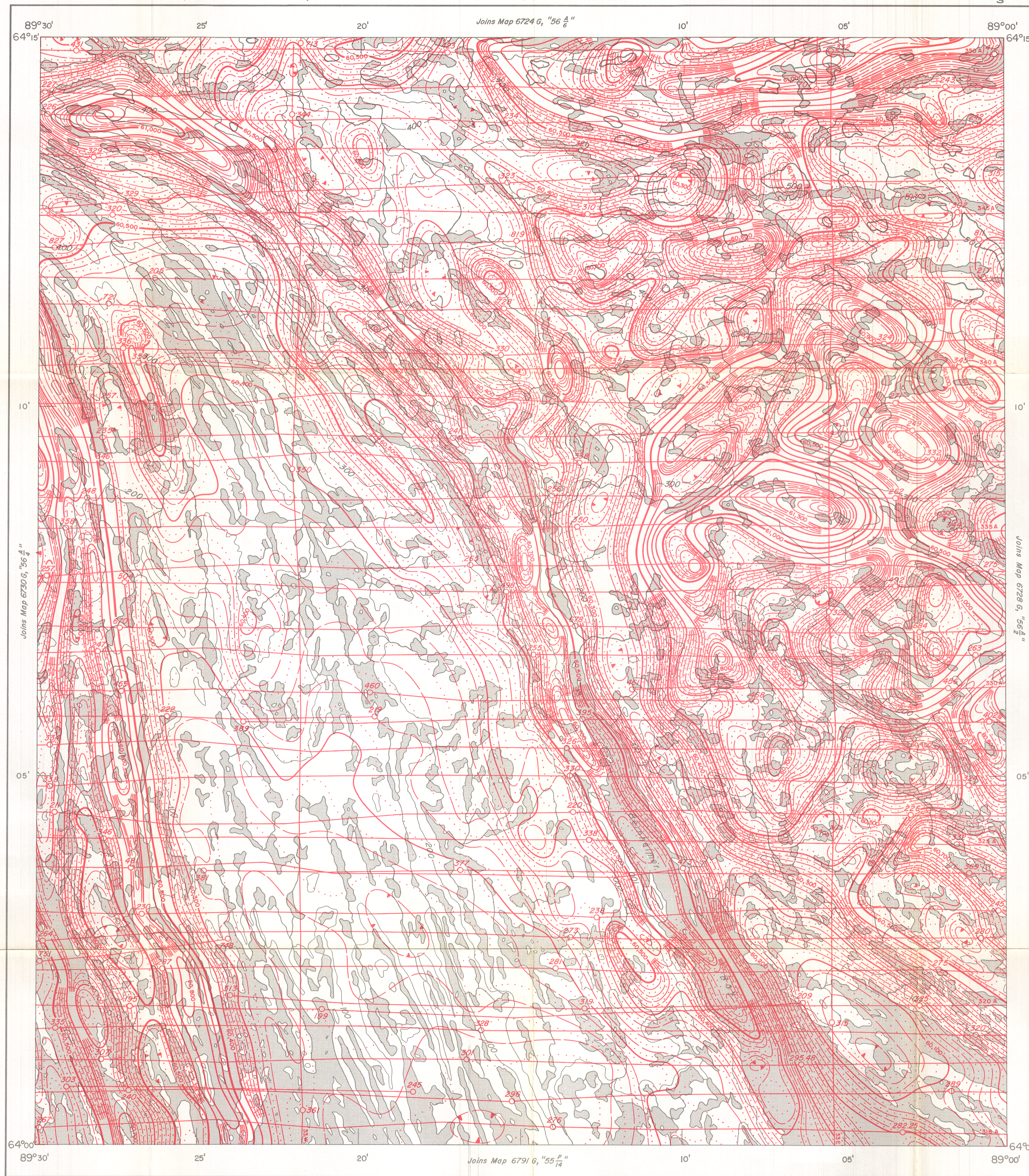


GEOLOGICAL SURVEY OF CANADA  
DEPARTMENT OF ENERGY, MINES AND RESOURCES

GEOPHYSICAL SERIES (AEROMAGNETIC)

SHEET 56 <sup>A</sup>/<sub>3</sub>



PUBLISHED 1972

MAP 6729 G

SHEET 56 <sup>A</sup>/<sub>3</sub>

DISTRICT OF KEEWATIN  
NORTHWEST TERRITORIES

Scale: One Inch to One Mile =  $\frac{1}{63,360}$

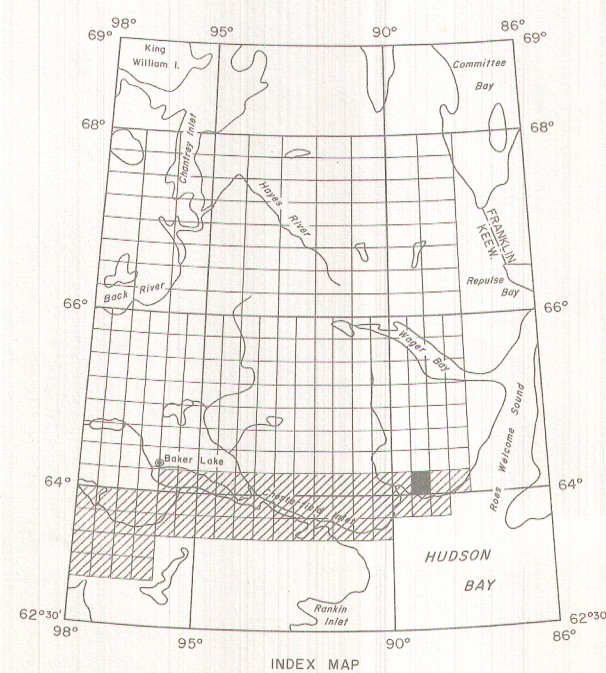
Air photographs covering this map-area may be obtained through the National Air Photographic library, Topographical Survey, Ottawa, Ontario.

COPIES OF THIS MAP MAY BE OBTAINED FROM THE DIRECTOR, GEOLOGICAL SURVEY OF CANADA, OTTAWA.

Airborne Magnetic Survey, June 1971 to August 1971 by Spartan Aero Limited.

No correction has been made for regional variation.

The topography for this map was reproduced from 1:250,000 topographical map sheets, published by the Department of Energy, Mines and Resources, Ottawa.



ISOMAGNETIC LINES (absolute total field)

- 500 gammas .....
- 100 gammas .....
- 20 gammas .....
- 10 gammas .....
- Magnetic depression .....

Flight lines ..... 10.5  
Flight altitude 1000 feet above ground level

MAP 6729 G

NORTHWEST TERRITORIES

SHEET 56 <sup>A</sup>/<sub>3</sub>