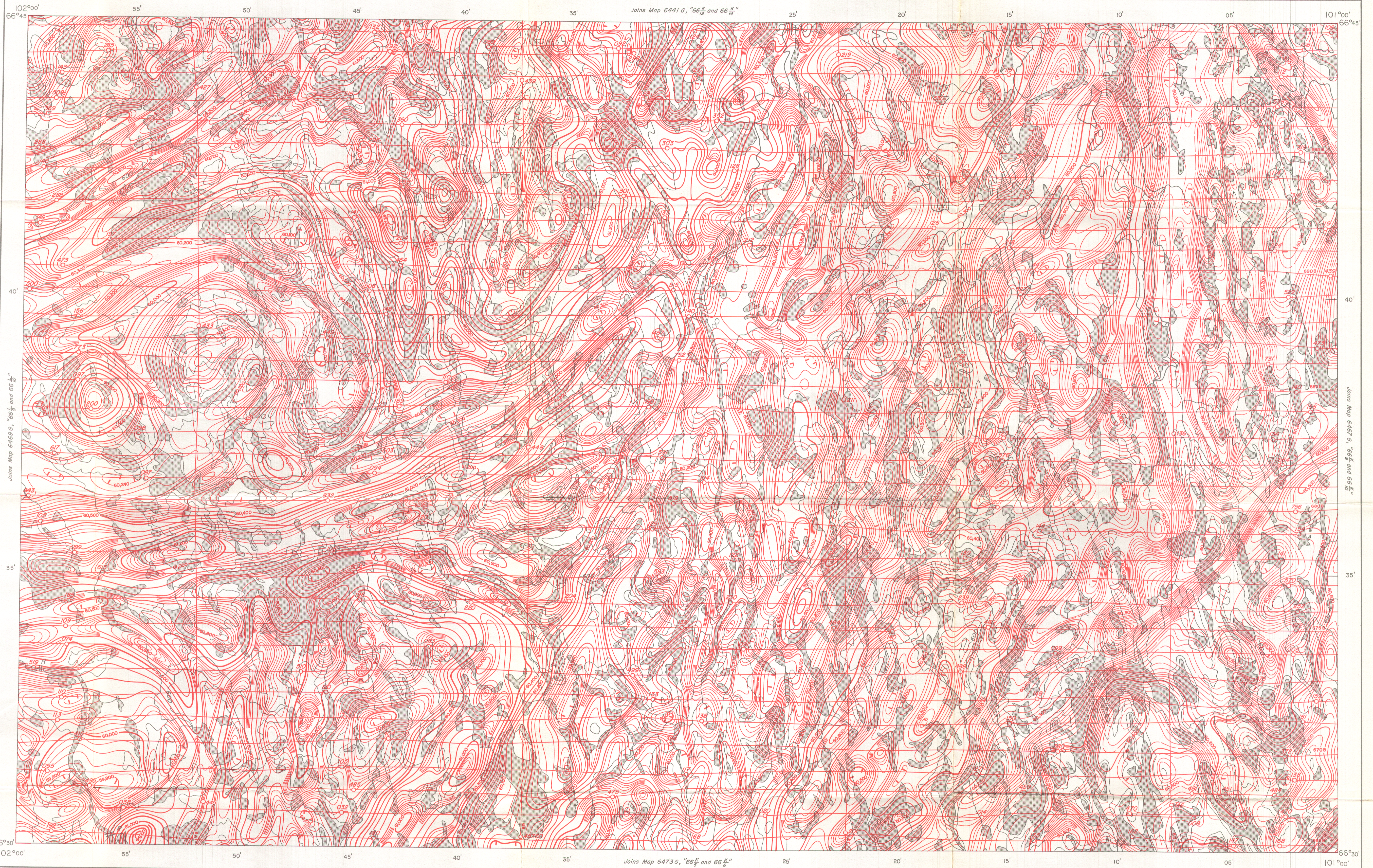


Joins Map 6441 G, "66 ^K/₁₁" and 66 ^K/₁₂"



Joins Map 6469 G, "66 ^K/₁₁" and 66 ^K/₁₂"

Joins Map 6487 G, "66 ^K/₁₁" and 66 ^K/₁₂"

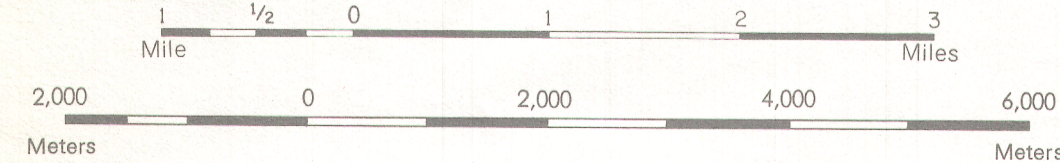
Joins Map 6473 G, "66 ^K/₁₁" and 66 ^K/₁₂"

MAP 6468 G

SHEET 66 ^K/₁₁ AND 66 ^K/₁₂

DISTRICT OF KEEWATIN NORTHWEST TERRITORIES

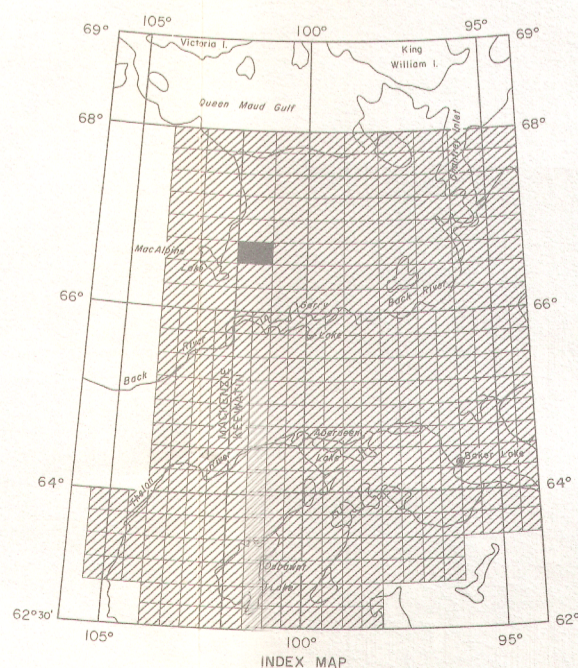
Scale: One Inch to One Mile = $\frac{1}{63,360}$



Air photographs covering this map-area may be obtained through the National Air Photographic Library, Topographical Survey, Ottawa, Ontario.

COPIES OF THIS MAP MAY BE OBTAINED FROM THE DIRECTOR, GEOLOGICAL SURVEY OF CANADA, OTTAWA.

PUBLISHED 1976



ISOMAGNETIC LINES (absolute total field)

- 500 gammas
- 100 gammas
- 20 gammas
- 10 gammas
- Magnetic depression

Flight lines
Flight altitude 1000 feet above ground level

Airborne Magnetic Survey, Aug 1974 to July 1975 by Kenting Earth Sciences Limited.

No correction has been made for regional variation.

The topography for this map was reproduced from 1:250,000 topographical map sheets, published by the Department of Energy, Mines and Resources, Ottawa.

The magnetic data on this map were compiled from information recorded along the flight lines shown. The anomalies expressed by the magnetic contours are dependent on the variable magnetic intensities of the underlying rocks, and may be due to conditions near, or at unknown depths below the surface. High magnetic anomalies normally indicate the presence of basic rocks, such as diabase, gabbro, or serpentinite, which have a relatively high iron content, but in special instances may be due, or partly due, to concentrations of magnetic minerals. By means of the magnetic anomalies, various rock bodies or structural features, such as faults or folds, may be traced into, or across, areas of low or no outcrops. In many instances, however, no interpretation of particular anomalies may be possible without further geological information.

MAP 6468 G

NORTHWEST TERRITORIES

SHEET 66 ^K/₁₁ AND 66 ^K/₁₂