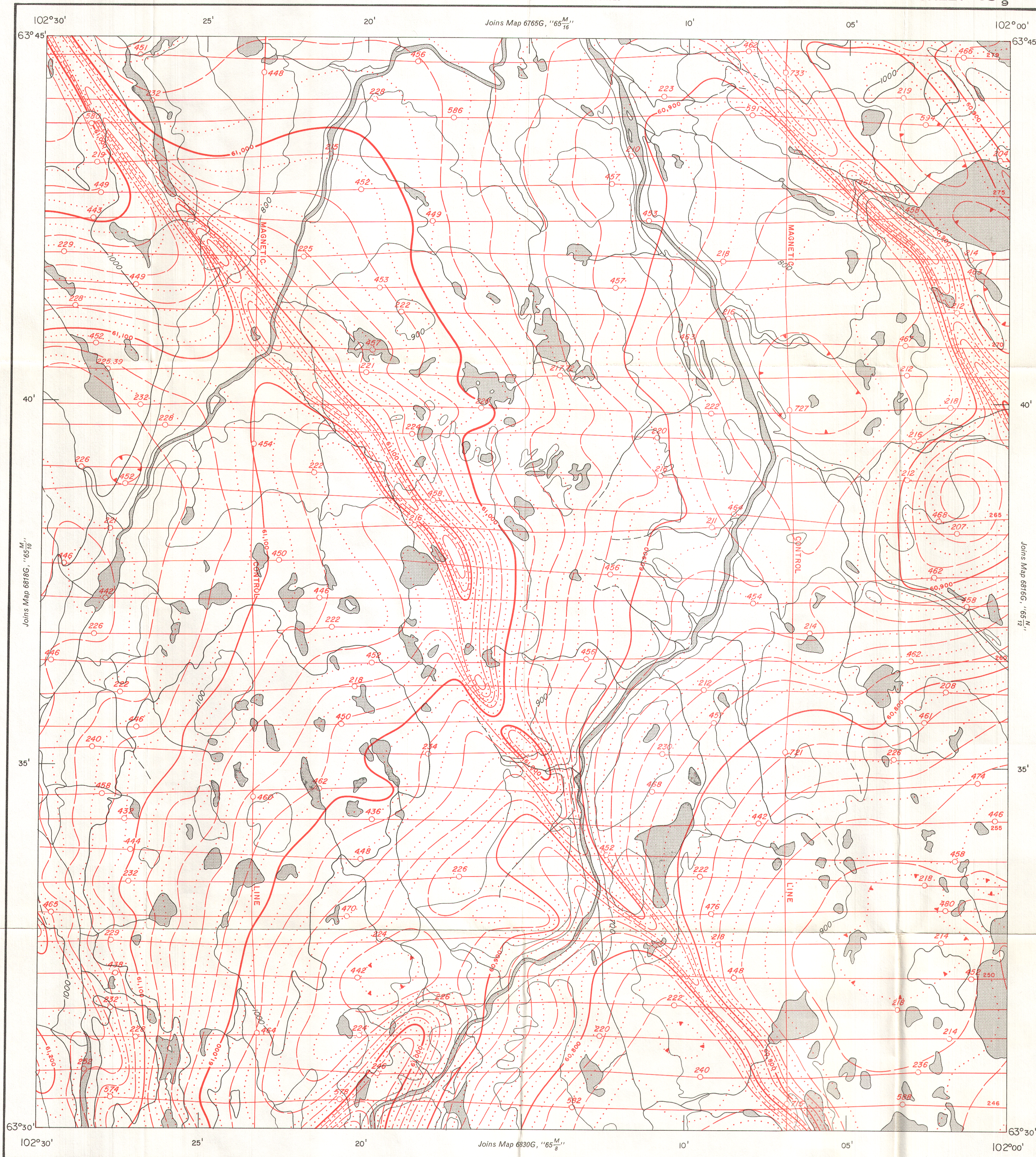


GEOLOGICAL SURVEY OF CANADA
DEPARTMENT OF ENERGY, MINES AND RESOURCES

GEOPHYSICAL SERIES (AEROMAGNETIC)

SHEET 65 ^M/₉



MAP 6817G

SHEET 65 ^M/₉

DISTRICT OF MACKENZIE
NORTHWEST TERRITORIES

Scale: One Inch to One Mile = $\frac{1}{63,360}$

Air photographs covering this map-area may be obtained through the National Air Photographic Library, Topographical Survey, Ottawa, Ontario.

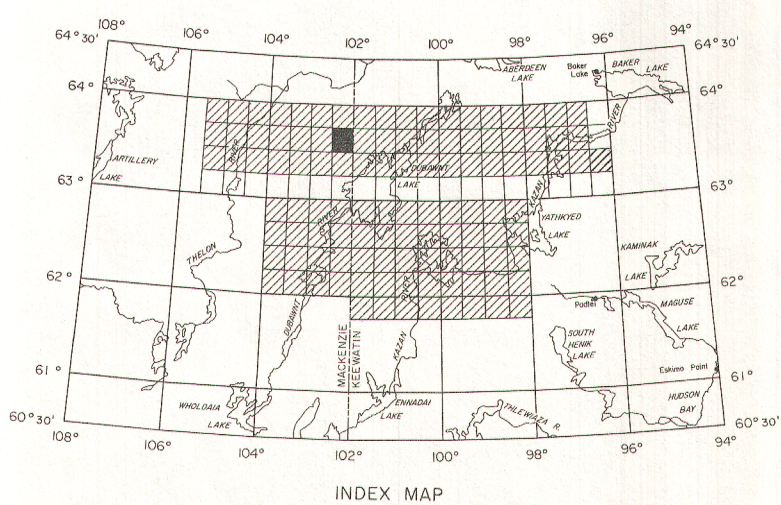
COPIES OF THIS MAP MAY BE OBTAINED FROM THE DIRECTOR, GEOLOGICAL SURVEY OF CANADA, OTTAWA.

The magnetic data on this map were compiled from information recorded along the flight lines shown. The anomalies expressed by the magnetic contours are dependent on the variable magnetic intensities of the underlying rocks, and may be due to conditions near, or at unknown depths below the surface. High magnetic anomalies normally indicate the presence of basic rocks, such as diabase, gabbro, or serpentinite, which have a relatively high iron content, but in special instances may be due, or partly due, to concentrations of magnetic minerals. By means of the magnetic anomalies, various rock bodies or structural features, such as faults or folds, may be traced into, or across, areas of few or no outcrops. In many instances, however, no interpretation of particular anomalies may be possible without further geological information.

MAP 6817G

NORTHWEST TERRITORIES

SHEET 65 ^M/₉



ISOMAGNETIC LINES (absolute total field)

- 500 gammas
- 100 gammas
- 20 gammas
- 10 gammas
- Magnetic depression
- Flight lines
- Flight altitude 1000 feet above ground level