

4799G

AEROMAGNETIC SERIES

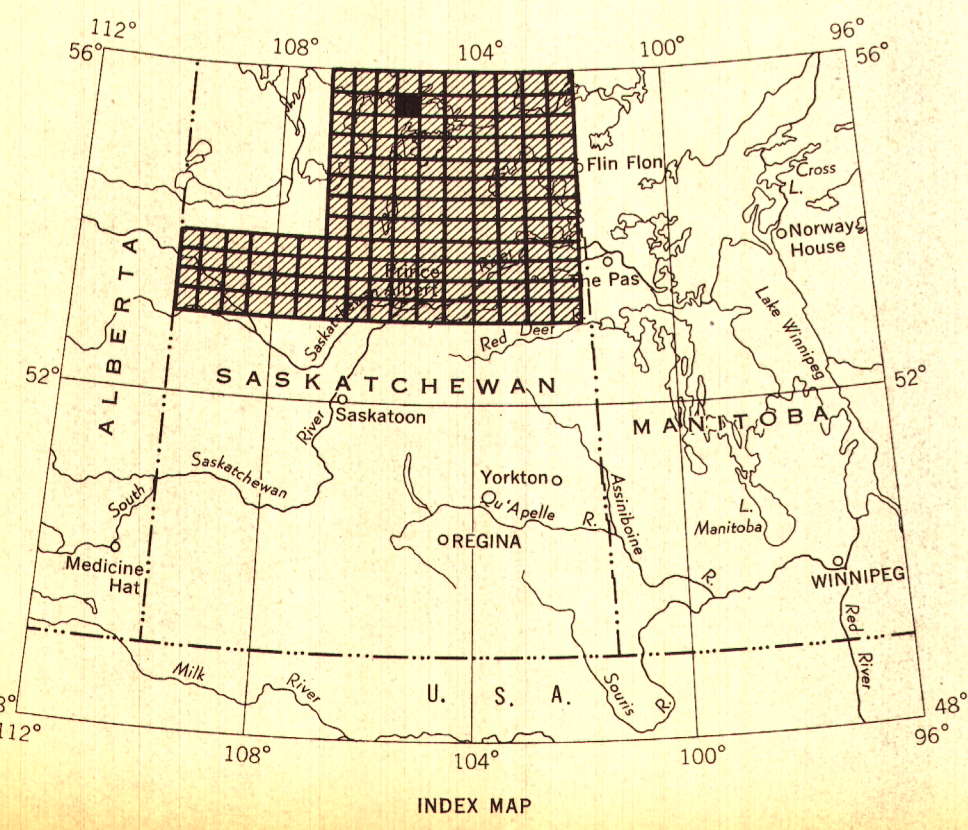
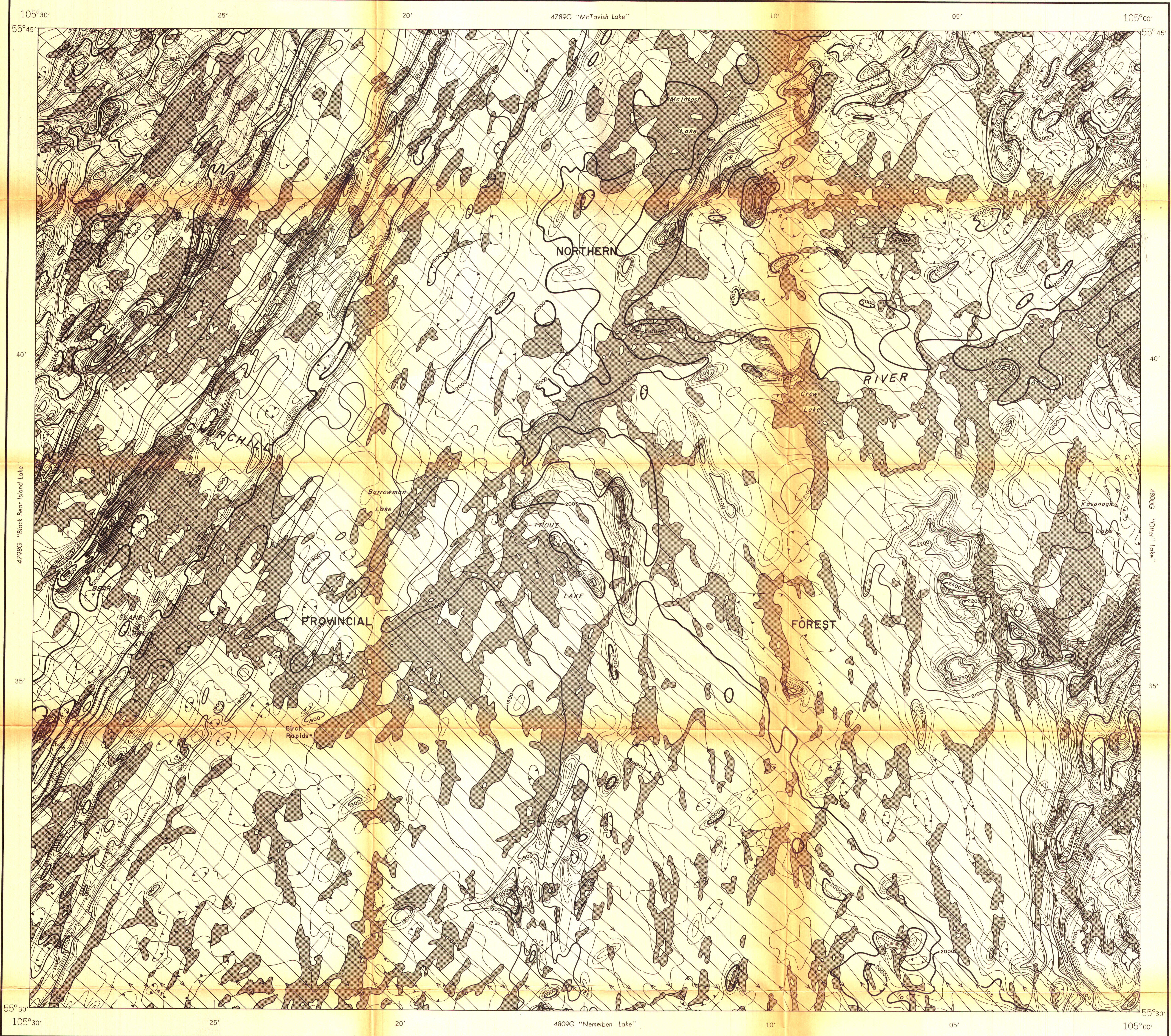
PROVINCE OF SASKATCHEWAN  
DEPARTMENT OF MINERAL RESOURCES

DEPARTMENT OF MINES AND TECHNICAL SURVEYS  
GEOLOGICAL SURVEY OF CANADA

1:50 000

SHEET 73 P 11

4799G



ISOMAGNETIC LINES (absolute total field)

500 gammas . . . . .

100 gammas . . . . .

20 gammas . . . . .

Magnetic depression . . . . .

Flight lines . . . . .

Flight altitude: 450 feet above ground level

MAP 4799G

# BIRCH RAPIDS

## SASKATCHEWAN

Scale 1:50 000 - Échelle 1/50 000

Kilometres 0 1 2 3 4 Kilomètres

Universal Transverse Mercator Projection  
© Crown copyright reserved

Projection transversale universelle de Mercator  
© Droits de la Couronne réservés

Airborne Magnetic Survey, March 1958 by Canadian Aero Service Ltd. for the Department of Mineral Resources, Province of Saskatchewan  
Redrawn at a scale of one inch equals one mile by Aero Photo Inc., 1966

No correction has been made for regional variation.

The planimetry for this map was obtained from the topographical map sheet published at a scale of 1:250,000

The magnetic data on this map were compiled from information recorded along the flight lines shown. The anomalies expressed by the magnetic contours are dependent on the variable magnetic intensities of the underlying rocks, and may be due to conditions near, or at unknown depths below the surface. High magnetic anomalies normally indicate the presence of basic rocks, such as diabase, gabbro, or serpentinite, which have a relatively high iron content; but in special instances may be due, or partly due, to concentrations of magnetic minerals. By means of the magnetic anomalies, various rock bodies or structural features, such as faults or folds, may be traced into, or across, areas of few or no outcrops. In many instances, however, no interpretation of particular anomalies may be possible without further geological information.

GEOPHYSICS PAPER 4799

BIRCH RAPIDS  
SASKATCHEWAN

SHEET 73 P 11

PUBLISHED 1966