

5212G

AEROMAGNETIC SERIES

PROVINCE OF BRITISH COLUMBIA  
DEPARTMENT OF MINES AND PETROLEUM RESOURCES

DEPARTMENT OF ENERGY, MINES AND RESOURCES  
GEOLOGICAL SURVEY OF CANADA

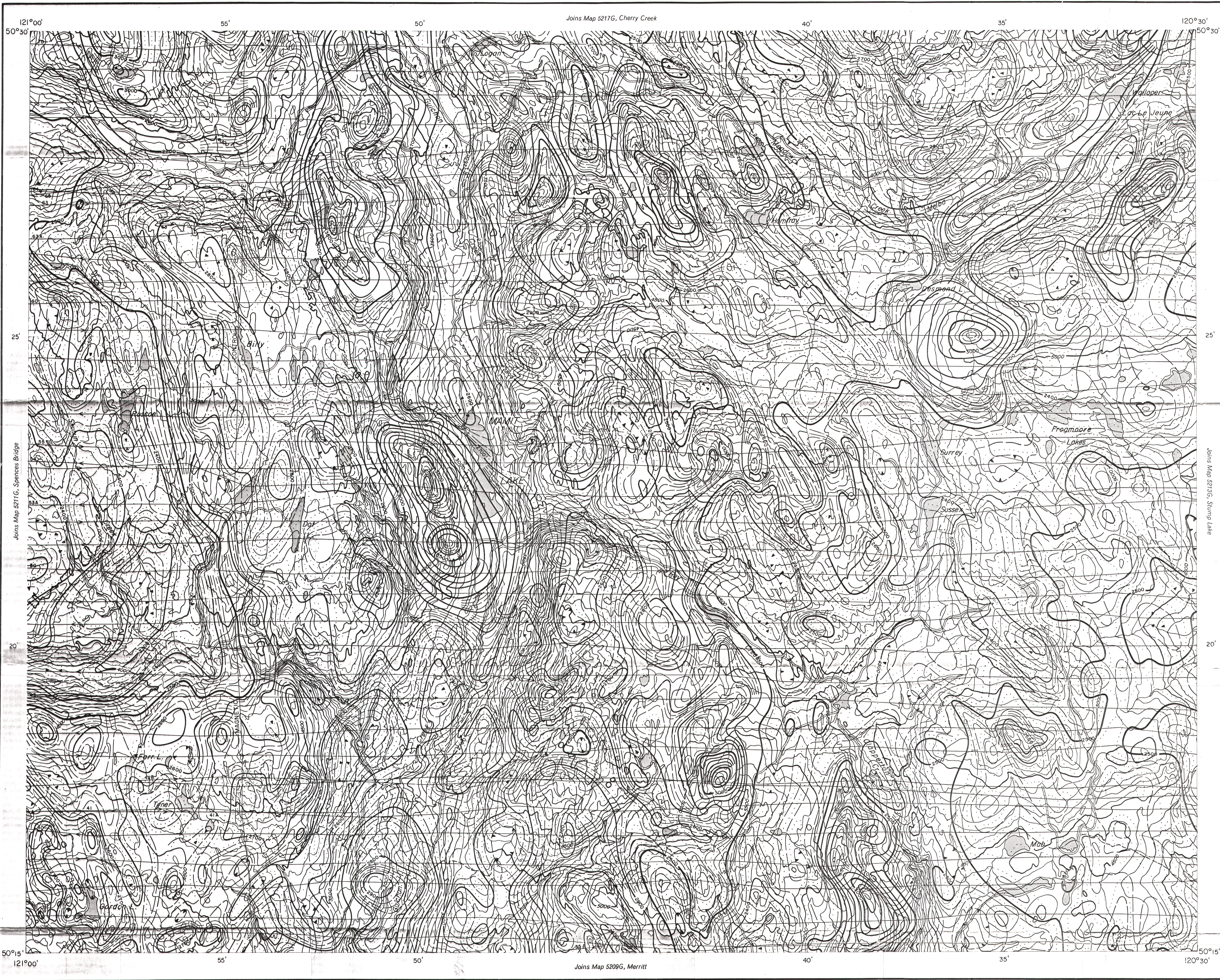
1:50 000

5212G

SHEET 92 1/7

Joins Map 5217G, Cherry Creek

Joins Map 5209G, Merritt



# MAP 5212G

## MAMIT LAKE

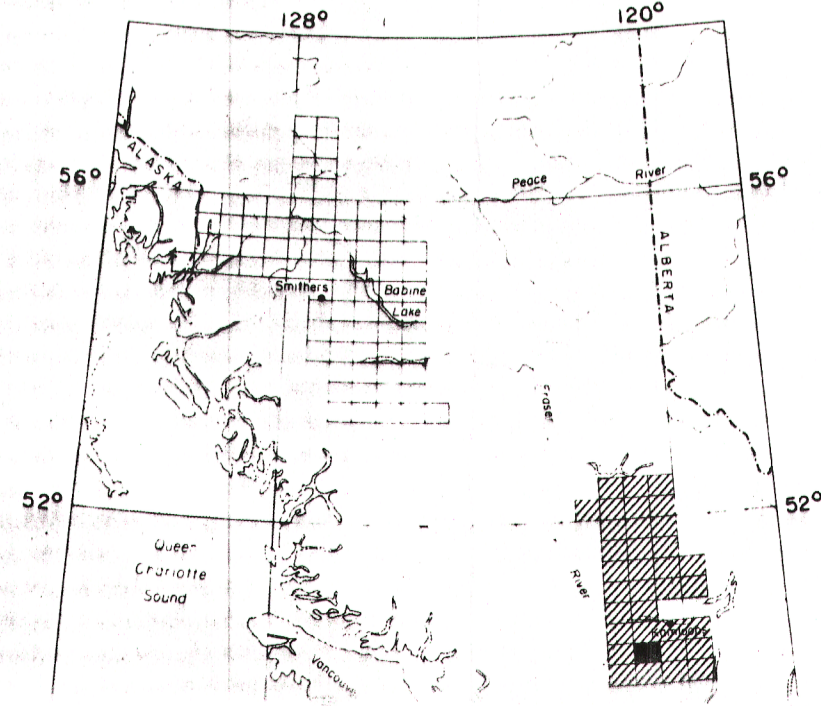
### BRITISH COLUMBIA

Scale 1:50 000 - Échelle 1/50 000  
Kilometres 1 2 3 4 Kilometres  
Universal Transverse Mercator Projection  
© Crown copyrights reserved  
Projection transverse universelle de Mercator  
© Droits de la Couronne réservés

Airborne Magnetic Survey, June 1967 to September 1967  
by Lockwood Survey Corporation Ltd.  
The planimetry for this map was obtained from  
topographical map sheets published by the  
Department of Energy, Mines and Resources, Ottawa.  
No correction has been made for regional variation.

The magnetic data on this map were compiled from information recorded along the flight lines shown. The anomalies expressed by the magnetic contours are dependent on the variable magnetic intensities of the underlying rocks, and may be due to conditions near, or at unknown depths below the surface. High magnetic anomalies normally indicate the presence of basic rocks, such as diabase, gabbro, or serpentinite, which have a relatively high iron content, but in special instances may be due, or partly due, to concentrations of magnetic minerals. By means of the magnetic anomalies, various rock bodies or structural features, such as faults or folds, may be traced into, or across, areas of few or no outcrops. In many instances, however, no interpretation of particular anomalies may be possible without further geological information.

GEOPHYSICS PAPER 5212  
MAMIT LAKE  
BRITISH COLUMBIA  
SHEET 92 1/7



- ISOMAGNETIC LINES (total field)
- 500 gammas
  - 100 gammas
  - 20 gammas
  - 10 gammas
  - Magnetic depression
  - Flight lines
  - Flight altitude 1000 feet above ground level

PUBLISHED 1968