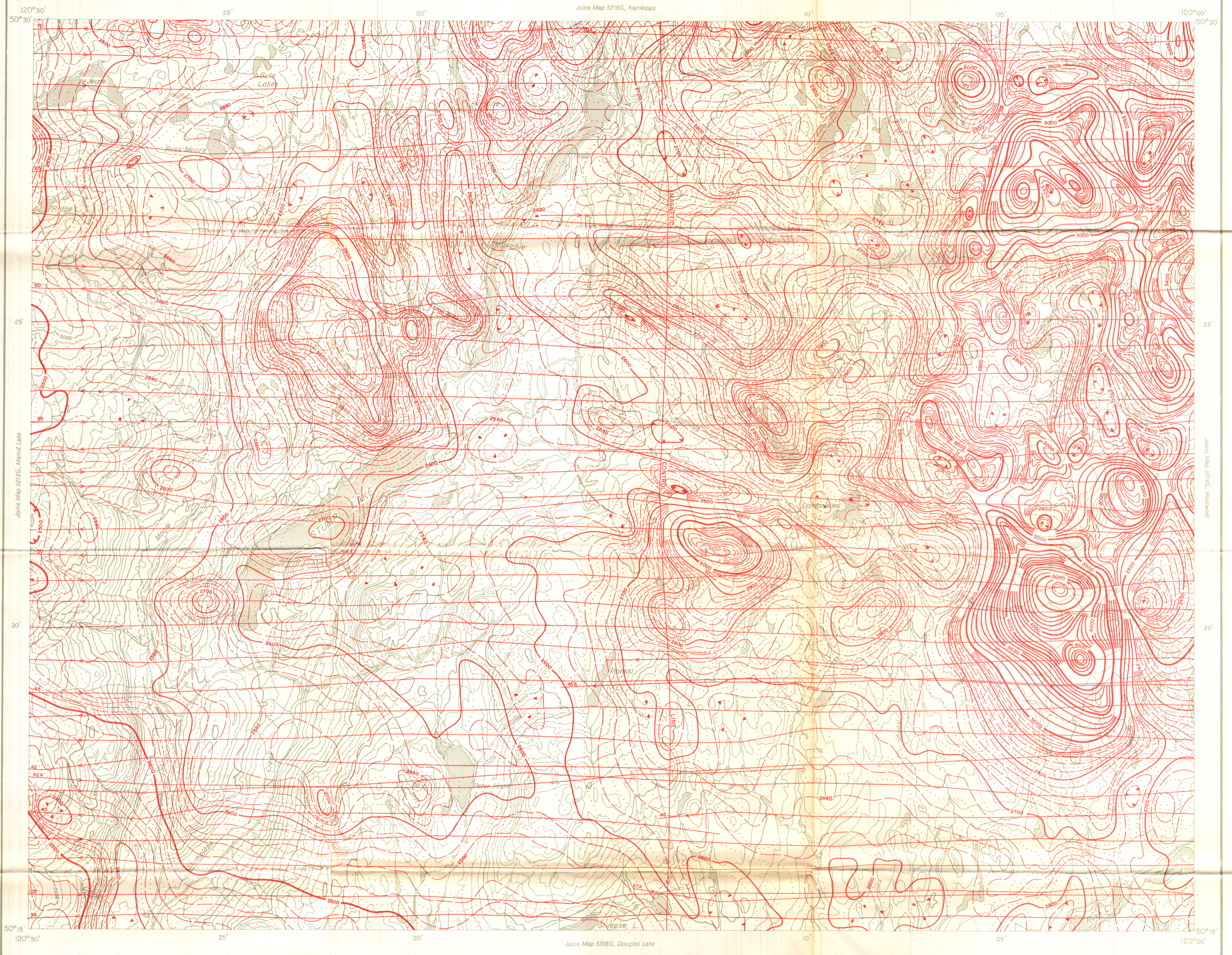


Joins Map 5216G, Kamloops

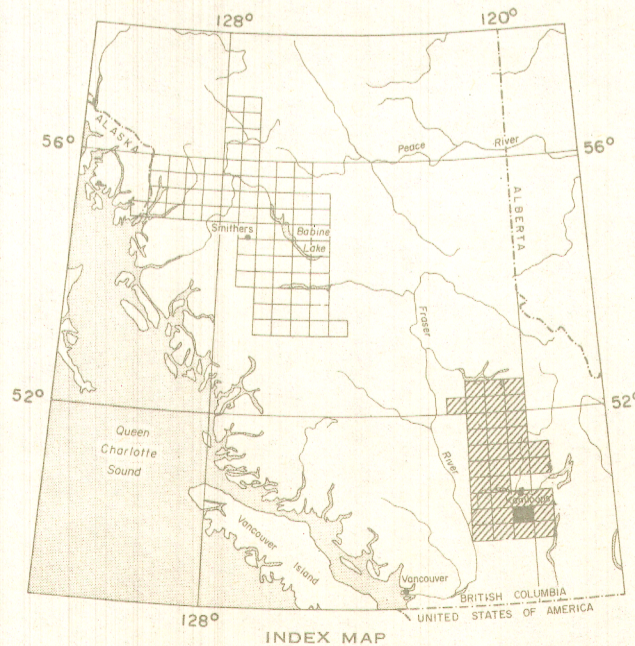
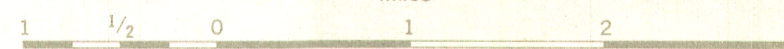


MAP 5213G

STUMP LAKE

BRITISH COLUMBIA

Scale: One Inch to One Mile = $\frac{1}{63,360}$ Miles



- ISOMAGNETIC LINES (total field)
- 500 gammas
 - 100 gammas
 - 20 gammas
 - 10 gammas
 - Magnetic depression
 - Flight lines
 - Flight altitude 1000 feet above ground level

Airborne Magnetic Survey, June 1967 to September 1967 by Lockwood Survey Corporation Ltd.

The planimetry for this map was obtained from topographical map sheets published by the Department of Energy, Mines and Resources, Ottawa.

No correction has been made for regional variation.

The magnetic data on this map were compiled from information recorded along the flight lines shown. The anomalies expressed by the magnetic contours are dependent on the variable magnetic intensities of the underlying rocks, and may be due to conditions near, or at unknown depths below the surface. High magnetic anomalies normally indicate the presence of basic rocks, such as diabase, gabbro, or serpentinite, which have a relatively high iron content, but in special instances may be due, or partly due, to concentrations of magnetic minerals. By means of the magnetic anomalies, various rock bodies or structural features, such as faults or folds, may be traced into, or across, areas of few or no outcrops. In many instances, however, no interpretation of particular anomalies may be possible without further geological information.