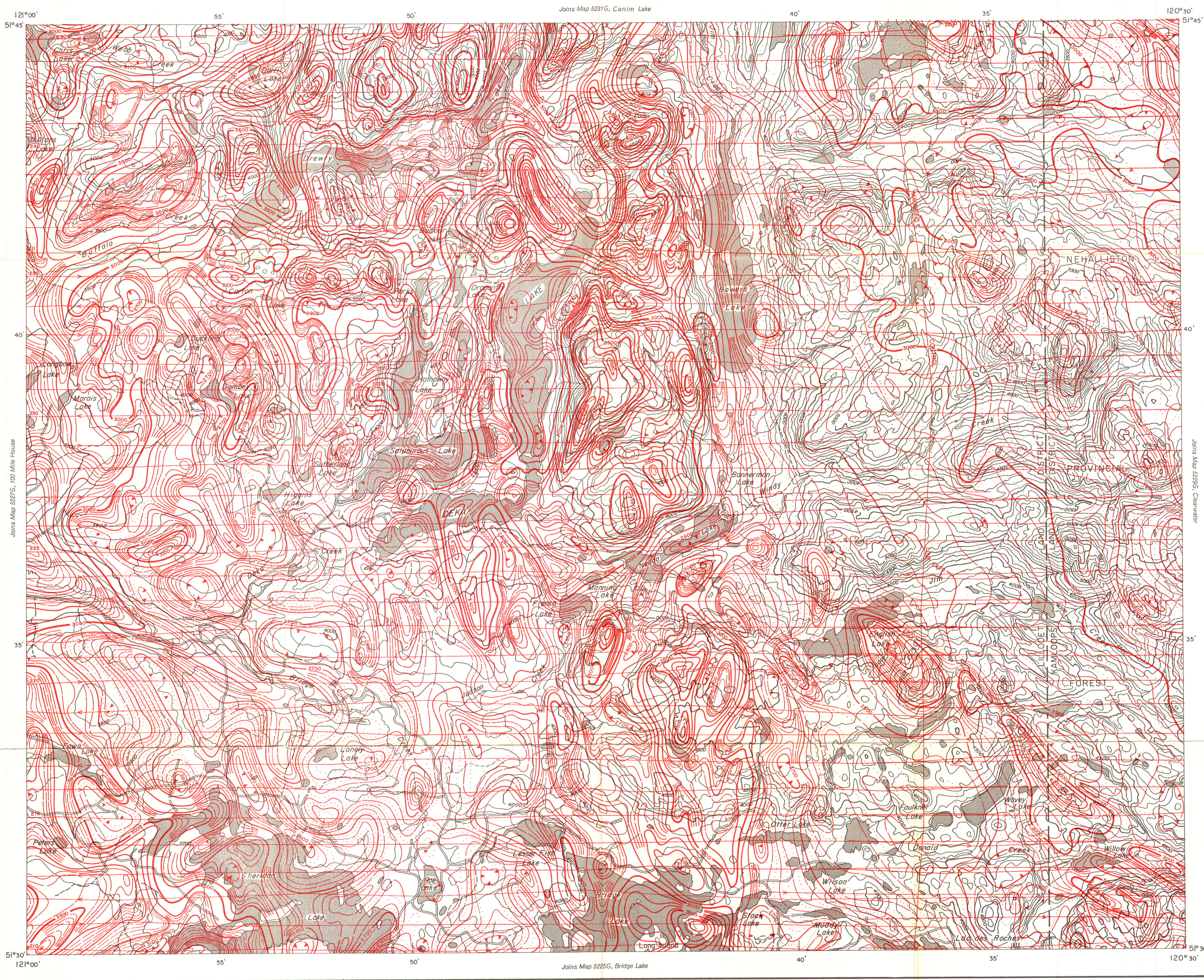


Joins Map 5281G, Canim Lake

Joins Map 5285G, Bridge Lake



Joins Map 5227G, 100 Mile House

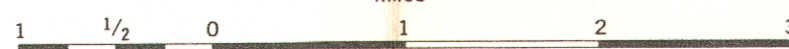
Joins Map 5283G, Clearwater

PUBLISHED 1988

MAP 5228G

DEKA LAKE
BRITISH COLUMBIA

Scale: One Inch to One Mile = $\frac{1}{63,360}$
Miles



- ISOMAGNETIC LINES (total field)
- 500 gammas
- 100 gammas
- 20 gammas
- 10 gammas
- Magnetic depression
- Flight lines
- Flight altitude 1000 feet above ground level

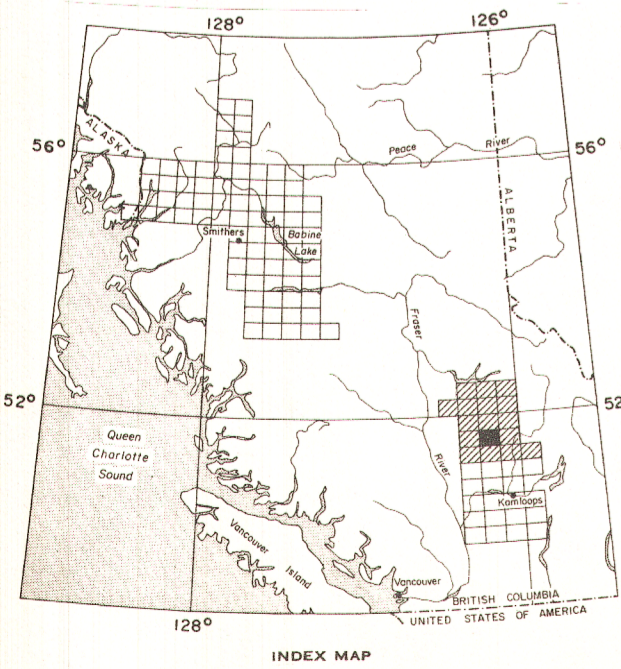
Airborne Magnetic Survey, April to September 1967
by Lockwood Survey Corporation Ltd.

The planimetry for this map was obtained from
topographical map sheets published by the
Department of Energy, Mines and Resources, Ottawa.

No correction has been made for regional variation.

The magnetic data on this map were compiled from information recorded along the flight lines shown. The anomalies expressed by the magnetic contours are dependent on the variable magnetic intensities of the underlying rocks, and may be due to conditions near, or at unknown depths below the surface. High magnetic anomalies normally indicate the presence of basic rocks, such as diabase, gabbro, or serpentinite, which have a relatively high iron content, but in special instances may be due, or partly due, to concentrations of magnetic minerals. By means of the magnetic anomalies, various rock bodies or structural features, such as faults or folds, may be traced into, or across, areas of few or no outcrops. In many instances, however, no interpretation of particular anomalies may be possible without further geological information.

GEOPHYSICS PAPER 5228
DEKA LAKE
BRITISH COLUMBIA
SHEET 92 P 10



INDEX MAP