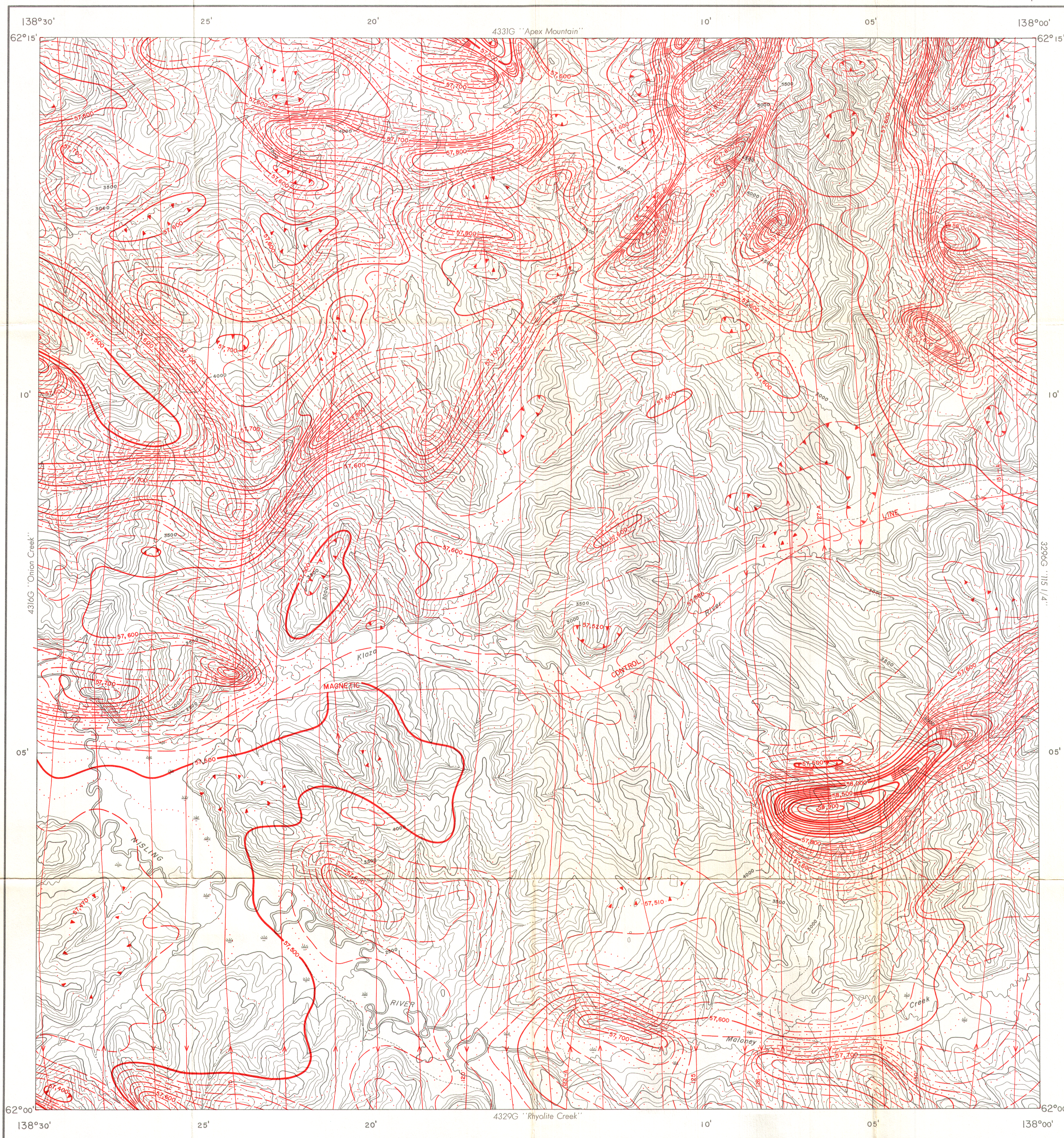


GEOLOGICAL SURVEY OF CANADA  
DEPARTMENT OF ENERGY, MINES AND RESOURCES

AEROMAGNETIC SERIES

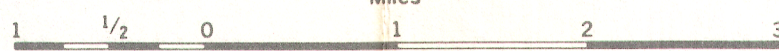
SHEET 115  $\frac{1}{1}$



MAP 4330 G

## KLAZA RIVER YUKON TERRITORY

Scale: One inch to One Mile =  $\frac{1}{63,360}$  Miles



COPIES OF THIS MAP MAY BE OBTAINED FROM THE DIRECTOR, GEOLOGICAL SURVEY OF CANADA, OTTAWA

ISOMAGNETIC LINES (absolute total field)

- 500 gammas
- 100 gammas
- 20 gammas
- 10 gammas
- Magnetic depression

Flight lines  
Flight altitude: nominally 1000 feet above ground level where terrain permitted

Magnetic survey, March 1967 to May 1968 by Aero Photo Inc.

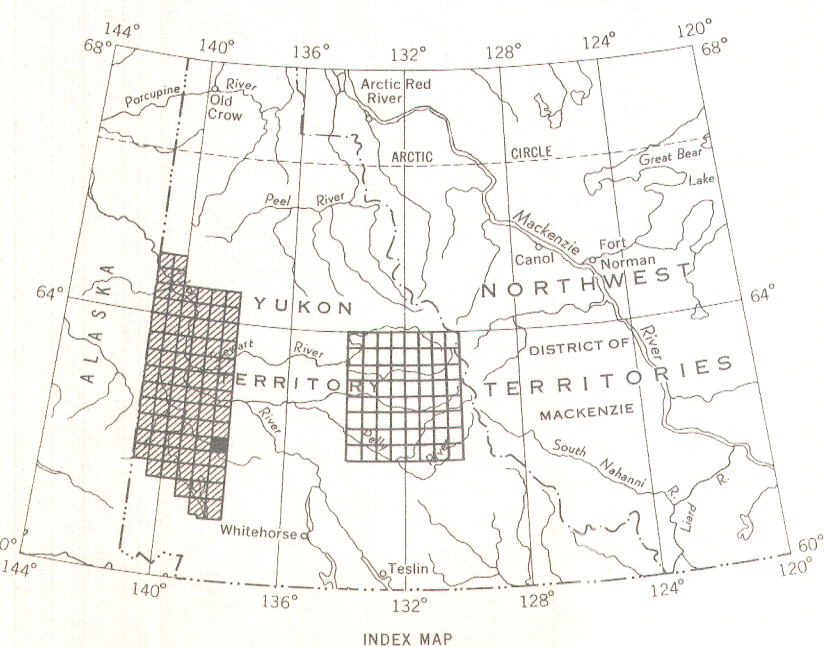
No correction has been made for regional variation

The planimetry for this map was obtained from advance information supplied by the Department of Energy, Mines and Resources

The magnetic data on this map were compiled from information recorded along the flight lines shown. The anomalies expressed by the magnetic contours are dependent on the variable magnetic intensities of the underlying rocks, and may be due to conditions near, or at unknown depths below the surface. High magnetic anomalies normally indicate the presence of basic rocks, such as diabase, gabbro, or serpentine, which have a relatively high iron content, but in special instances may be due, or partly due, to concentrations of magnetic ore minerals. By means of the magnetic anomalies, various rock bodies or structural features, such as faults or folds, may be traced into, or across, areas of low or no outcrops. In many instances, however, no interpretation of particular anomalies may be possible without further geological information.

GEOPHYSICS PAPER 4330

KLAZA RIVER  
YUKON TERRITORY  
SHEET 115  $\frac{1}{1}$



INDEX MAP