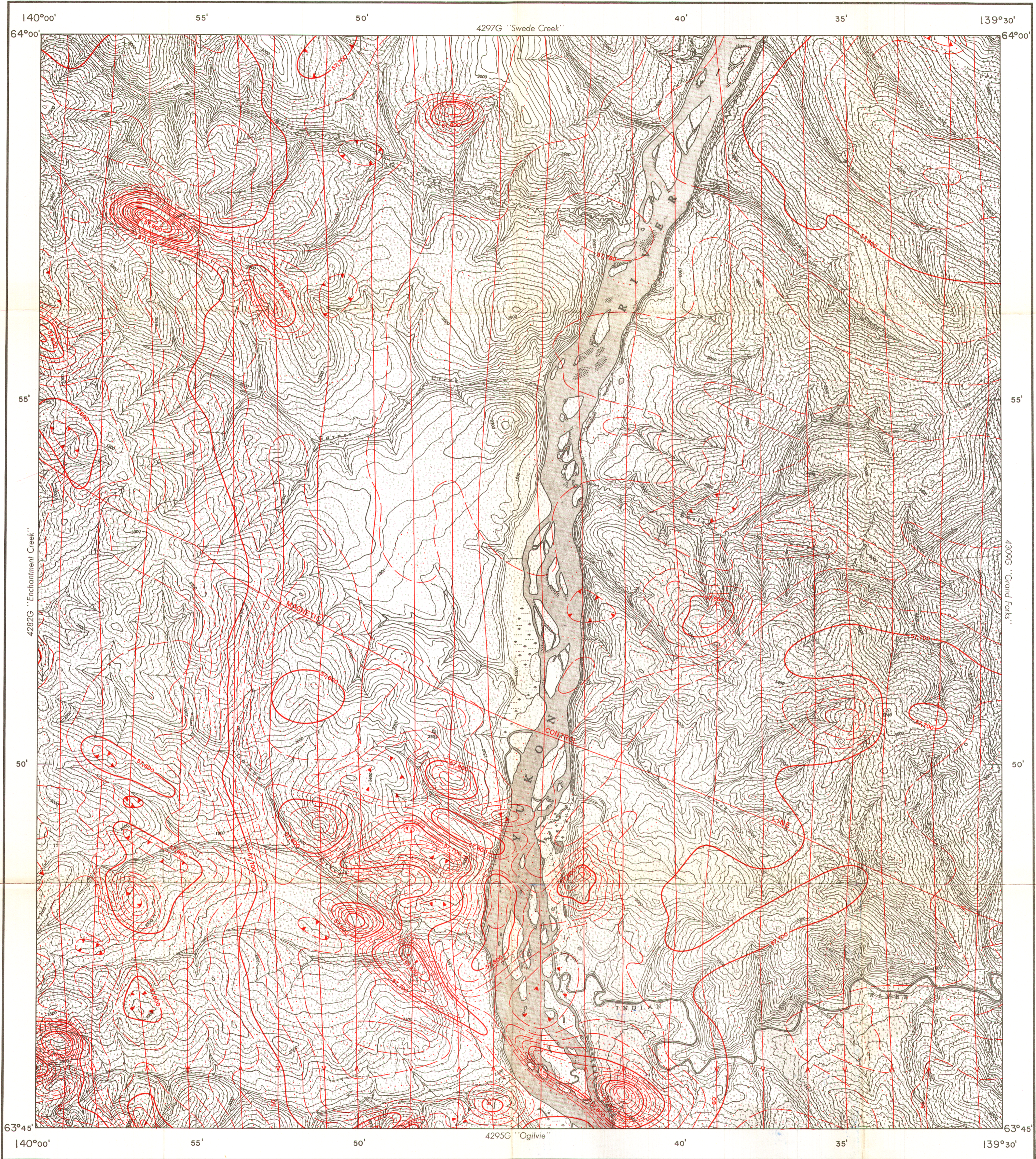


GEOLOGICAL SURVEY OF CANADA
DEPARTMENT OF MINES AND TECHNICAL SURVEYS

AEROMAGNETIC SERIES

SHEET 115 ^Q/₁₃



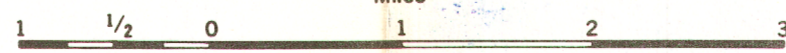
MAP 4296 G

PUBLISHED, 1967

GARNER CREEK

YUKON TERRITORY

Scale: One Inch = One Mile = $\frac{1}{63,360}$ Miles



COPIES OF THIS MAP MAY BE OBTAINED FROM THE DIRECTOR, GEOLOGICAL SURVEY OF CANADA, OTTAWA

ISOMAGNETIC LINES (absolute total field)

- 500 gammas
- 100 gammas
- 20 gammas
- 10 gammas
- Magnetic depression
- Flight lines
- Flight altitude: nominally 1000 feet above ground level where terrain permitted

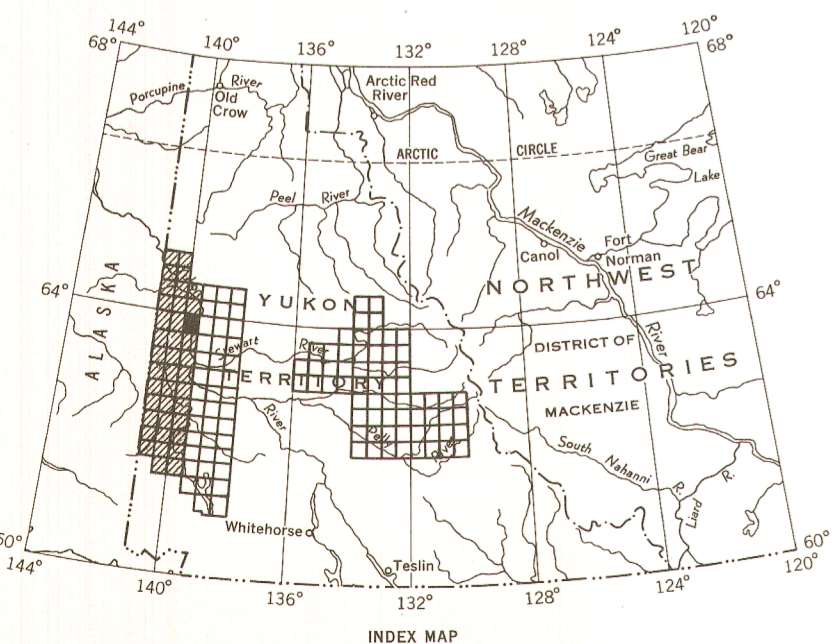
Magnetic survey, October 1965 to April 1966 by Aero Photo Inc.
No correction has been made for regional variation

The planimetry for this map was obtained from topographical map sheets, published by the Department of Mines and Technical Surveys.

The magnetic data on this map were compiled from information recorded along the flight lines shown. The anomalies expressed by the magnetic contours are dependent on the variable magnetic intensities of the underlying rocks, and may be due to conditions near, or at unknown depths below the surface. High magnetic anomalies normally indicate the presence of basic rocks, such as diabase, gabbro, or serpentine, which have a relatively high iron content, but in special instances may be due, or partly due, to concentrations of magnetic ore minerals. By means of the magnetic anomalies, various rock bodies or structural features, such as faults or folds, may be traced into, or across, areas of few or no outcrops. In many instances, however, no interpretation of particular anomalies may be possible without further geological information.

GEOPHYSICS PAPER 4296

GARNER CREEK
YUKON TERRITORY
SHEET 115 ^Q/₁₃



INDEX MAP