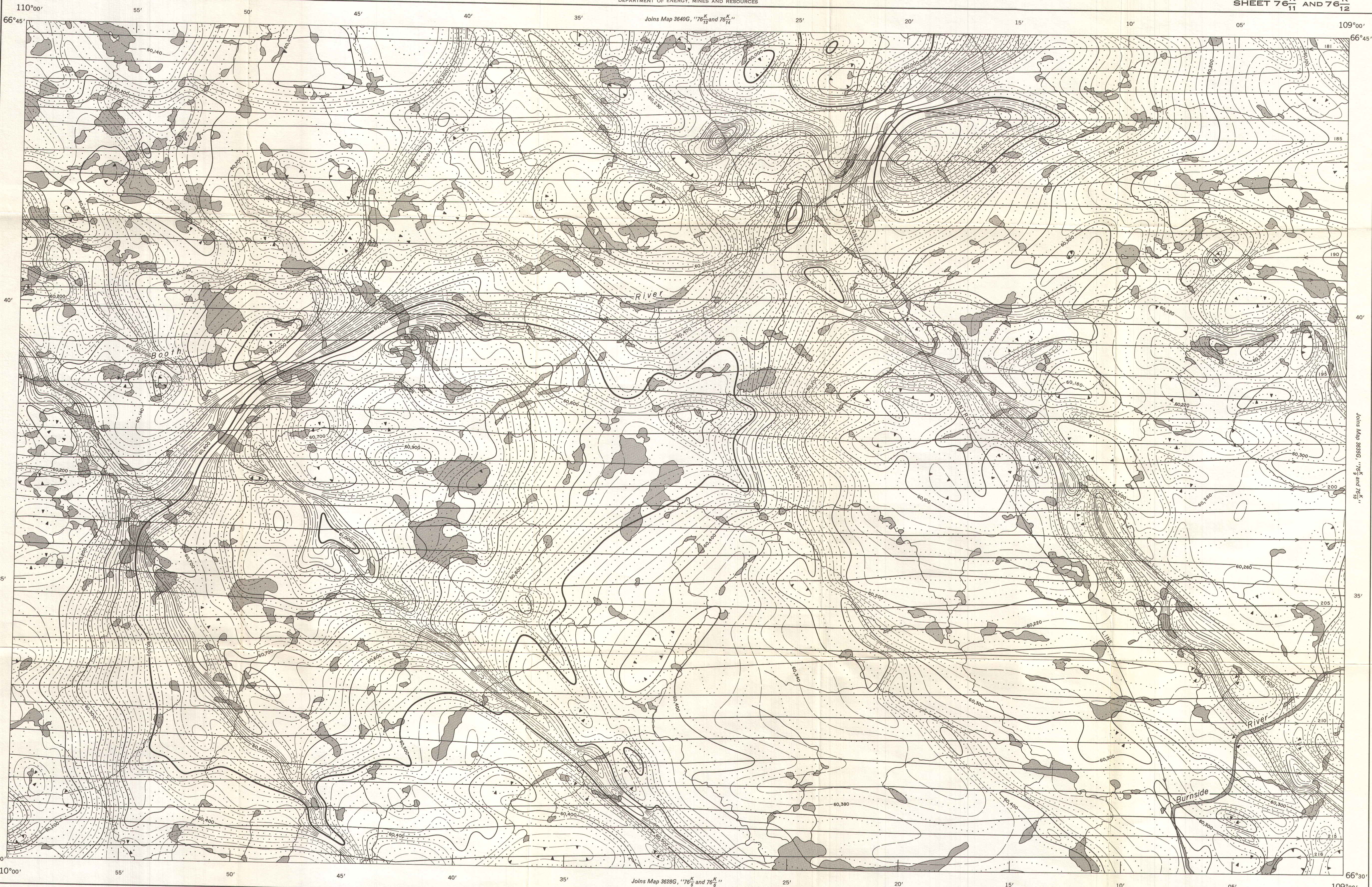


GEOLOGICAL SURVEY OF CANADA
DEPARTMENT OF ENERGY, MINES AND RESOURCES

AEROMAGNETIC SERIES

SHEET 76^K₁₁ AND 76^K₁₂



Joins Map 3640G, "76^K₁₁ and 76^K₁₂"

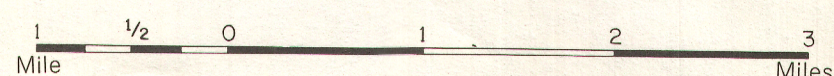
Joins Map 3628G, "76^K₁₁ and 76^K₁₂"

MAP 3634G

SHEET 76^K₁₁ AND 76^K₁₂

DISTRICT OF MACKENZIE
NORTHWEST TERRITORIES

Scale: One Inch to One Mile = $\frac{1}{63,360}$



COPIES OF THIS MAP MAY BE OBTAINED FROM THE
DIRECTOR, GEOLOGICAL SURVEY OF CANADA, OTTAWA.

Airborne Magnetic Survey, Aug. 1967 to Aug. 1968,
by Spartan Air Services Ltd.

No correction has been made for regional variation.

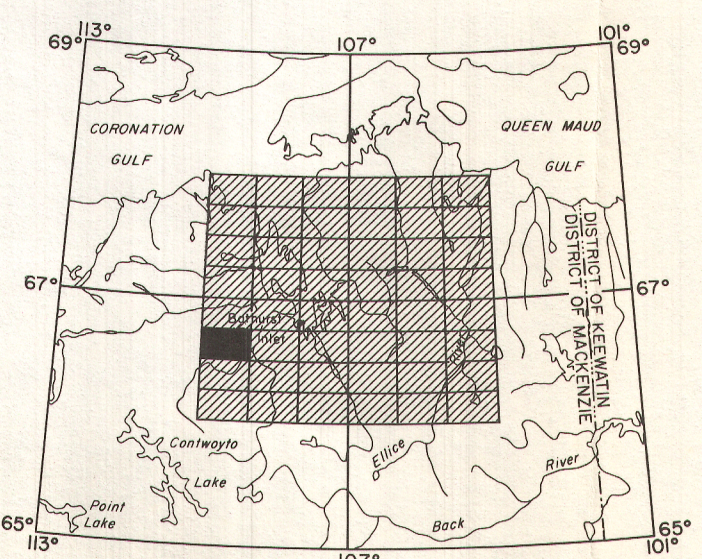
The planimetry for this map was obtained from
topographical map sheets published by the
Department of Energy, Mines and Resources, Ottawa.

The magnetic data on this map were compiled from information recorded along the flight lines shown. The anomalies expressed by the magnetic contours are dependent on the variable magnetic intensities of the underlying rocks, and may be due to conditions near, or at unknown depths below the surface. High magnetic anomalies normally indicate the presence of basic rocks, such as diabase, gabbro, or serpentinite, which have a relatively high iron content, but in special instances may be due, or partly due, to concentrations of magnetic minerals. By means of the magnetic anomalies, various rock bodies or structural features, such as faults or folds, may be traced into, or across, areas of low or no outcrops. In many instances, however, no interpretation of particular anomalies may be possible without further geological information.

GEOPHYSICS PAPER 3634

NORTHWEST TERRITORIES

SHEET 76^K₁₁ AND 76^K₁₂



INDEX MAP

ISOMAGNETIC LINES (absolute total field)

- 500 gammas
- 100 gammas
- 20 gammas
- 10 gammas
- Magnetic depression

- Flight lines
- Flight altitude 1000 feet above ground level

PUBLISHED 1968