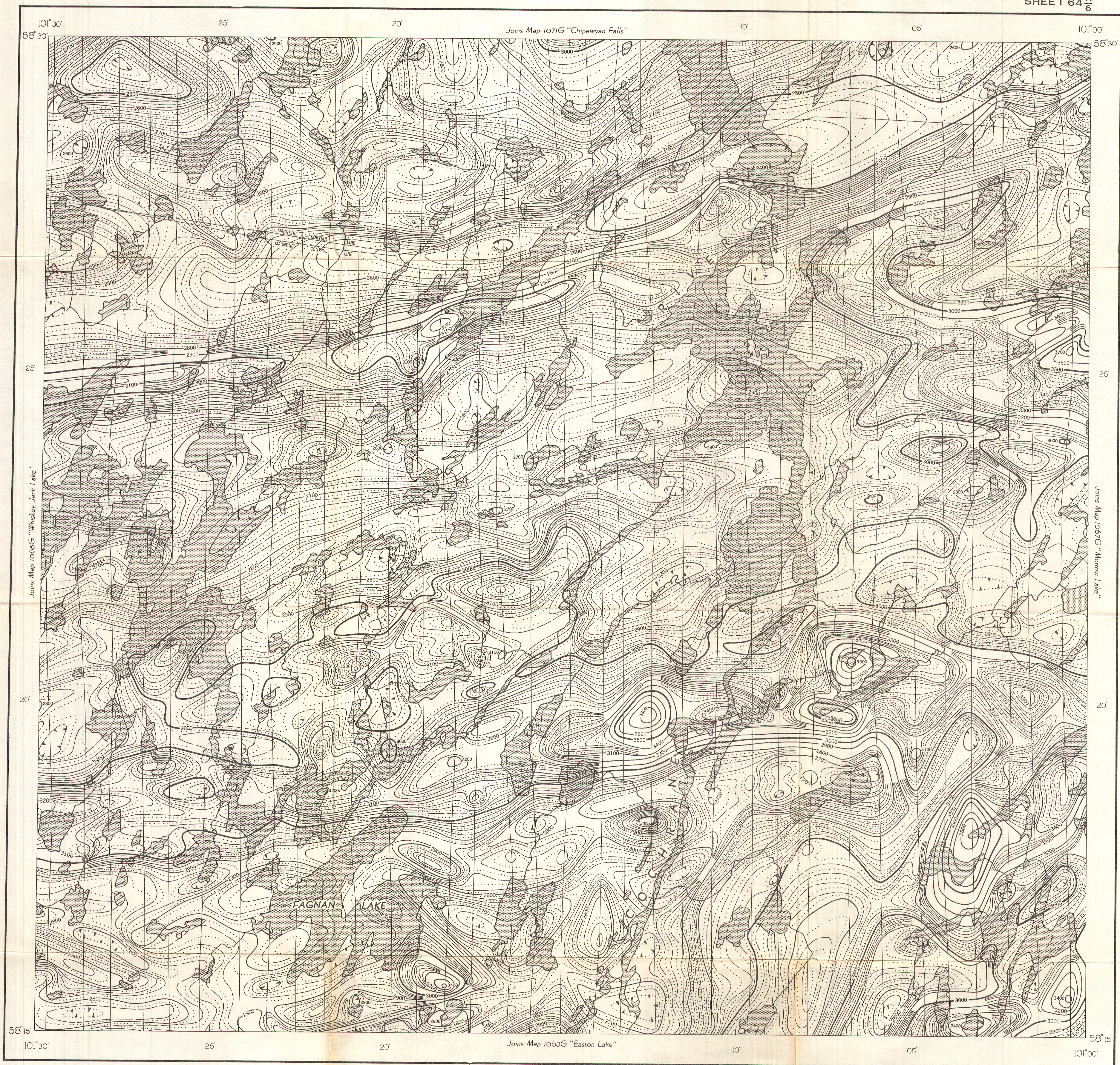


GEOLOGICAL SURVEY OF CANADA
DEPARTMENT OF MINES AND TECHNICAL SURVEYS

AEROMAGNETIC SERIES

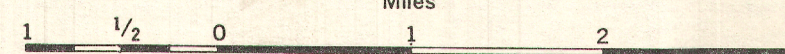
SHEET 64 ^K/₆



MAP 1066 G

FAGNAN LAKE MANITOBA

Scale: One Inch to One Mile = $\frac{1}{63,360}$
Miles



Air photographs covering this map-area may be obtained through the National Air Photographic Library, Topographical Survey, Ottawa, Ontario.

ISOMAGNETIC LINES (total field)

- 500 gammas
- 100 gammas
- 20 gammas
- 10 gammas
- Magnetic depression
- Flight lines
- Flight altitude: 1000 feet above ground level.

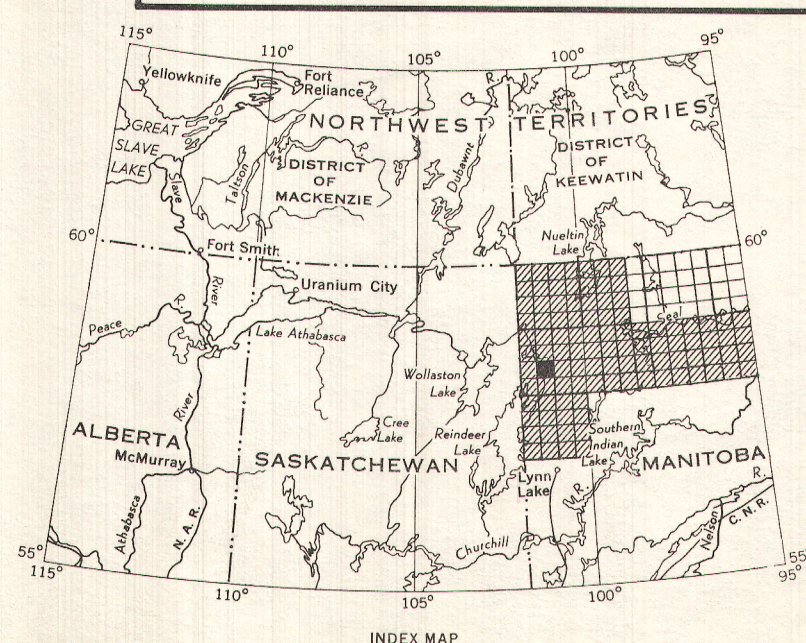
Magnetic Survey, June to August 1957, by
Geophysics Division, Geological Survey of Canada,
Department of Mines and Technical Surveys.

No correction has been made for regional variation.

The planimetry for this map was obtained
from the topographical map sheet, published at a
scale of one inch to four miles.

The magnetic data on this map were compiled from information recorded along the flight lines shown. The anomalies expressed by the magnetic contours are dependent on the variable magnetic intensities of the underlying rocks, and may be due to conditions near, or at unknown depths below the surface. High magnetic anomalies normally indicate the presence of basic rocks, such as diabase, gabbro, or serpentine, which have a relatively high iron content, but in special instances may be due, or partly due, to concentrations of magnetic ore minerals. By means of the magnetic anomalies, various rock bodies or structural features, such as faults or folds, may be traced into, or across, areas of few or no outcrops. In many instances, however, no interpretation of particular anomalies may be possible.

GEOPHYSICS PAPER 1066
FAGNAN LAKE
MANITOBA
SHEET 64 ^K/₆



INDEX MAP