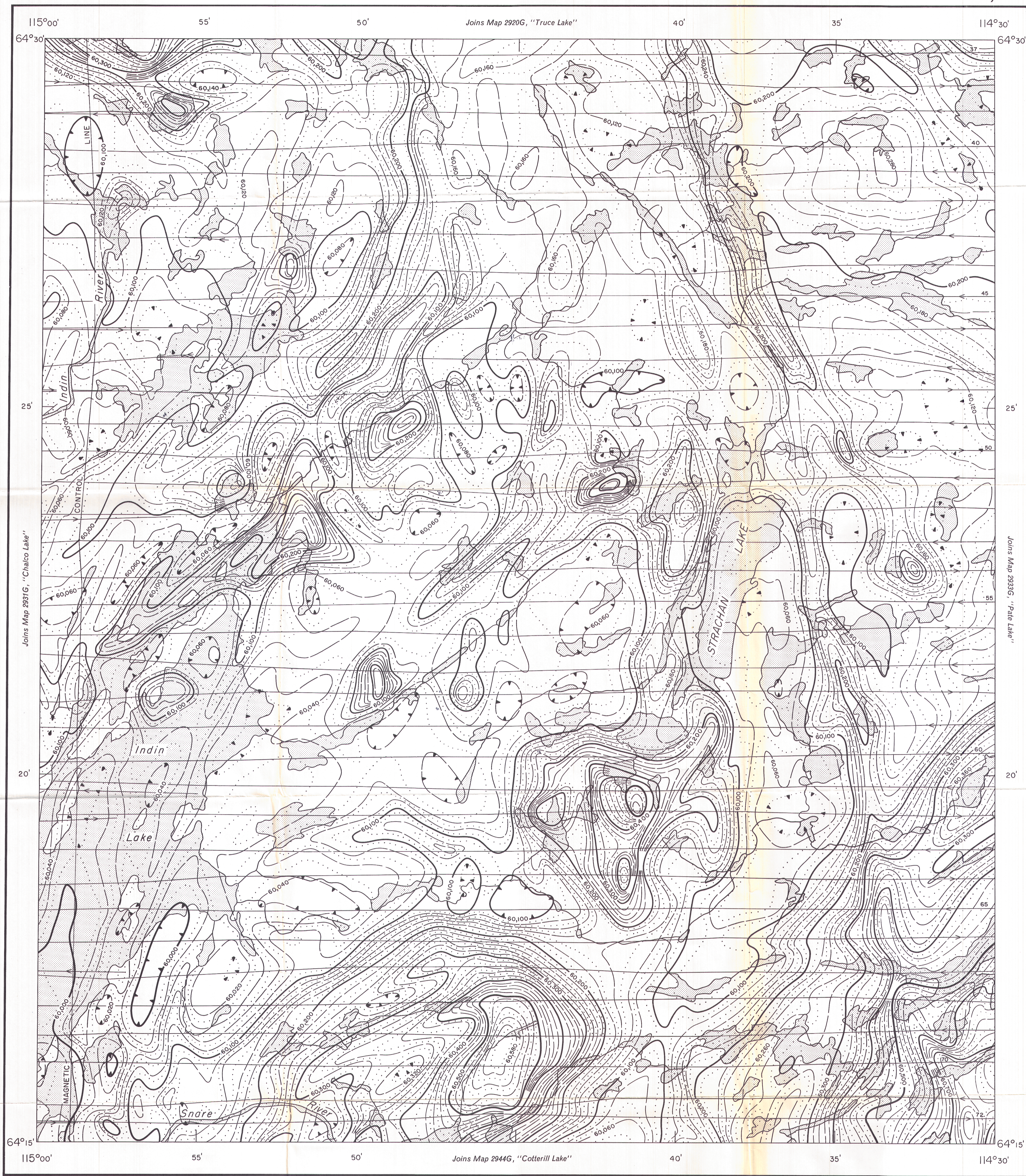


2932

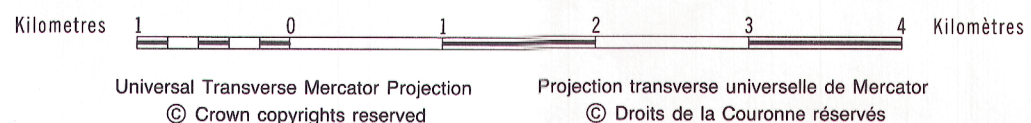


MAP 2932 G

# STRACHAN LAKE

DISTRICT OF MACKENZIE  
NORTHWEST TERRITORIES

Scale 1:50 000 - Échelle 1/50 000



Air photographs covering this map-area may be obtained through the National Air Photographic Library, Topographical Survey, Ottawa, Ontario.

ISOMAGNETIC LINES (absolute total field)

- 500 gammas .....
- 100 gammas .....
- 20 gammas .....
- 10 gammas .....
- Magnetic depression .....

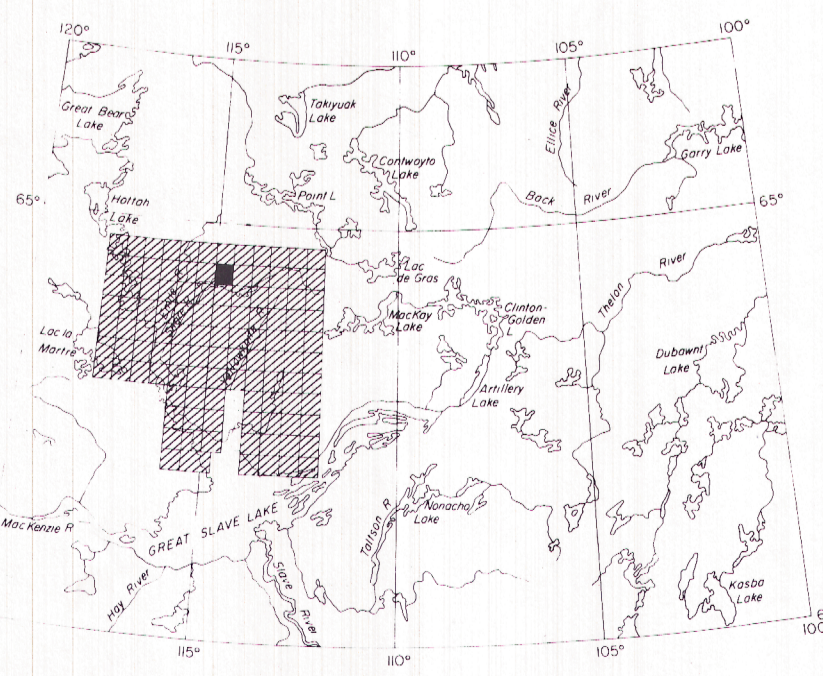
Flight lines .....  
Flight altitude 1000 feet above ground level

Airborne Magnetic Survey, June to September, 1962  
by Spartan Air Services Ltd.

No correction has been made for regional variation.

The planimetry for this map was obtained from  
topographical map sheets published by the  
Department of Mines and Technical Surveys

The magnetic data on this map were compiled from information recorded along the flight lines shown. The anomalies expressed by the magnetic contours are dependent on the variable magnetic intensities of the underlying rocks, and may be due to conditions near, or at unknown depths below the surface. High magnetic anomalies normally indicate the presence of basic rocks, such as diabase, gabbro, or serpentine, which have a relatively high iron content, but in special instances may be due, or partly due, to concentrations of magnetic ore minerals. By means of the magnetic anomalies, various rock bodies or structural features, such as faults or folds, may be traced into, or across, areas of few or no outcrops. In many instances, however, no interpretation of particular anomalies may be possible without further geological information.



INDEX MAP