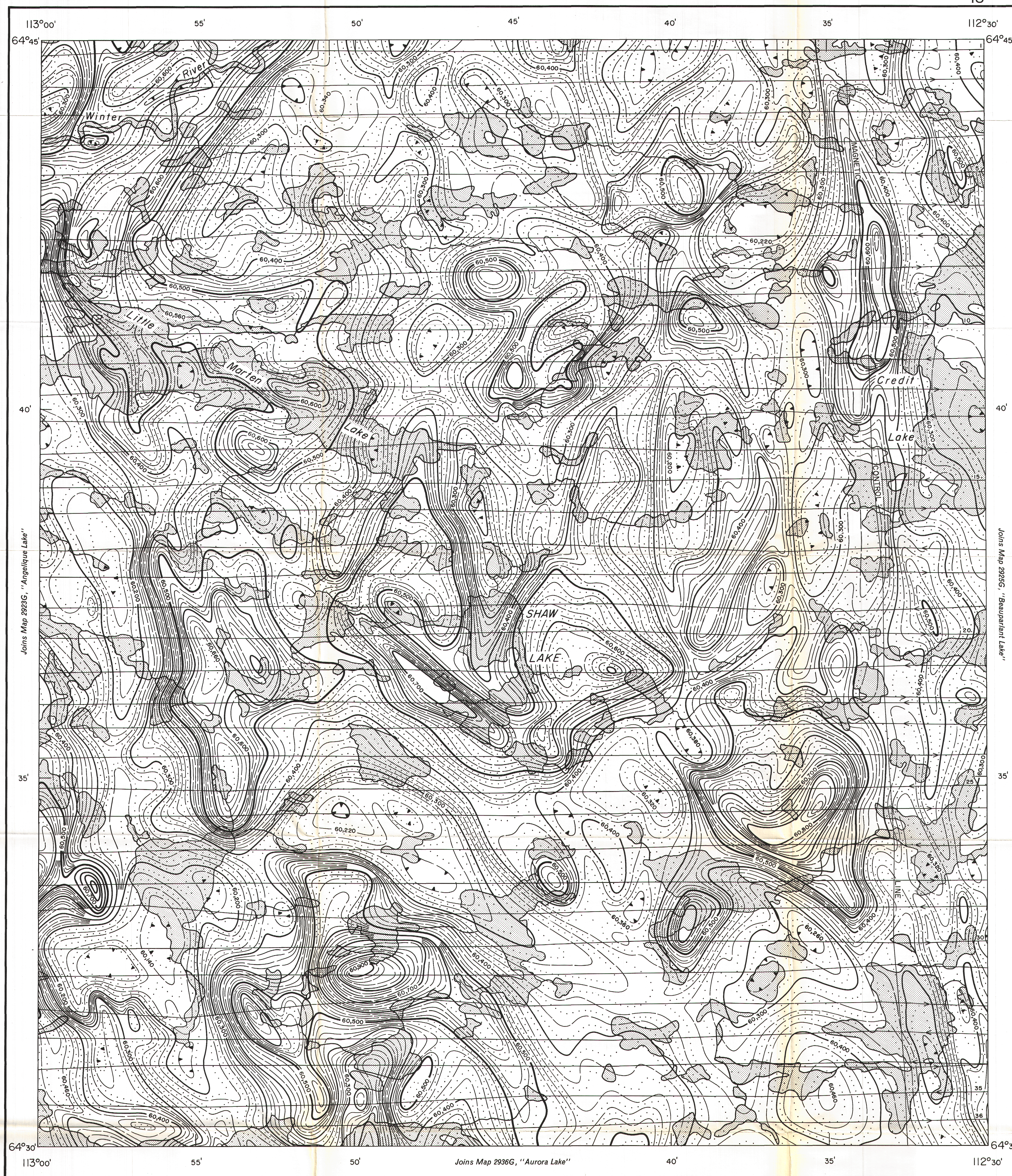


GEOLOGICAL SURVEY OF CANADA
DEPARTMENT OF MINES AND TECHNICAL SURVEYS

AEROMAGNETIC SERIES

SHEET 86 ^A/₁₀



MAP 2924 G

SHAW LAKE

DISTRICT OF MACKENZIE
NORTHWEST TERRITORIES

Scale 1:50 000 - Échelle 1/50 000

Kilometres 0 1 2 3 4 Kilomètres
Universal Transverse Mercator Projection Projection transverse universelle de Mercator
© Crown copyrights reserved © Droits de la Couronne réservés

Air photographs covering this map-area may be obtained through the National Air Photographic Library, Topographical Survey, Ottawa, Ontario.

ISOMAGNETIC LINES (absolute total field)

500 gammas
100 gammas
20 gammas
10 gammas
Magnetic depression
Flight lines
Flight altitude 1000 feet above ground level

Airborne Magnetic Survey, June to September, 1962
by Spartan Air Services Ltd.

No correction has been made for regional variation.

The planimetry for this map was obtained from
topographical map sheets published by the
Department of Mines and Technical Surveys.

The magnetic data on this map were compiled from information recorded along the flight lines shown. The anomalies expressed by the magnetic contours are dependent on the variable magnetic intensities of the underlying rocks, and may be due to conditions near, or at unknown depths below the surface. High magnetic anomalies normally indicate the presence of basic rocks, such as diabase, gabbro, or serpentine, which have a relatively high iron content, but in special instances may be due, or partly due, to concentrations of magnetic ore minerals. By means of the magnetic anomalies, various rock bodies or structural features, such as faults or folds, may be traced into, or across, areas of few or no outcrops. In many instances, however, no interpretation of particular anomalies may be possible without further geological information.

GEOPHYSICS PAPER 2924
SHAW LAKE
NORTHWEST TERRITORIES
SHEET 86 ^A/₁₀

