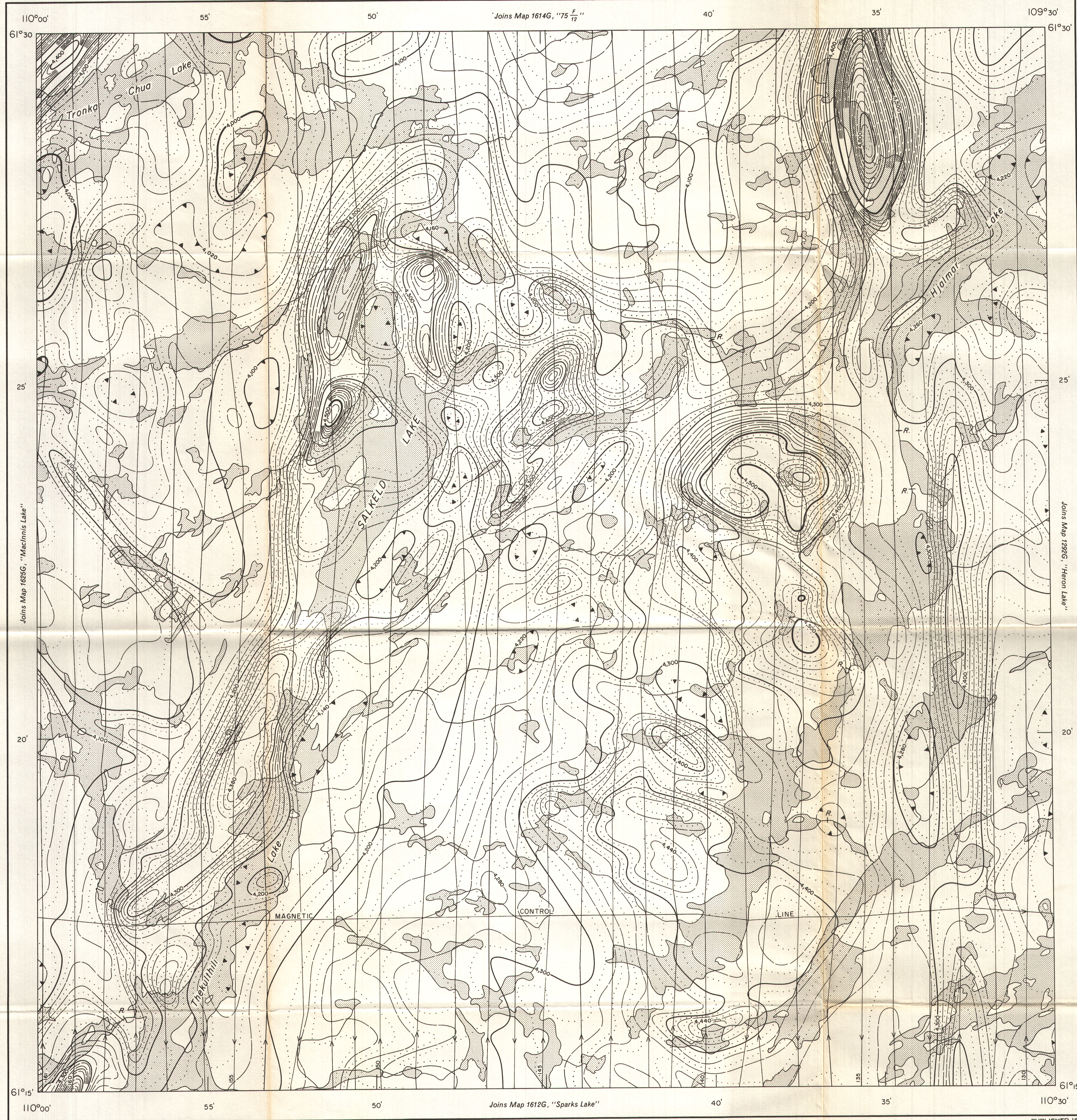


GEOLOGICAL SURVEY OF CANADA  
DEPARTMENT OF MINES AND TECHNICAL SURVEYS

AEROMAGNETIC SERIES

SHEET 75  $\frac{F}{5}$

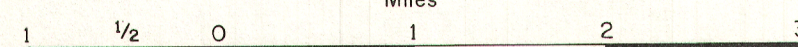


MAP 1613G

## SALKELD LAKE

DISTRICT OF MACKENZIE  
NORTHWEST TERRITORIES

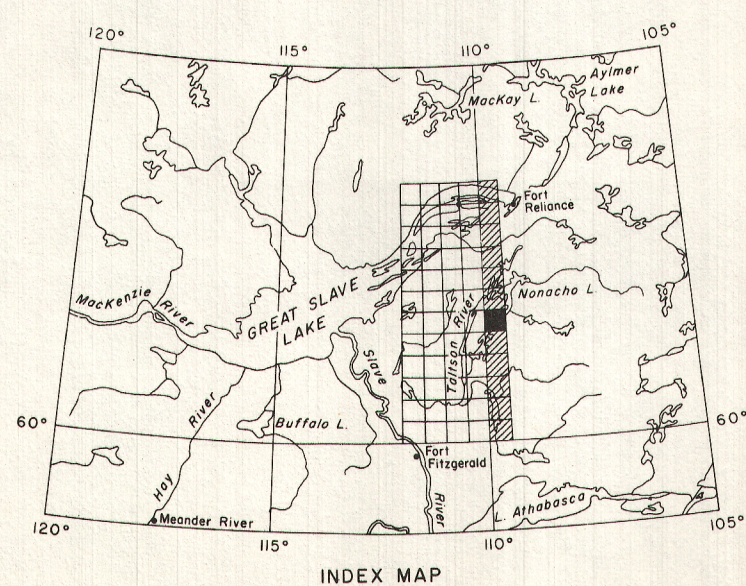
Scale: One Inch = One Mile =  $\frac{1}{63,360}$  Miles



Air photographs covering this map-area may be obtained through the National Air Photographic Library, Topographical Survey, Ottawa, Ontario.

ISOMAGNETIC LINES      total field

500 gammas .....  
100 gammas .....  
20 gammas .....  
10 gammas .....  
Magnetic depression .....  
Flight lines .....  
Flight altitude 1000 feet above ground level



The magnetic data on this map were compiled from information recorded along the flight lines shown. The anomalies expressed by the magnetic contours are dependent on the variable magnetic intensities of the underlying rocks, and may be due to conditions near, or at unknown depths below the surface. High magnetic anomalies normally indicate the presence of basic rocks, such as diabase, gabbro, or serpentinite, which have a relatively high iron content, but in special instances may be due, or partly due, to concentrations of magnetic minerals. By means of the magnetic anomalies, various rock bodies or structural features, such as faults or folds, may be traced into, or across, areas of few or no outcrops. In many instances, however, no interpretation of particular anomalies may be possible without further geological information.

GEOPHYSICS PAPER 1613  
SALKELD LAKE  
NORTHWEST TERRITORIES  
SHEET 75  $\frac{F}{5}$