

This map has been reprinted from a scanned version of the original map. Reproduction par numérisation d'une carte sur papier.

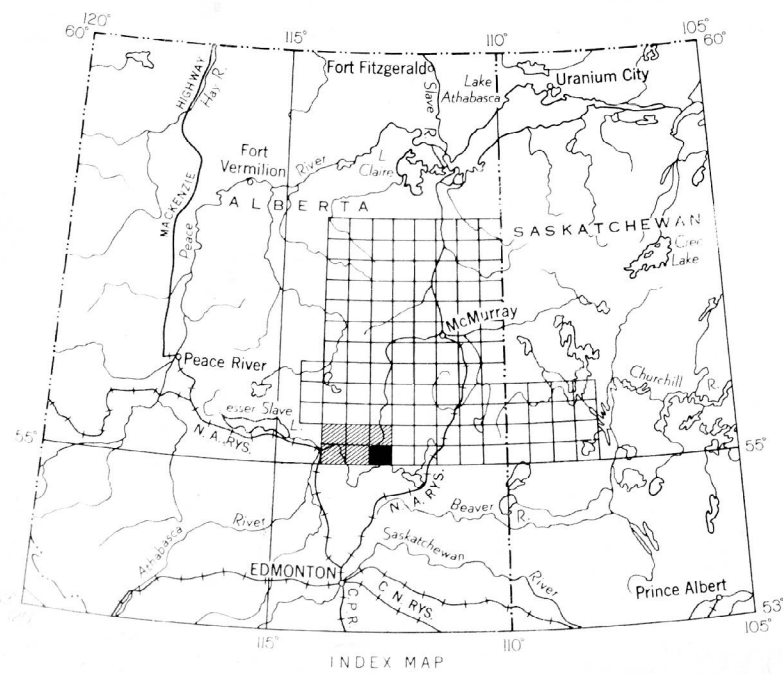
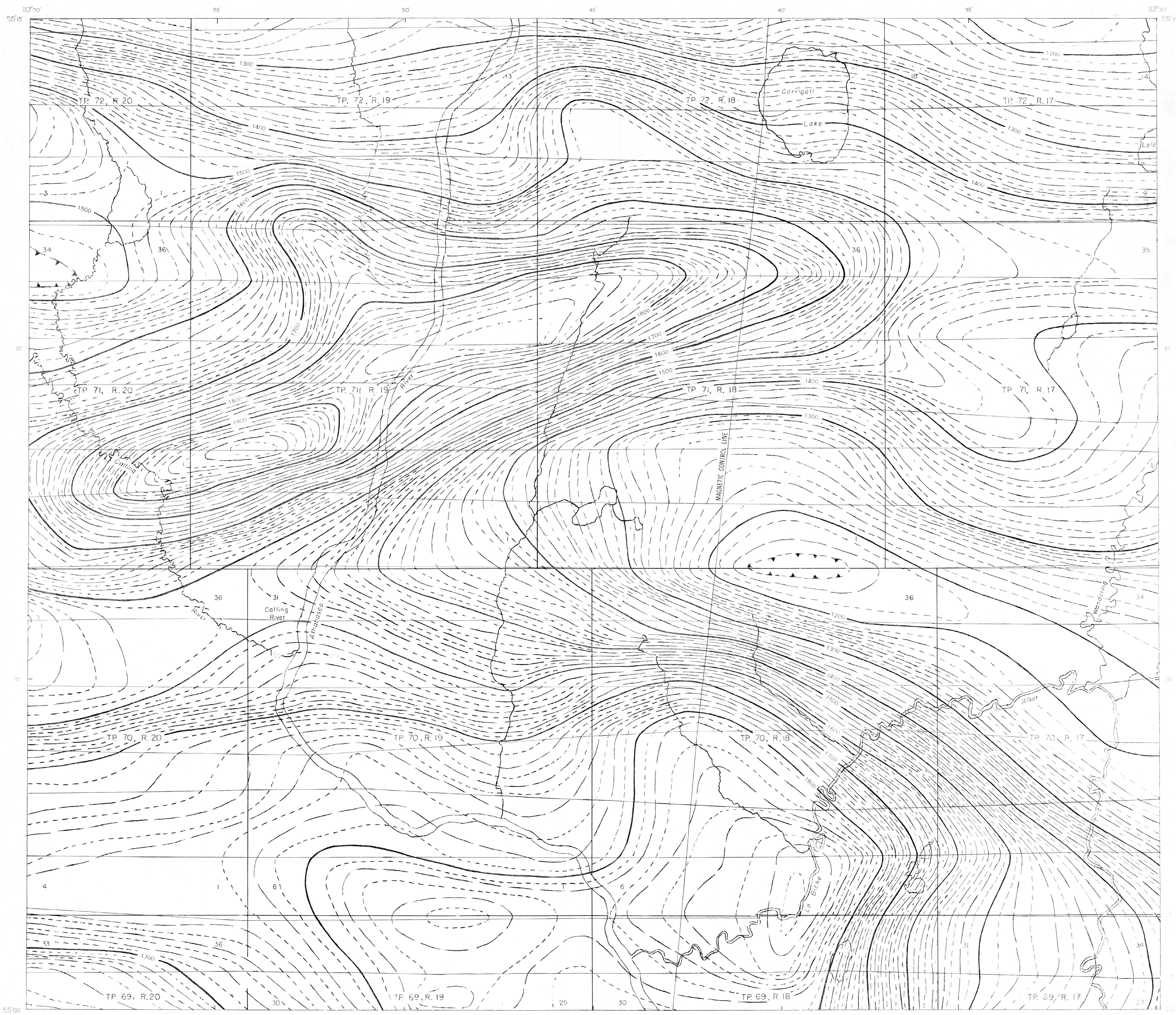


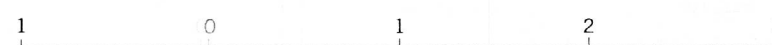
DIAGRAM OF TOWNSHIP
SHOWING NUMBERING OF SECTIONS

31	32	33	34	35	36
30	29	28	27	26	25
19	20	21	22	23	24
18	17	16	15	14	13
7	8	9	10	11	12
6	5	4	3	2	1

Township boundary, surveyed
Township boundary, unsurveyed

MAP 246G
ADVANCE EDITION
CORRIGALL LAKE
WEST OF FOURTH MERIDIAN
ALBERTA

Scale: One Inch to One Mile = $\frac{1}{63,360}$
Miles



Air photographs covering this map area may be obtained through the National Air Photographic Library, Topographical Survey, Ottawa, Ontario.

ISOMAGNETIC LINES (total field)

- 500 gammas
- 100 gammas
- 20 gammas
- 10 gammas
- Magnetic depression

Flight line and plotting reference number e.g. 79 80
Flight altitude: 1000 feet above ground level

No correction has been made for regional variation; this increases at the rate of 0.5 gammas per mile from north to south and 2.8 gammas per mile from west to east.

The magnetic data on this map were compiled from information recorded along the flight lines shown. The anomalies expressed by the magnetic contours are dependent on variations in the magnetic intensities of the basement rocks as recorded at the flight altitude. These variations are, for the most part, due to changes in the composition of the rocks making up the basement, but in some instances may be due to changes in altitude of the basement. Strong anomalies are probably due to an increase in magnetite content in the rocks, but small anomalies may be due to either of the above causes.

Magnetic Survey, June to September, 1952, by
Geophysics Division, Geological Survey of Canada,
Department of Mines and Technical Surveys.