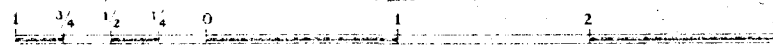


MAP 161G

ARTHABASKA
MEGANTIC, ARTHABASKA AND WOLFE COUNTIES
QUEBEC

Scale: One Inch to One Mile = 63,360
Miles



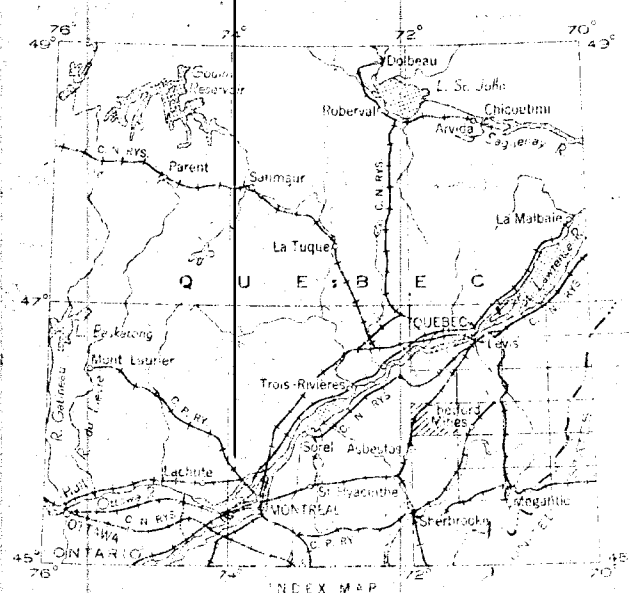
An photocopy of this map may be obtained through the National Air Photographic Library, Topographic Survey, Ottawa, Ontario.

Aeroborne Magnetic Survey, November 1951 and April 1952, by Geophysics Section, Geological Survey of Canada, Department of Mines and Technical Surveys.

No correction has been made for regional variation.

This map has been reprinted from a scanned version of the original map
Reproduction par numérisation d'une carte sur papier

The magnetic data on this map were compiled from information recorded along the flight lines shown. Disturbances exist in the magnetic field and are dependent on the variable magnetic intensities of the underlying rocks and may be due to conditions near or at unknown depths below the surface. High magnetic anomalies normally indicate the presence of low magnetic intensity gabbro, or seipite, which have a relatively high iron content. In some special instances may be due, or partly due, to concentrations of magnetic minerals. By means of the magnetic anomalies, contour lines, or structural features, such as faults or folds, may be traced. The interpretation of magnetic anomalies may be possible without further geological information.



- Magnetic lines (total field)
- 500 gammaes
- 100 gammaes
- 20 gammaes
- 0 gammaes
- Magnetic depression contours
- Flight line
- Flight altitude - 500 feet above ground level