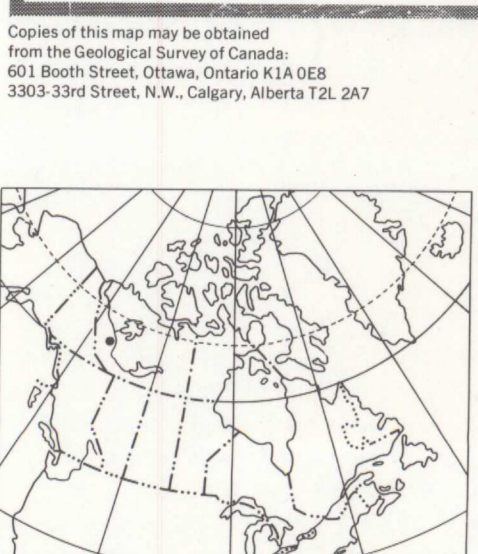
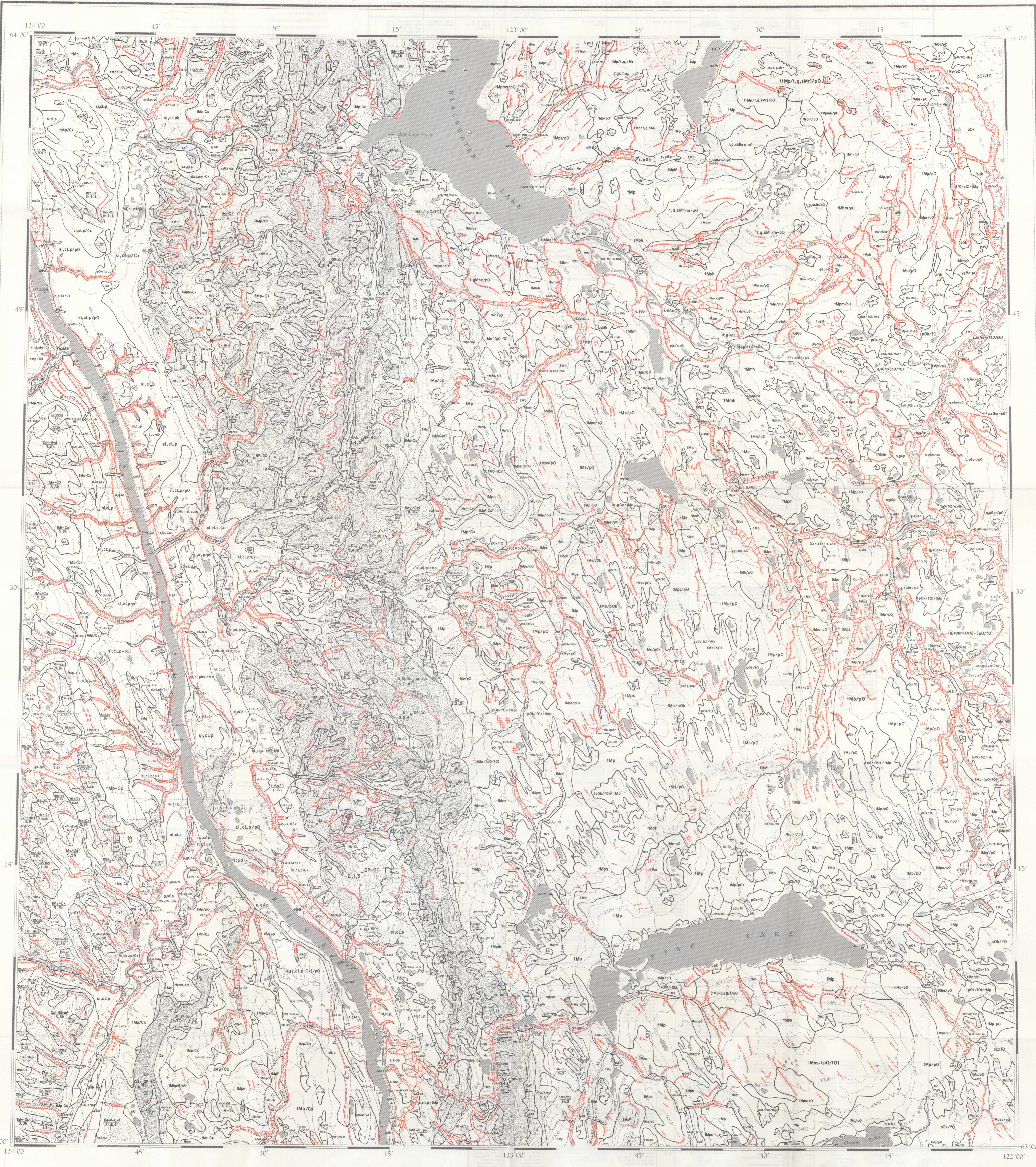




GEOLOGICAL SURVEY OF CANADA
DEPARTMENT OF ENERGY, MINES AND TECHNICAL SURVEYS

MAP 13-1978



Surficial geology by H.K. Rutter and A.M. Boydell, 1972
Bedrock geology after R.J.K. Douglas and D.K. Norris, 1962
Final compilation by R.J. Hawes, 1976
Thematic information on this map is, in part, reproduced directly from author's copy
Any revisions or additional geological information known to the user would be welcomed by the Geological Survey of Canada

MAP 13-1978
SURFICIAL GEOLOGY AND GEOMORPHOLOGY
WRIGLEY LAKE
DISTRICT OF MACKENZIE
Scale 1:125,000
Kilometers 0 1 2 3 4 5
Miles 0 1 2 3 4 5
Universal Transverse Mercator Projection
© Crown Copyrights reserved

Library / Bibliothèque
G340-C5
1978-
G4
Omufc

Base map at the scale of 1:250,000 published by the Surveys and Mapping Branch in 1959
Geographical names subject to revision
Elevations in feet above mean sea level
Mean magnetic declination 1979, 35°29.7' east, decreasing 6.5' annually, readings vary from 34°54.0' in the SE corner to 34°07.8' in the NW corner of the map area

LIBRARY / BIBLIOTHÈQUE
MAR 3 1981
GEOLOGICAL SURVEY
COMMISSION GÉOLOGIQUE

