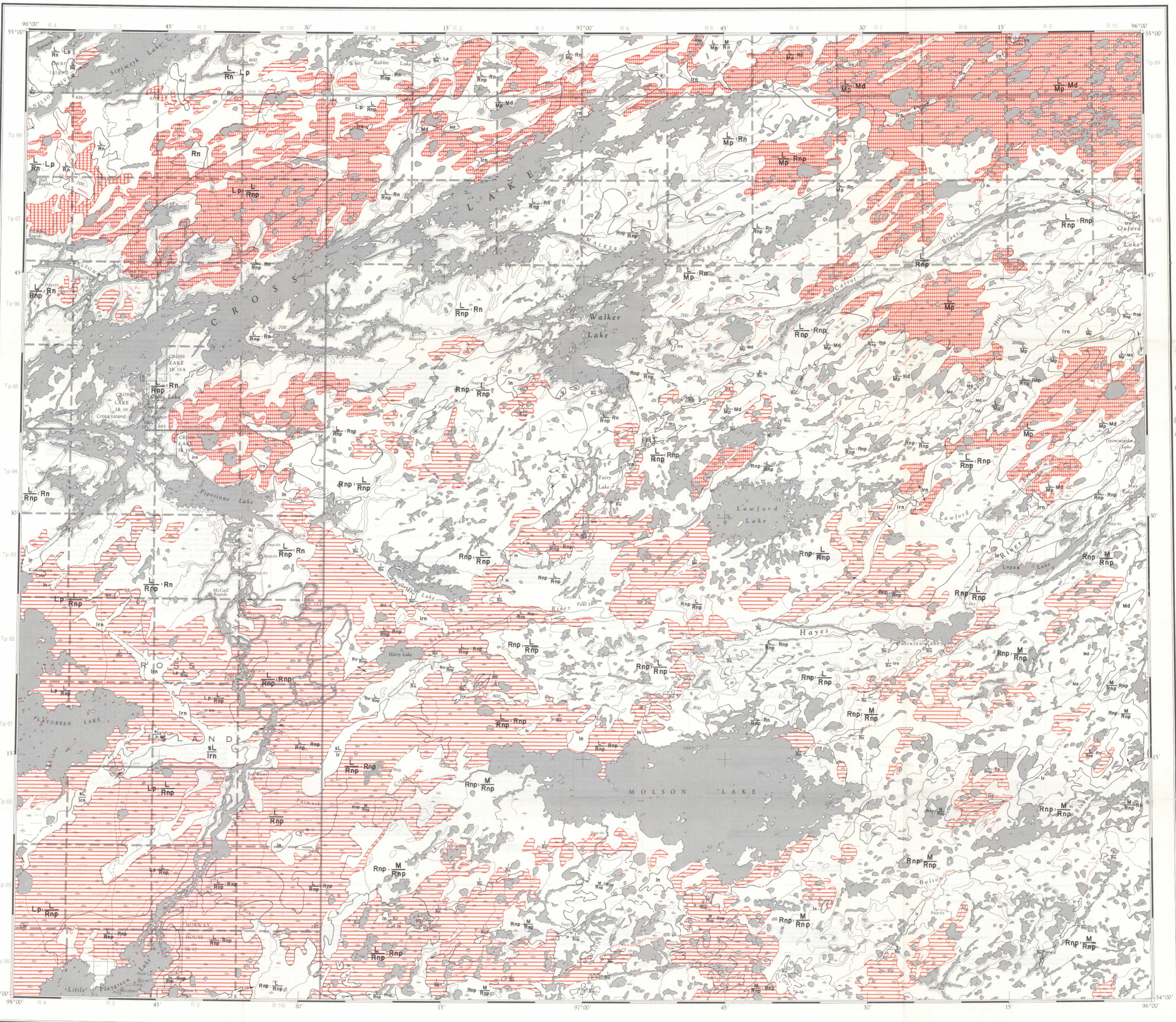




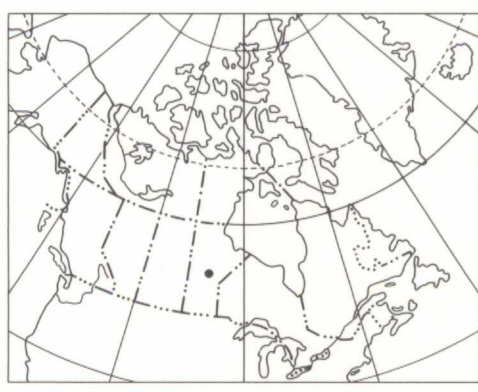
GEOLOGICAL SURVEY OF CANADA
DEPARTMENT OF ENERGY, MINES AND RESOURCES



5-1979
G3401-C5
1978-
G4
omufe

Copies of this map may be obtained from the Geological Survey of Canada: 601 Booth Street, Ottawa, Ontario K1A 0E8 3303 - 33rd Street, N.W., Calgary, Alberta T2L 2A7

Printed by the Surveys and Mapping Branch, 1980



Geology by R.W. Klassen and J.A. Netterville, 1973

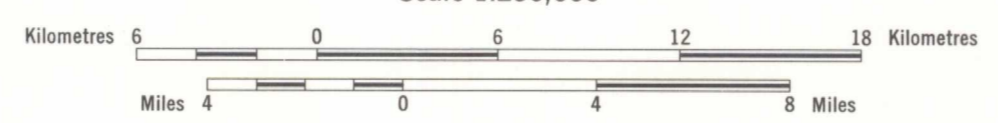
Thematic information on this map is, in part, reproduced directly from author's copy

Any revisions or additional geological information known to the user would be welcomed by the Geological Survey of Canada

Base map at the same scale published by the Surveys and Mapping Branch in 1965

MAP 5-1979
SURFICIAL GEOLOGY
CROSS LAKE
MANITOBA

Scale 1:250,000

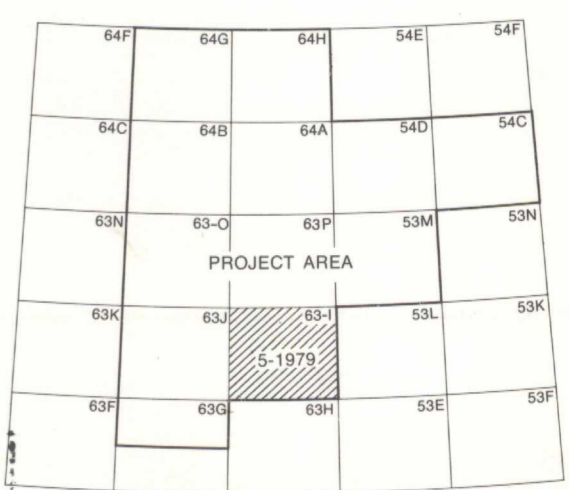


Universal Transverse Mercator Projection
© Crown Copyrights reserved

Copies of the topographical edition of this map may be obtained from the Canada Map Office, Department of Energy, Mines and Resources, Ottawa, K1A 0E9

Mean magnetic declination 1980, 7°56.4' East, decreasing 13.9' annually. Readings vary from 5°15' in the SE corner to 10°03' in the NW corner of the map area

Elevations in feet above mean sea level



LIBRARY / BIBLIOTHÈQUE
JAN 27 1981
GEOLOGICAL SURVEY
COMMISSION GÉOLOGIQUE

MAP 5-1979
CROSS LAKE
MANITOBA