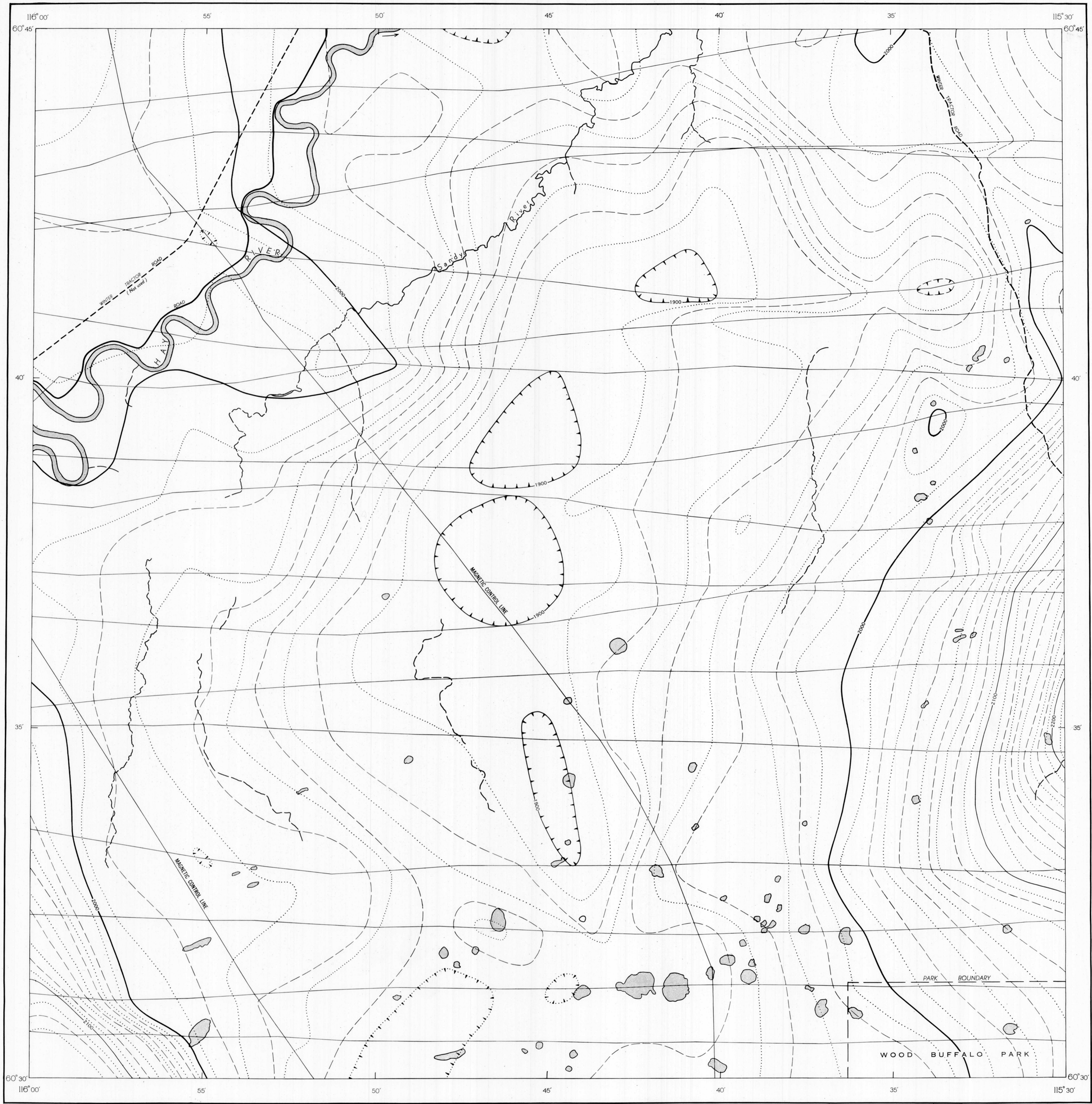


AEROMAGNETIC SERIES



PUBLISHED, 1952

MAP 77 G

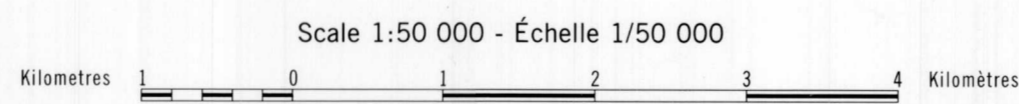
**SANDY RIVER**  
 DISTRICT OF MACKENZIE  
 NORTHWEST TERRITORIES

Magnetic Survey, August, 1950, by Geophysics Section, Geological Survey of Canada, Department of Mines and Technical Surveys.

No correction has been made for regional variation; this increases at the rate of 2.5 gammas per mile from west to east and 4.0 gammas per mile from north to south.

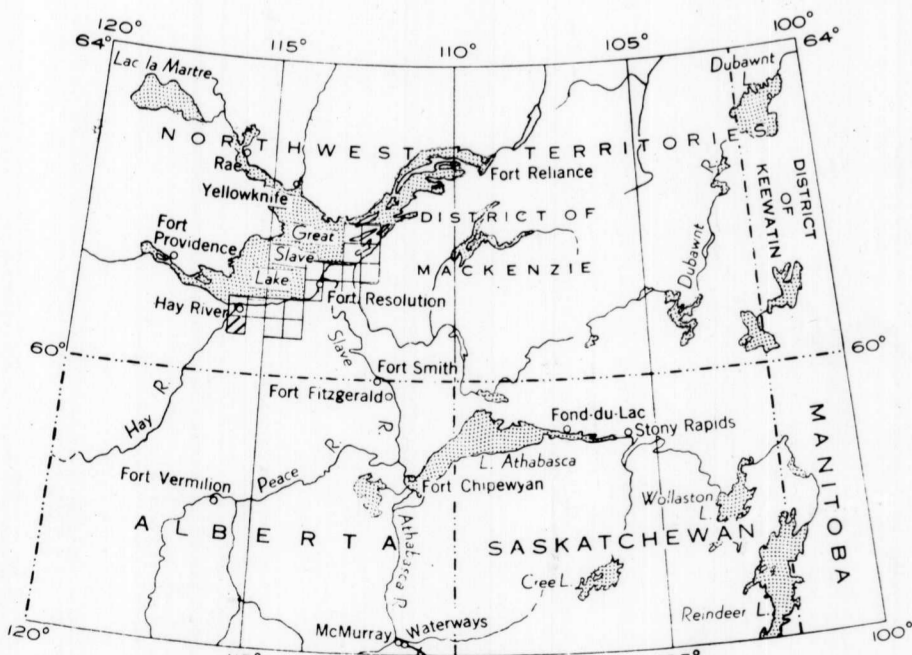
The magnetic data on this map were compiled from information recorded along the flight lines shown. The anomalies expressed by the magnetic contours are dependent on variations in the magnetic intensities of the basement rocks as recorded at the flight altitude. These variations are, for the most part, due to changes in the composition of the rocks making up the basement, but in some instances may be due to changes in altitude of the basement. Strong anomalies are probably due to an increased magnetite content in the rocks, but small anomalies may be due to either of the above causes.

- Isomagnetic lines (total field)
- 500 gammas .....
- 100 gammas .....
- 20 gammas .....
- 10 gammas .....
- Magnetic depression contour .....
- Flight line .....
- Flight altitude: 1,000 feet above ground level



Universal Transverse Mercator Projection  
 © Crown copyrights reserved

Projection transverse universelle de Mercator  
 © Droits de la Couronne réservés



INDEX MAP