

- LEGEND**
- Q No information is available on the rock formations underlying these Quaternary deposits
 - ORDOVICIAN**
 - 19 QUEENSTON FORMATION: red shale
 - 18 CARLSBAD FORMATION: grey shale, sandy shale, some dolomitic layers
 - 17 BILLINGS FORMATION: black shale with some brown shale
 - 16 EASTVIEW FORMATION: dark grey almost black limestone
 - 15 OTTAWA FORMATION: limestone with some shaly partings: some sandstone in basal part
 - 14 ST. MARTIN FORMATION: shale, sandstone, impure limestone, dolomite
 - 13 ROCKCLIFFE FORMATION: shale with lenses of sandstone
 - 12 OXFORD FORMATION: dolomite and limestone
 - 11 MARCH FORMATION: interbedded sandstone and sandy dolomite
 - ORDOVICIAN OR CAMBRIAN**
 - 10 NEPEAN FORMATION: sandstone
 - PRECAMBRIAN**
 - 9 Granite, quartz, monzonite, granodiorite, tonalite, massive and foliated, also associated migmatite
 - 8 Syenite, monzonite, massive and foliated
 - 7 Pegmatite, white pegmatite associated with marble
 - 6 Diorite, gabbro, anorthosite, metagabbro
 - 5 Marble, lime silicate rocks, interbedded amphibolite, skarn
 - 4 Amphibolite, greenschist, associated migmatite, in places garnetiferous (includes probable mafic metavolcanics)
 - 3 Paragneiss, pelitic and psammopelitic schists and gneisses (includes some layered amphibolite of uncertain origin)
 - 2 Quartzite, interlayered paragneiss; quartzose paragneiss
 - 1 Undifferentiated Precambrian

Geological boundary (approximate, assumed)
 Fault (defined, approximate) - - - - -

Geological compilation by G. MacDonald 1967, modified by J.E. Harrison 1976 based on earlier published material

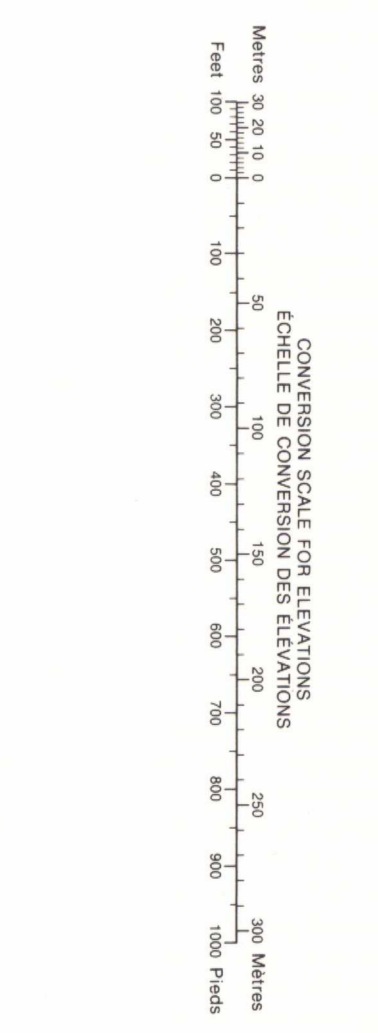
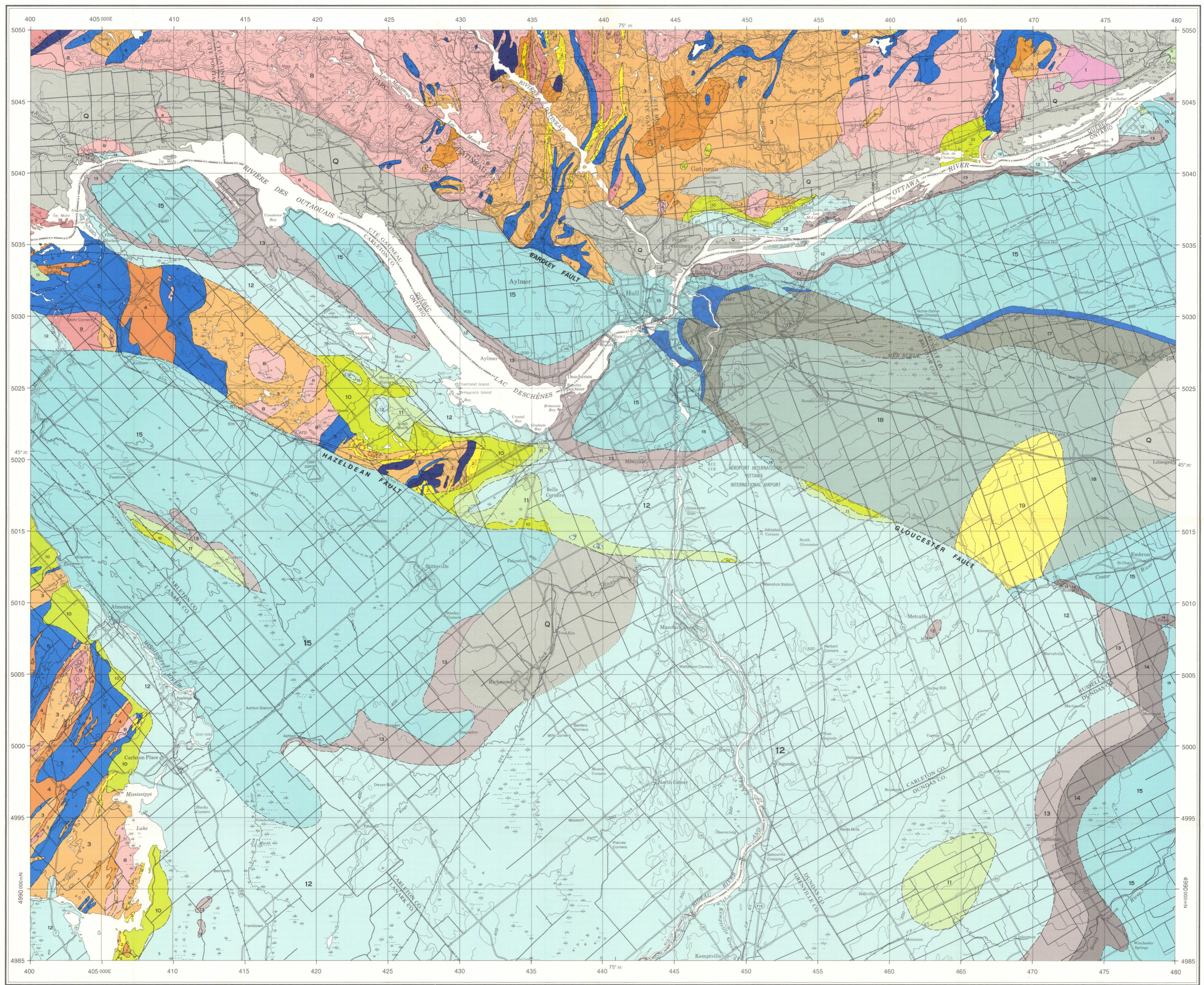
Geological cartography by L.P. Renaud, Geological Survey of Canada

Any revisions or additional geological information known to the user would be welcomed by the Geological Survey of Canada

Base map cartography by the Geological Survey of Canada. Source material derived from parts of published 1:50,000 maps and compilation material of MCR 17 prepared by the Geological Survey of Canada

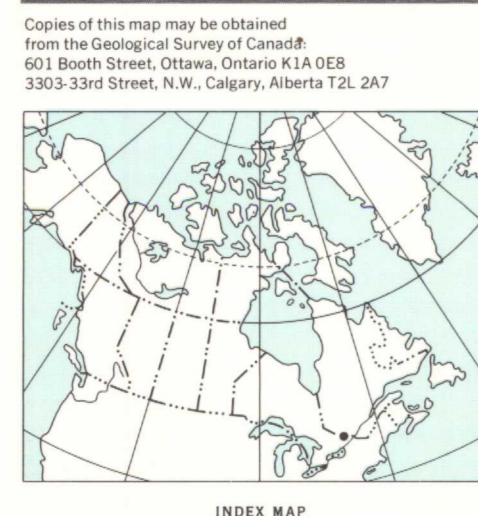
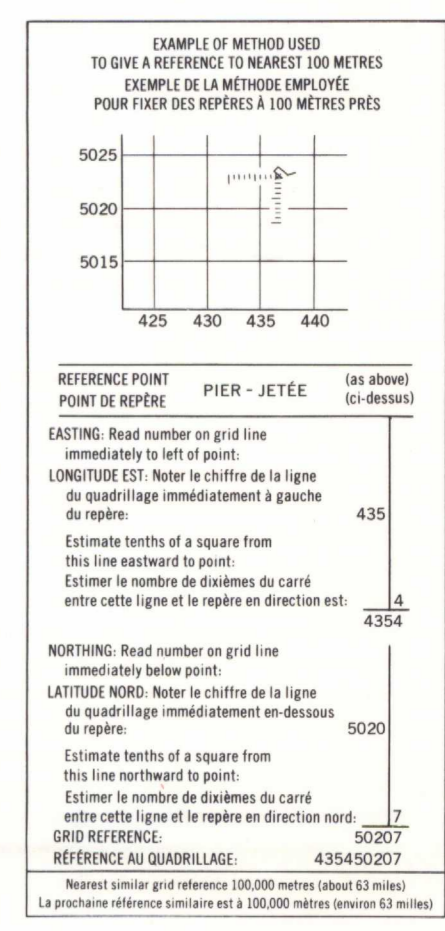
Elevations in feet above mean sea level

Map boundaries are based on the Universal Transverse Mercator Rectangular Grid System



The diagram only to obtain numerical values
 APPROXIMATE MEAN SECSATION 1976
 FOR CORRECTION OF MAP
 Annual change increasing 0.3"
 Utiliser le diagramme que pour obtenir les valeurs numériques
 D'ÉLEVATION MOYENNE APPROXIMATIVE
 AU COURS DE LA CARTE EN 1976
 Variation annuelle croissante 0.3"

FIVE THOUSAND METRE
 UNIVERSAL TRANSVERSE MERCATOR GRID
ZONE 18
QUADRILLAGE DE CINQ MILLE MÈTRES
 TRANSVERSE UNIVERSSEL DE MERCATOR

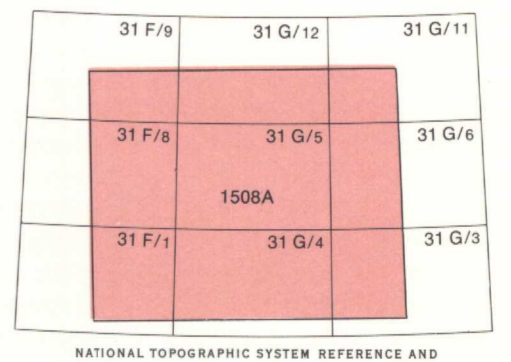


MAP 1508A
GENERALIZED BEDROCK GEOLOGY
OTTAWA - HULL
 ONTARIO AND QUEBEC

Scale 1:125,000

Kilometres 3 0 3 6 9
 Miles 2 0 2 4

Universal Transverse Mercator Projection
 © Crown Copyrights reserved



LIBRARY / BIBLIOTHÈQUE
 MAR 19 1985
 GEOLOGICAL SURVEY
 COMMISSION GÉOLOGIQUE

NOT TO BE TAKEN FROM LIBRARY
 NE PAS SORTIR DE LA BIBLIOTHÈQUE

MAP 1508A
OTTAWA-HULL
 ONTARIO AND QUEBEC

1508A