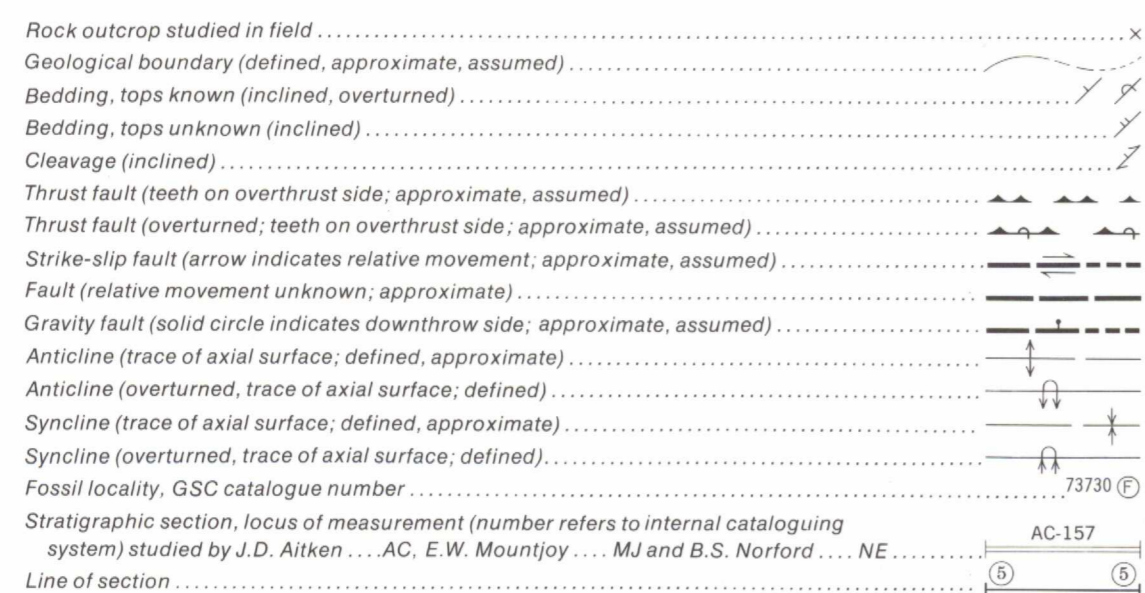
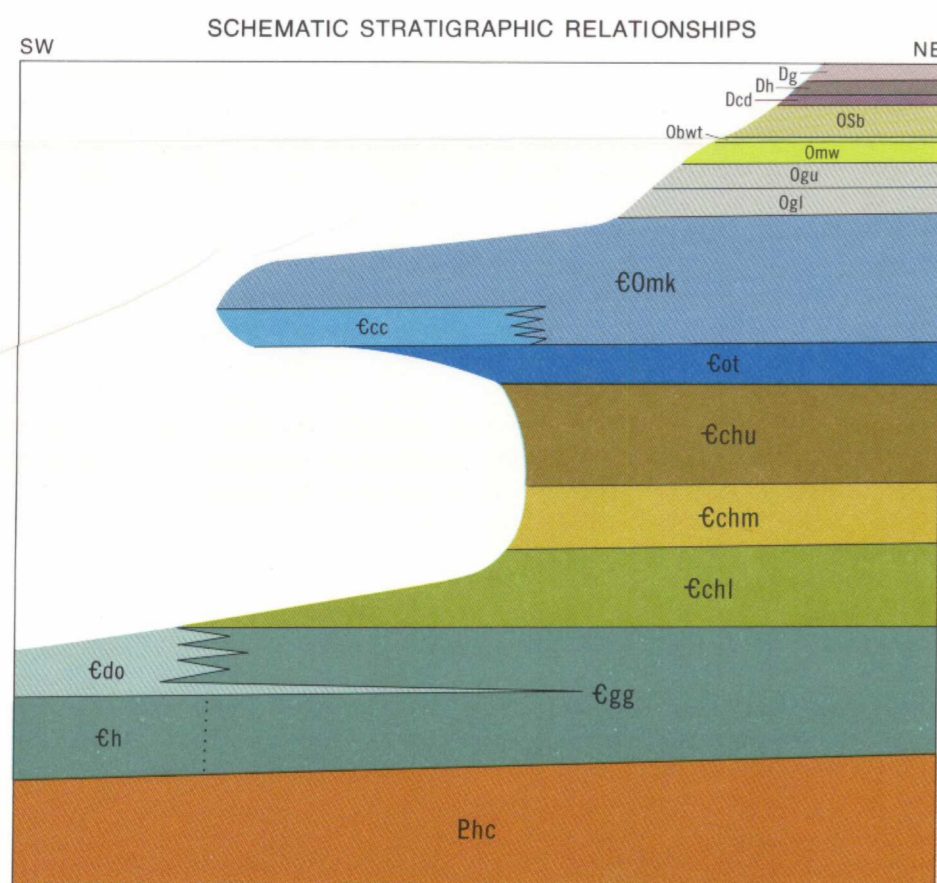


LEGEND

- CENOZOIC**
- QUATERNARY**
PLEISTOCENE AND RECENT
 Qd Till, alluvium, colluvium; gravel, sand, silt (shown only where bedrock is extensively concealed)
- DEVONIAN**
MIDDLE DEVONIAN
 Dg Gypsum, white, coarsely crystalline, massive, partly bedded
 Dh HARROGATE FORMATION: dolomite, dark grey, very finely crystalline; limestone, dark grey, very finely crystalline to microcrystalline, argillaceous and shaly
 Dcd CEDARED FORMATION: dolomite, light grey and light brownish grey, very finely crystalline, partly detrital, sandy (quartz), silty and argillaceous, dolomite quartz sandstone; dolomite breccia
- ORDOVICIAN AND SILURIAN**
UPPER ORDOVICIAN AND LOWER SILURIAN
 OSb BEAVERFOOT FORMATION (upper part): dolomite, dark grey to light brownish grey, finely crystalline to microcrystalline, partly mottled, partly cherty
- ORDOVICIAN**
UPPER ORDOVICIAN
 Obwt BEAVERFOOT FORMATION (Whiskey Trail Member): dolomite, dark grey to olive-grey, argillaceous, very finely crystalline to microcrystalline, platy, recessive
MIDDLE AND/OR UPPER ORDOVICIAN
 Omw MOUNT WILSON FORMATION: quartz sandstone, fine grained, white to medium grey, buff-grey, pinkish grey; crossbedded in part
LOWER AND MIDDLE ORDOVICIAN
 Ogu GLENOGLE FORMATION (upper part): siltstone, sandstone and shale; medium to dark grey-brown
 Ogl GLENOGLE FORMATION (lower part): shale and argillaceous limestone; dark grey to black
- CAMBRIAN AND ORDOVICIAN**
UPPER CAMBRIAN AND LOWER ORDOVICIAN
 €0mk MCKAY GROUP: slate and shale, grey and green, chloritic and calcareous; grey micritic limestone nodules and interbeds, oolitic limestone
- CAMBRIAN**
UPPER CAMBRIAN
 €cc CANYON CREEK FORMATION: slate, grey, finely laminated, partly calcareous, with thin interbeds of limestone locally
 €ot OTTERTAIL FORMATION: in structure section only
 €chu CHANCELLOR FORMATION (upper part): in structure section only
MIDDLE AND UPPER CAMBRIAN
 €chm CHANCELLOR FORMATION (middle part): in structure section only
MIDDLE CAMBRIAN
 €chl CHANCELLOR FORMATION (lower part): in structure section only
- WEST OF PURCELL THRUST FAULT**
- LOWER CAMBRIAN**
 €do DONALD FORMATION: interbedded slate and nodular calcareous slate, grey to brown; siltstone dark brown; and dolomite and limestone, finely crystalline, light to medium grey, thin bedded
 €h HAMILL FORMATION: quartzite and quartzose sandstone, white, grey and red, crossbedded, thick bedded with dark grey to brown silty shales, siltstones and thin bedded sandstones which form a recessive interval in the middle
- UPPER PROTEROZOIC (HADRYNIAN)**
 WINDERMERE SUPERGROUP
 HORSETHIEF CREEK GROUP: Upper part: shales and silty shales, varicoloured with thin interbeds of quartz siltstone and sandstone; limestone and dolomite, microcrystalline, finely laminated, thin- to medium-bedded. Lower part: sandstone and quartz-pebble conglomerate, feldspathic, poorly sorted, gritty; interbedded quartz sandstone and slate, grey to dark grey



Geology by R.A. Price and E.W. Mountjoy based on studies of vertical air photographs and on ground and air observations by J.D. Aitken, H.R. Balkwill, D.B. Cornell, E.W. Mountjoy and R.A. Price (1964-66) and published geological maps



Geological cartography by B.H. Ortmann, Institute of Sedimentary and Petroleum Geology, Geological Survey of Canada

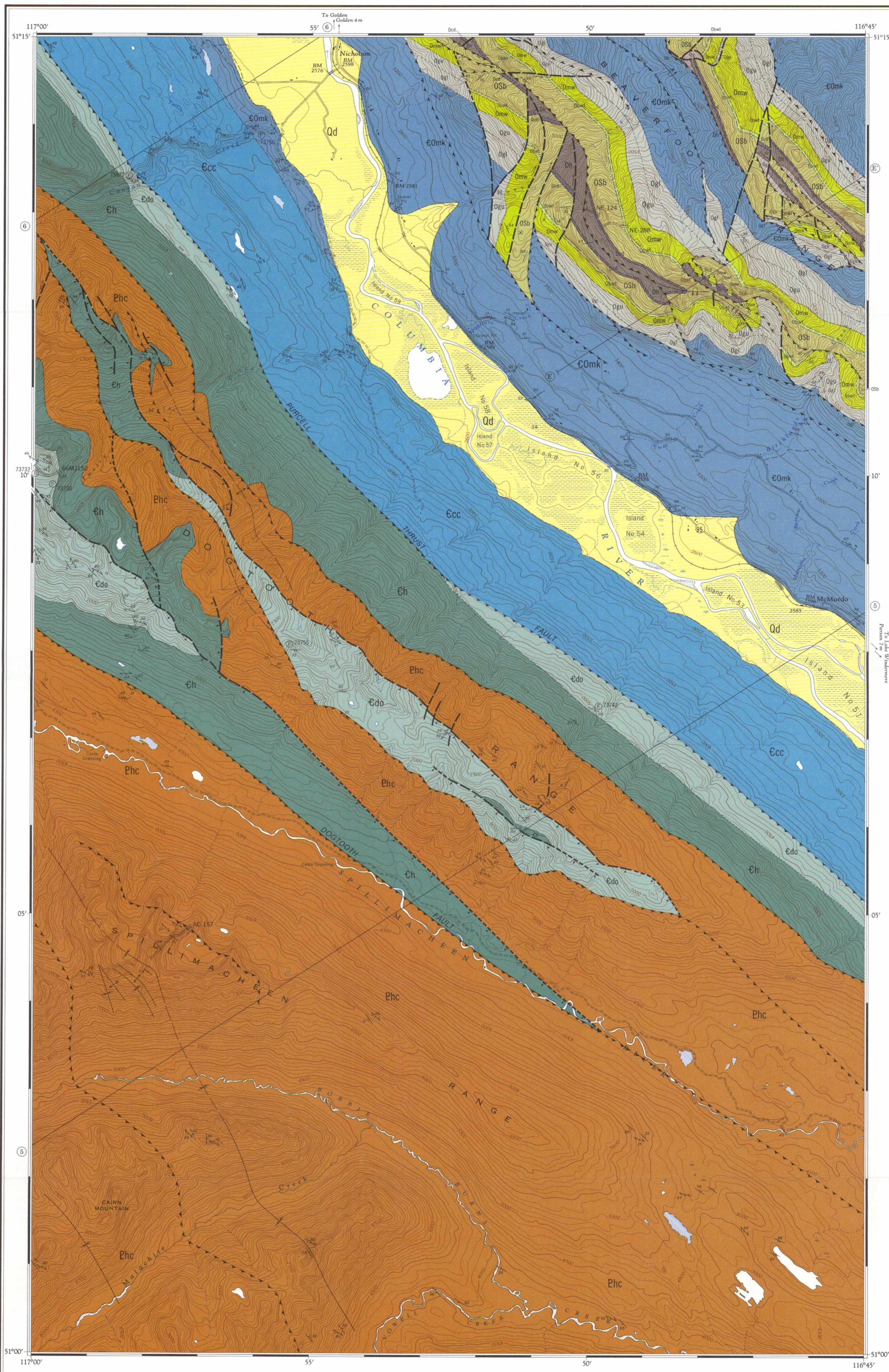
Any revisions or additional geological information known to the user would be welcomed by the Geological Survey of Canada

Base map at the same scale published by the Surveys and Mapping Branch in 1959

Copies of the topographical edition of this map may be obtained from the Canada Map Office, 615 Booth Street, Ottawa, Ontario K1A 0E9

Approximate magnetic declination 1979, 22°01.7' East decreasing 5.2" annually

Elevations in feet above mean sea level



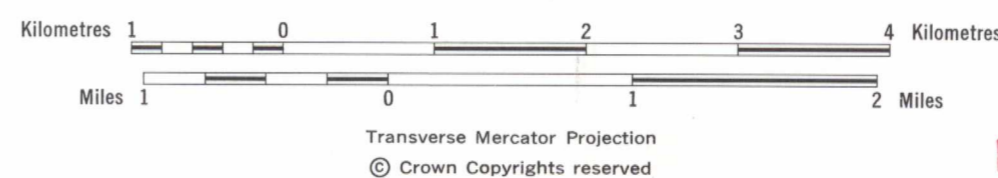
Copies of this map may be obtained from the Geological Survey of Canada, 601 Booth Street, Ottawa, Ontario K1A 0E9, 3303 - 33rd Street N.W., Calgary, Alberta T2L 2A7



MAP 1502A
 GEOLOGY
McMURDO
 (West Half)
 WEST OF FIFTH MERIDIAN
 BRITISH COLUMBIA

LIBRARY / BIBLIOTHÈQUE
 MAR 25 1980
 GEOLOGICAL SURVEY
 COMMISSION GÉOLOGIQUE

82 N/6	82 N/7	82 N/8
1497A	1496A	1483A
1502A	1501A	1477A
82 K/14	82 K/15	82 K/16



NATIONAL TOPOGRAPHIC SYSTEM REFERENCE AND INDEX TO ADJOINING GEOLOGICAL SURVEY OF CANADA MAPS
 MAP 1502A
McMURDO
 (West Half)
 BRITISH COLUMBIA
 NOT TO BE TAKEN FROM LIBRARY
 NE PAS SORTIR DE LA BIBLIOTHÈQUE
 1502A (W/2)