

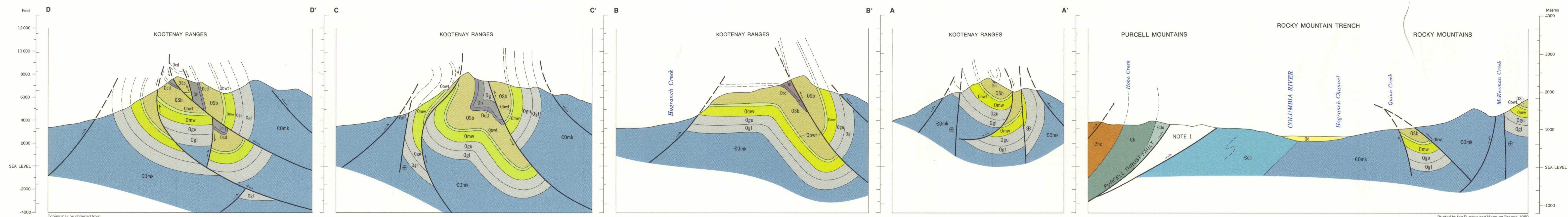
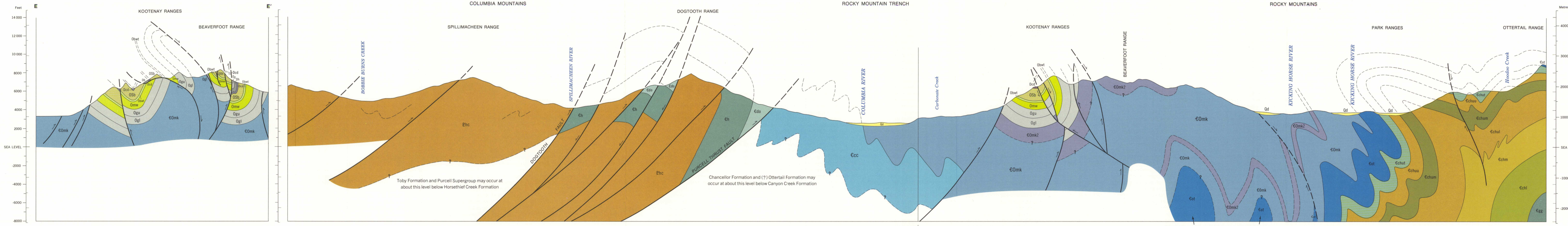


GEOLOGICAL SURVEY OF CANADA  
DEPARTMENT OF ENERGY, MINES AND RESOURCES

LIBRARY / BIBLIOTHÈQUE

MAR 25 1980

GEOLOGICAL SURVEY  
COMMISSION GÉOLOGIQUE



Diagrammatic structure sections A-A', B-B', C-C', D-D', E-E', 4 and 5 to accompany Map 1501A, McMurdo (East Half) and Map 1502A, McMurdo (West Half)

Scale 1:50,000

Geological drafting by G.S. Whitman, Institute of Sedimentary and  
Petroleum Geology, Geological Survey of Canada

NOT TO BE TAKEN FROM LIBRARY  
NE PAS SORTIR DE LA BIBLIOTHÈQUE



McMURDO STRUCTURE SECTIONS  
1501-02A  
suppl.