

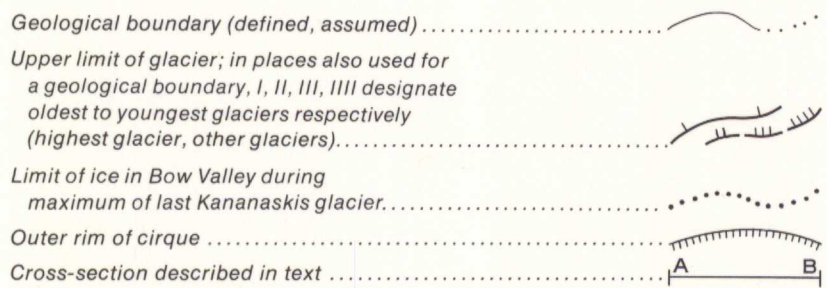


GEOLOGICAL SURVEY OF CANADA  
DEPARTMENT OF ENERGY, MINES AND RESOURCES

LEGEND

- QUATERNARY**
- POSTGLACIAL**
- 13** TALUS DEBRIS (rockfall and slide material): mostly coarse, angular pieces of unweathered bedrock
  - 12** MASS WASTING DEBRIS (slope wash and solifluction material, includes some talus and fan debris): poorly sorted fragments of rock, sand, silt; 12a, mostly fine (includes minor lake or stream sediment); fine sand, silt, clay
  - 11** FAN DEPOSITS (boundaries between individual fans shown by pecked lines): poorly sorted gravel, sand, silt, local talus debris
  - 10** STREAM DEPOSITS: gravel, sand, silt; 10a, on old floodplains; 10b, on modern floodplains; 10c, includes much exposed bedrock; 10d, mainly deltaic, includes alluvial fans
- GLACIAL AND POSTGLACIAL**
- 9** STREAM DEPOSITS: in abandoned glacial spillway valleys: sand, gravel; 9a, deltaic
  - 8** LAKE DEPOSITS: silt, clay, sand; 8a, chiefly silt and clay; 8b, chiefly sand and silt; 8c, includes much alluvium
- LATE GLACIAL**
- 7** VALLEY FILL (glacio-fluvial and fluvial deposits): gravel, sand, minor silt and clay; 7a, high terrace phase; 7b, low terrace phase
  - 6** OUTWASH, FINE: locally pitted or modified by wind: silt, sand, minor gravel, clay, and local blocks of till; 6a, thin over ground moraine
  - 5** OUTWASH, COARSE: gravel, sand, minor till; 5a, (may include some recessional moraine): hummocky or eroded surface; 5b, kame terrace, flat surface; 5c, kame terrace, strongly eroded
- ESKER DEPOSITS (shown by symbol):** poorly sorted gravel and sand
- 3** GROUND MORAINE: till; 3a, dark phase; 3b, thinly covered by stream or lake deposits; 3c, thin over bedrock; 3d, coarse, in cirque, probably Neoglacial
- EARLY GLACIAL**
- 2** STREAM DEPOSITS (confined to glacial spillways): sand, gravel
  - 1** GROUND MORAINE: till; 1a, covering drumlinoid hill

- PALEOZOIC AND MESOZOIC**
- R** PREGLACIAL BEDROCK; Ra, exposed in non-glaciated areas



Geology compiled by A. MacS. Stalker, 1965

To accompany GSC paper 72-51 by A. MacS. Stalker

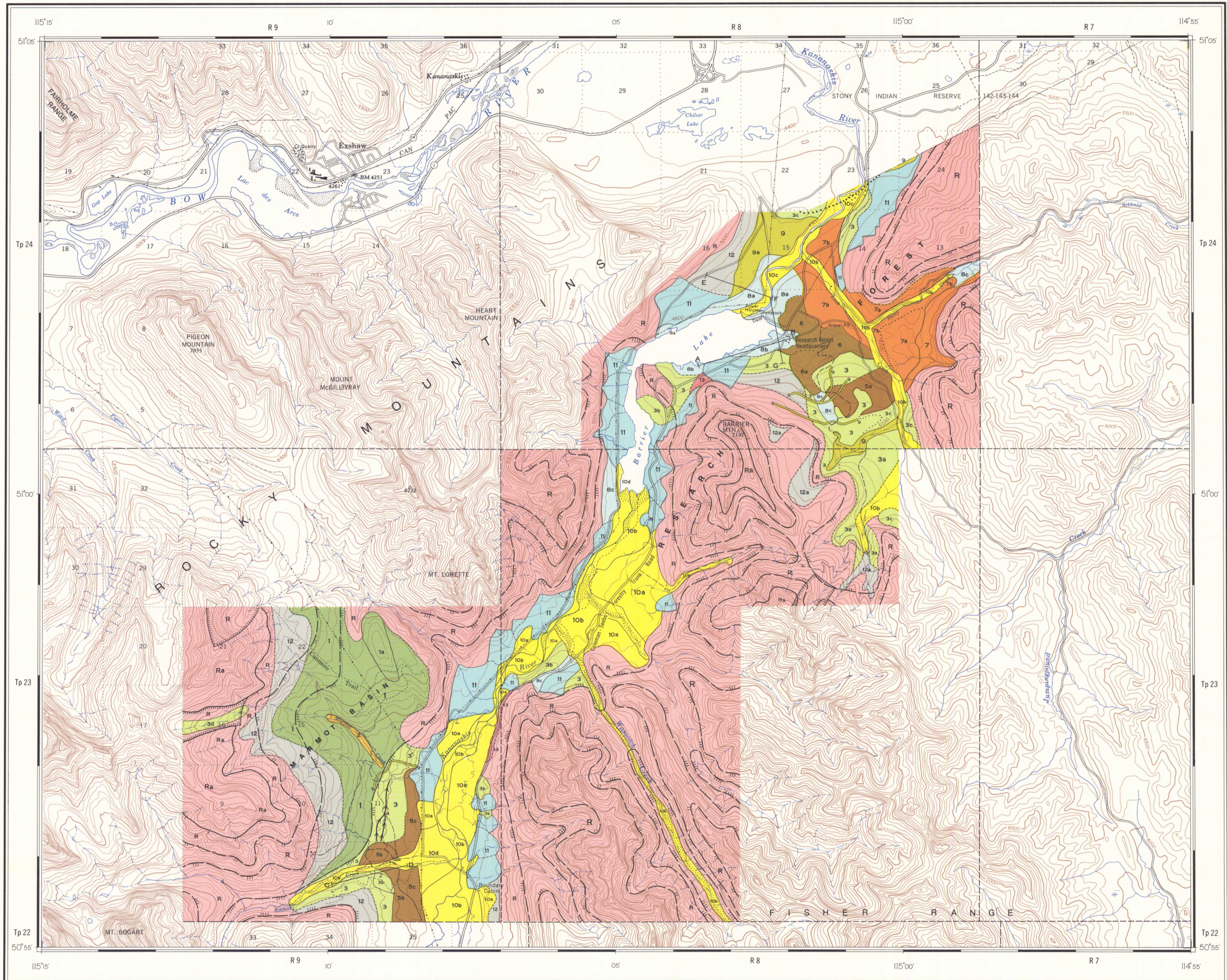
Geological cartography by the Geological Survey of Canada

Base-map assembled by the Geological Survey of Canada from maps published at the same scale by the Surveys and Mapping Branch in 1954, 1959, 1969, 1970. Roads were revised by the Geological Survey of Canada for this edition

Copies of the topographical edition of this map may be obtained from the Canada Map Office, 615 Booth Street, Ottawa, Ontario K1A 0E9

Approximate magnetic declination 1973, 21°51' West, decreasing 2.7' annually

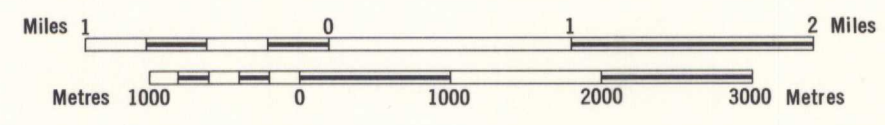
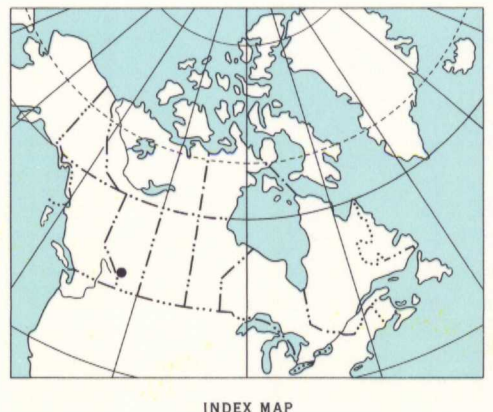
Elevation in feet above mean sea-level



Copies of this map may be obtained from the Geological Survey of Canada, Ottawa

Published 1974

MAP 1365A  
 PAPER 72-51  
 SURFICIAL GEOLOGY  
**KANANASKIS RESEARCH FOREST-MARMOT CREEK AREA**  
 (WEST OF FIFTH MERIDIAN)  
 ALBERTA  
 Scale 1:50,000



82O/4	82O/3	82O/2
82J/13	1365A 82J/14	82J/15
82J/12	82J/11	82J/10

NATIONAL TOPOGRAPHIC SYSTEM REFERENCE  
**KANANASKIS RESEARCH FOREST-MARMOT CREEK AREA**  
 ALBERTA

**NOT TO BE TAKEN FROM LIBRARY**  
**NE PAS SORTIR DE LA BIBLIOTHEQUE**

612 cap 1900c

1365A

1365A