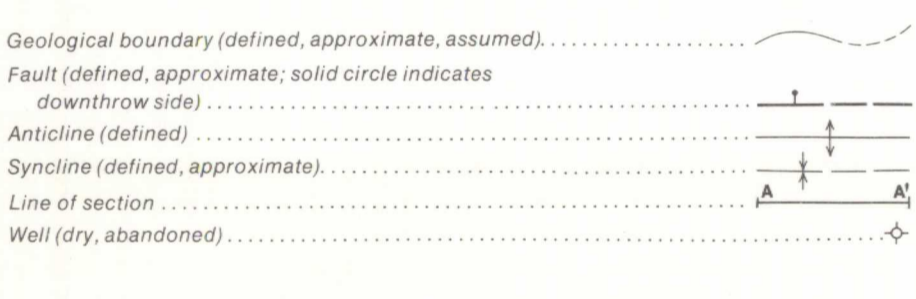
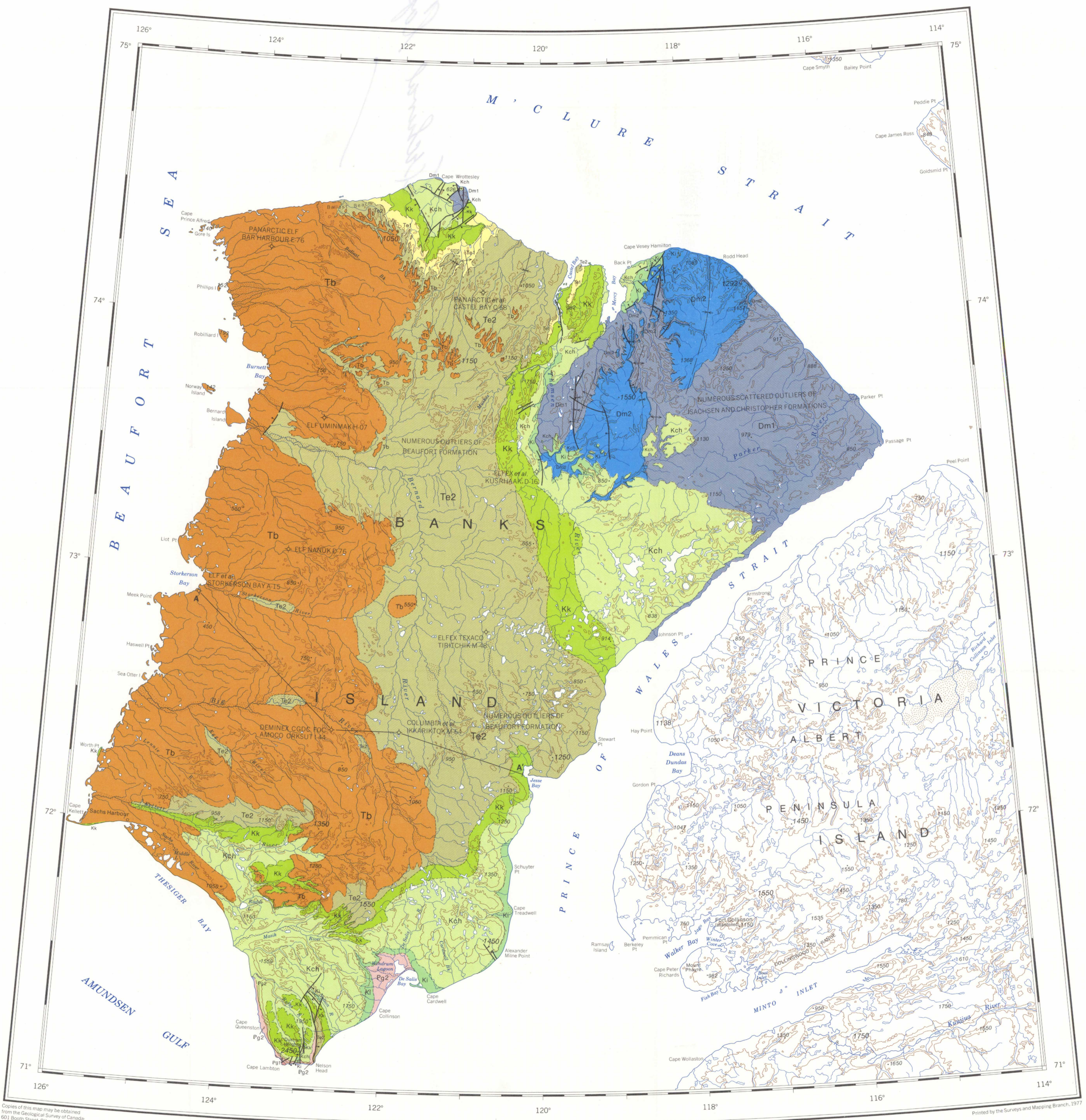
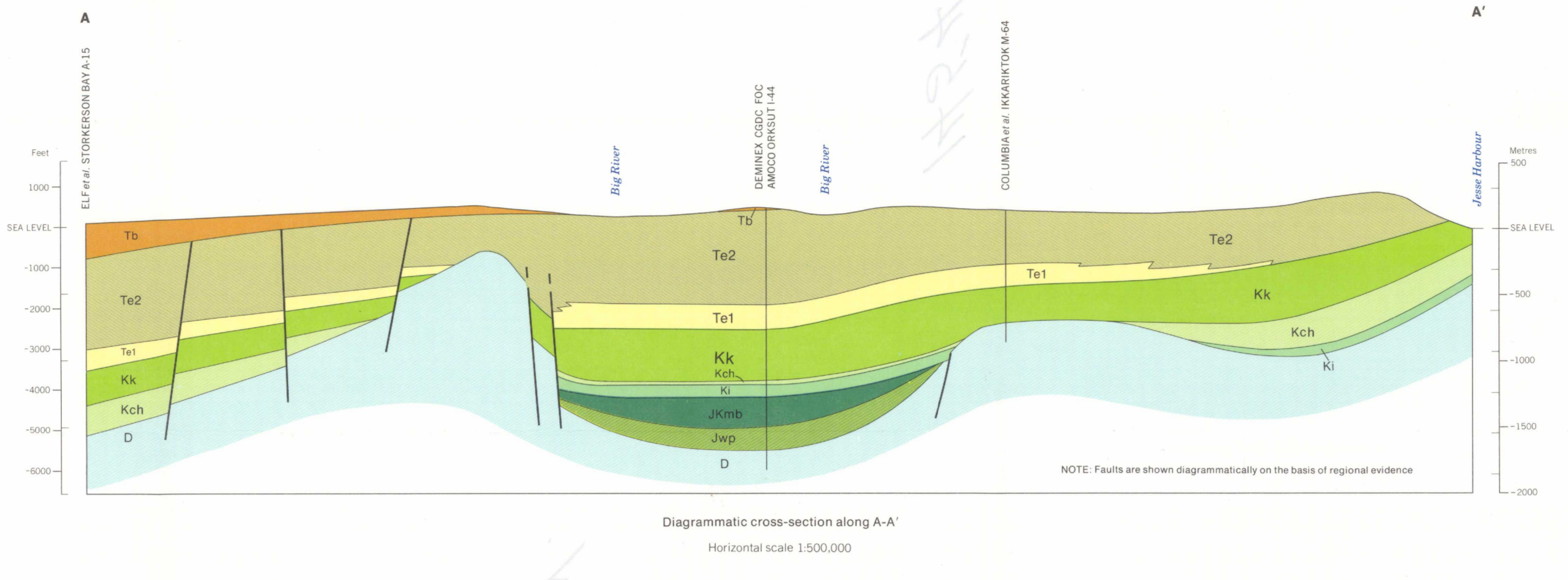


- LEGEND**
- CENOZOIC**
- TERTIARY**
 - MIOCENE**
 - Tb BEAUFORT FORMATION
 - PALEOCENE-EOCENE**
 - Te2 EUREKA SOUND FORMATION; Cyclic member
 - PALEOCENE**
 - Te1 EUREKA SOUND FORMATION; Shale member
 - MESOZOIC**
 - CRETACEOUS**
 - UPPER CRETACEOUS**
 - Kk KANGUK FORMATION
 - LOWER CRETACEOUS**
 - Kch CHRISTOPHER AND HASSEL FORMATIONS
 - Ki ISACHSEN FORMATION
 - DEVONIAN**
 - UPPER DEVONIAN**
 - MELVILLE ISLAND GROUP
 - Dm2 Upper map-unit (Mercy Bay Member and younger strata)
 - Dm1 Lower map-unit (pre-Mercy Bay Member)
 - NEOHELIXIAN/HADRYNIAN**
 - Pg2 GLENELG FORMATION (Upper map-unit)
 - Pg1 GLENELG FORMATION (Lower map-unit)
 - PROTEROZOIC**
 - SUBSURFACE ONLY (STRUCTURE CROSS-SECTION)**
 - JURASSIC-CRETACEOUS**
 - UPPER JURASSIC AND LOWER CRETACEOUS**
 - Jkmb MOULD BAY FORMATION
 - JURASSIC LOWER (?) AND MIDDLE JURASSIC**
 - Jwp WILKIE POINT FORMATION
 - DEVONIAN**
 - D Undivided



Geological boundary (defined, approximate, assumed)
 Fault (defined, approximate; solid circle indicates downthrow side)
 Anticline (defined)
 Syncline (defined, approximate)
 Line of section
 Well (dry, abandoned)

Compiled by A.D. Miall, 1975
 To accompany GSC Memoir 387 by A.D. Miall

Geological cartography by K.M. Ortman and G.S. Whitman, Institute of Sedimentary and Petroleum Geology, Geological Survey of Canada
 Any revisions or additional geological information known to the user would be welcomed by the Geological Survey of Canada

Village or settlement
 Rapids
 Contours (interval 500 feet)
 Sand
 Height in feet above mean sea level 1750

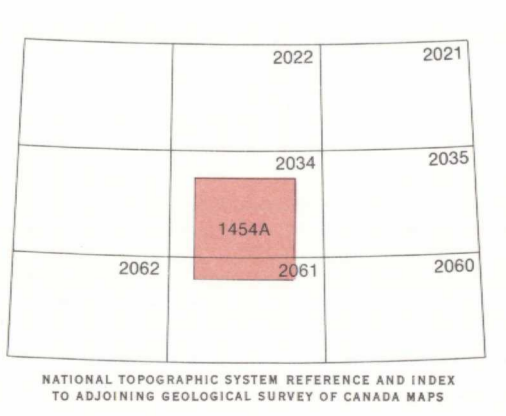
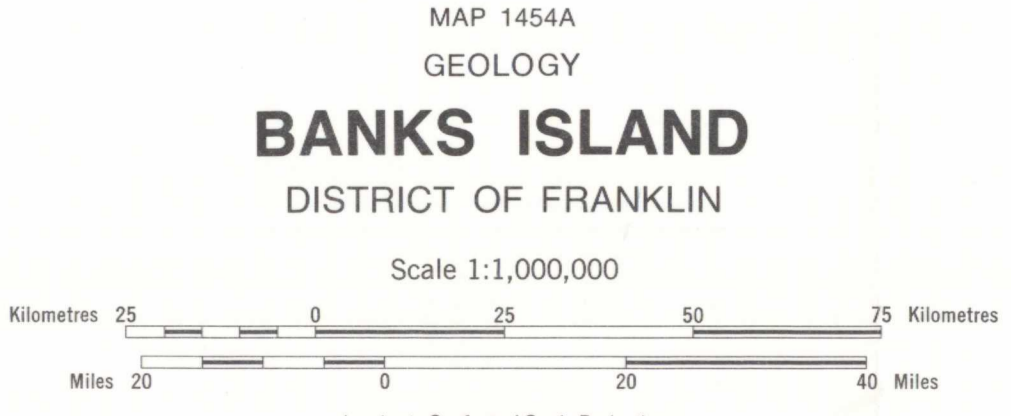
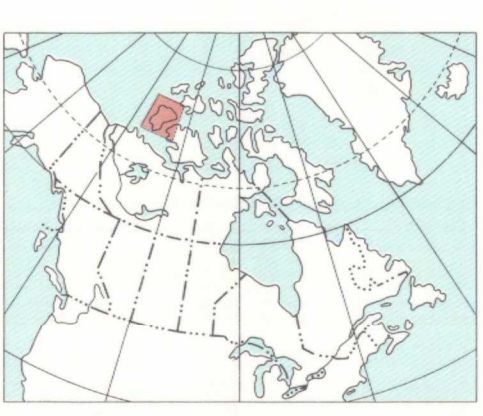
Base map cartography by the Geological Survey of Canada from parts of 1:1,000,000 scale maps "Horton River" and "Thomsen River" published by the Surveys and Mapping Branch in 1969

Copies of the topographical edition of these maps may be obtained from the Canada Map Office, 615 Booth Street, Ottawa, Ontario, K1A 0E9

The daily change of the North Magnetic Pole causes the magnetic compass to be very erratic in this area
 Magnetic declination 1977 varies from 5°04' easterly at centre of west edge to 54°27.4' easterly at centre of east edge. Mean annual change 17.6' westerly

Elevation in feet above mean sea level

Copies of this map may be obtained from the Geological Survey of Canada, 601 Booth Street, Ottawa, Ontario K1A 0E8, 3303 - 33rd Street N.W., Calgary, Alberta T2L 2A7



NOT TO BE TAKEN FROM LIBRARY
 NE PAS SORTIR DE LA BIBLIOTHÈQUE