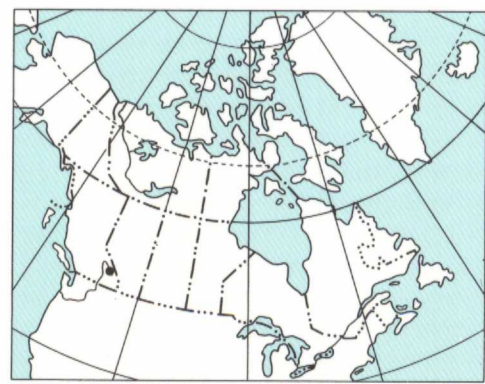
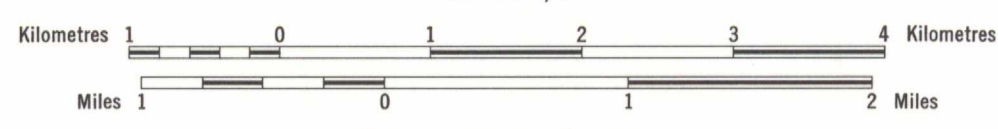




Copies of this map may be obtained from the Geological Survey of Canada, 601 Booth Street, Ottawa, Ontario K1A 0E8, 3303 - 33rd Street N.W., Calgary, Alberta T2L 2A7.



MAP 1476A
 GEOLOGY
MOUNT GOODSIR
 (East Half)
 WEST OF FIFTH MERIDIAN
 BRITISH COLUMBIA-ALBERTA
 Scale 1:50,000



82 N/7	82 N/8	82 O/9
	1297A	1296A
82 N/2	82 N/1	82 O/4
	1477A	1295A
82 K/15	82 K/16	82 J/13

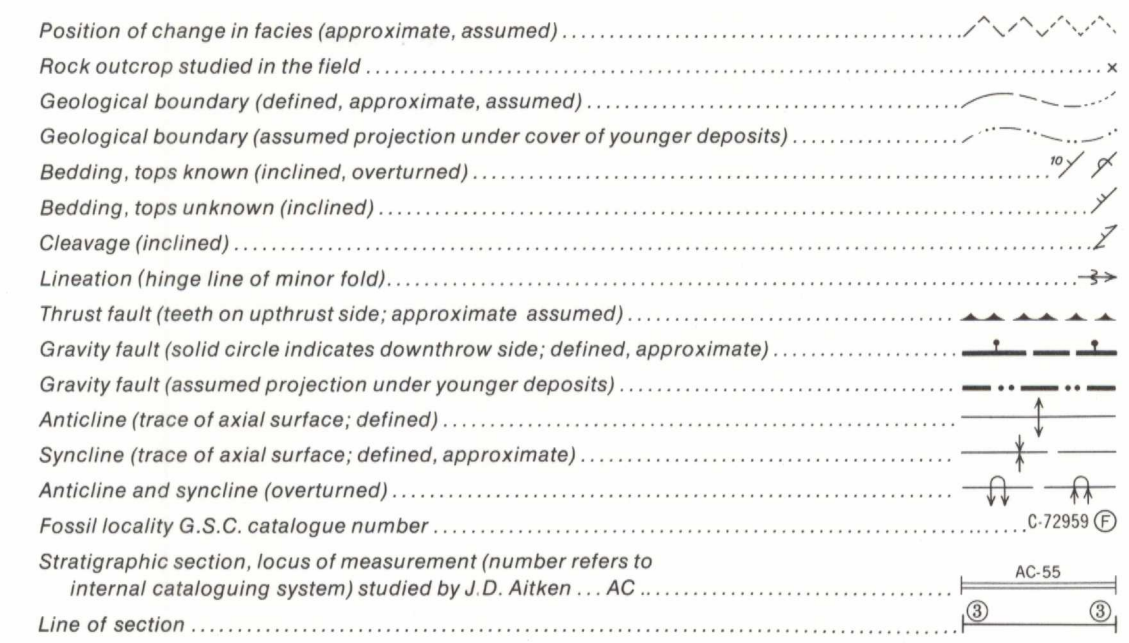
NATIONAL TOPOGRAPHIC SYSTEM REFERENCE AND INDEX TO ADJOINING GEOLOGICAL SURVEY OF CANADA MAPS

NOT TO BE TAKEN FROM LIBRARY
 NE PAS SORTIR DE LA BIBLIOTHÈQUE

LEGEND

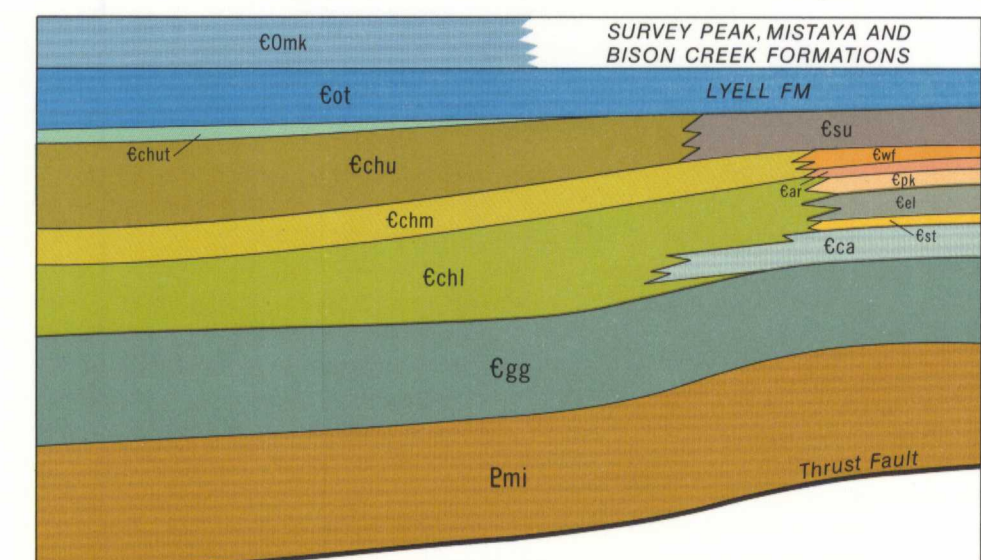
Note: Legend blocks apply to Maps 1477A and 1476A. Coloured legend blocks indicate map-units that appear on this map.

- QUATERNARY**
PLEISTOCENE AND RECENT
- Qsi Permanent snow and ice
 - Qd Till, alluvium, colluvium; gravel, sand, silt (shown only where bedrock is extensively concealed)
- CENOZOIC**
- DEVONIAN OR (?) MISSISSIPPIAN**
- DMir ICE RIVER COMPLEX: syenite, nepheline and sodalite syenite, urtite, jiolite, jacupiransite and carbonatite; contains inclusions of Ottertail Formation and McKay Group
- DEVONIAN**
- Dh HARROGATE FORMATION: dolomite, very finely crystalline, dark grey; limestone, very finely crystalline to microcrystalline, dark grey, argillaceous and shaly
 - Dcd CEDARED FORMATION: dolomite, very finely crystalline, light grey and light brownish grey, sandy (quartz), silty and argillaceous; dolomitic quartz sandstone; dolomite breccia
- ORDOVICIAN AND (?) SILURIAN**
- OSb BEAVERFOOT FORMATION (Upper part): dolomite, finely crystalline to microcrystalline, dark grey to light brownish grey, partly mottled, partly cherty
- ORDOVICIAN**
- Obwt Whiskey Trail Member: dolomite, very finely crystalline to microcrystalline, dark grey to olive-grey, argillaceous, platy, recessive
 - Omw MOUNT WILSON FORMATION: quartz sandstone and quartzite, fine grained, white to medium grey, buff-grey, pinkish grey, crossbedded in part
 - Ogu GLENOGLE FORMATION (Upper part): siltstone, sandstone and shale; medium to dark grey-brown
 - Ogl GLENOGLE FORMATION (Lower part): shale and argillaceous limestone; dark grey-black
- CAMBRIAN AND ORDOVICIAN**
- COMk MCKAY GROUP: slate and shale, grey and green, chloritic and calcareous; grey micritic limestone nodules and interbeds; oolitic limestone
- CAMBRIAN**
- UPPER CAMBRIAN**
- Eot OTTERTAIL FORMATIONS: limestone, micrite, partly with argillaceous and dolomitic partings and mottling, weathers grey, massive
 - Echut CHANCELLOR FORMATION (Upper Transitional Unit): limestone, medium to dark grey, dense, partly dolomitic mottled and laminated; interbedded with calcareous shale and slate, light greenish grey to light brown
 - Echu CHANCELLOR FORMATION (Upper part): slate and calcareous slate, grey, greenish grey and brownish grey; mainly homogeneous with thin interbeds of micritic and partly fragmental limestone in middle part; pervasive cleavage
 - Echm CHANCELLOR FORMATION (Middle part): thinly bedded, argillaceous and silty, grey and brown limestone and orange-weathering silty dolomite, pervasive cleavage; interbedded with grey slate and calcareous slate
 - Echl CHANCELLOR FORMATION (Lower part): grey argillaceous limestone, brownish- and greenish-grey calcareous slate, thinly bedded brown argillaceous dolomite, local exotic lenses and blocks of massive grey limestone; pervasive cleavage
- MIDDLE AND UPPER CAMBRIAN**
- Ewf WATERFOWL FORMATION: limestone, mainly micritic with dolomitic partings and mottling; partly silty and sandy, dolomitized equivalents; minor siltstone and sandstone
- MIDDLE CAMBRIAN**
- Ear ARCTOMYS FORMATION: shale, purple-red, green and grey; siltstone, grey, yellow, dolomitic; dolomite, micritic, flaggy, orange weathering; mud cracks, salt crystal casts
 - Epk PIKA FORMATION: limestone micritic, flaggy, with partings of argillaceous dolomite; argillaceous limestone and calcareous shale near the base; dolomitized equivalents
 - Eel ELDON FORMATION: limestone, micritic, grey, dolomite mottled massive; dolomitized equivalents
 - Ect STEPHEN FORMATION: grey and green shale; interbedded with limestone, partly fragmental, partly dense and argillaceous, minor oolite
 - Eca CATHEDRAL FORMATION: limestone, micritic, grey, dolomite mottled massive; dolomitized equivalents
- LOWER CAMBRIAN**
- Egg GOG GROUP: quartz sandstone, massive and thickly bedded; interbedded with grey siltstone and silty shale; psalitic and fragmental limestone at the top
- PROTEROZOIC**
- UPPER PROTEROZOIC (HADRYNIAN)**
- Emi WINDERMERE SUPERGROUP
MIETTE GROUP: slate and silty slate, dark grey; quartz sandstone, feldspathic and argillaceous; interbedded with green, greenish-grey, and grey slate and with feldspathic quartz-pebble conglomerate



Geology by R.A. Price, E.W. Mountjoy and D.G. Cook based on studies of vertical air photographs, ground and air observations by J.D. Aitken, H.R. Balkwill, D.G. Cook, E.W. Mountjoy and R.A. Price (1964-1967)

SCHMATIC STRATIGRAPHIC RELATIONSHIPS



Geological cartography by B.H. Ortman, Institute of Sedimentary and Petroleum Geology, Geological Survey of Canada

Any revisions or additional geological information known to the user would be welcomed by the Geological Survey of Canada

Base-map at the same scale published by the Surveys and Mapping Branch in 1961

Copies of the topographical edition of this map can be obtained from the Canada Map Office, 615 Booth Street, Ottawa, Ontario K1A 0E6

Approximate magnetic declination 1978, 21°51.3' East decreasing 5.3' annually

Elevations in feet above mean sea level

LIBRARY / BIBLIOTHÈQUE

MAY 29 1979

GEOLOGICAL SURVEY OF CANADA / COMMISSION GÉOLOGIQUE

MAP 1476A
 (East Half)
MOUNT GOODSIR
 BRITISH COLUMBIA-ALBERTA

1476A