

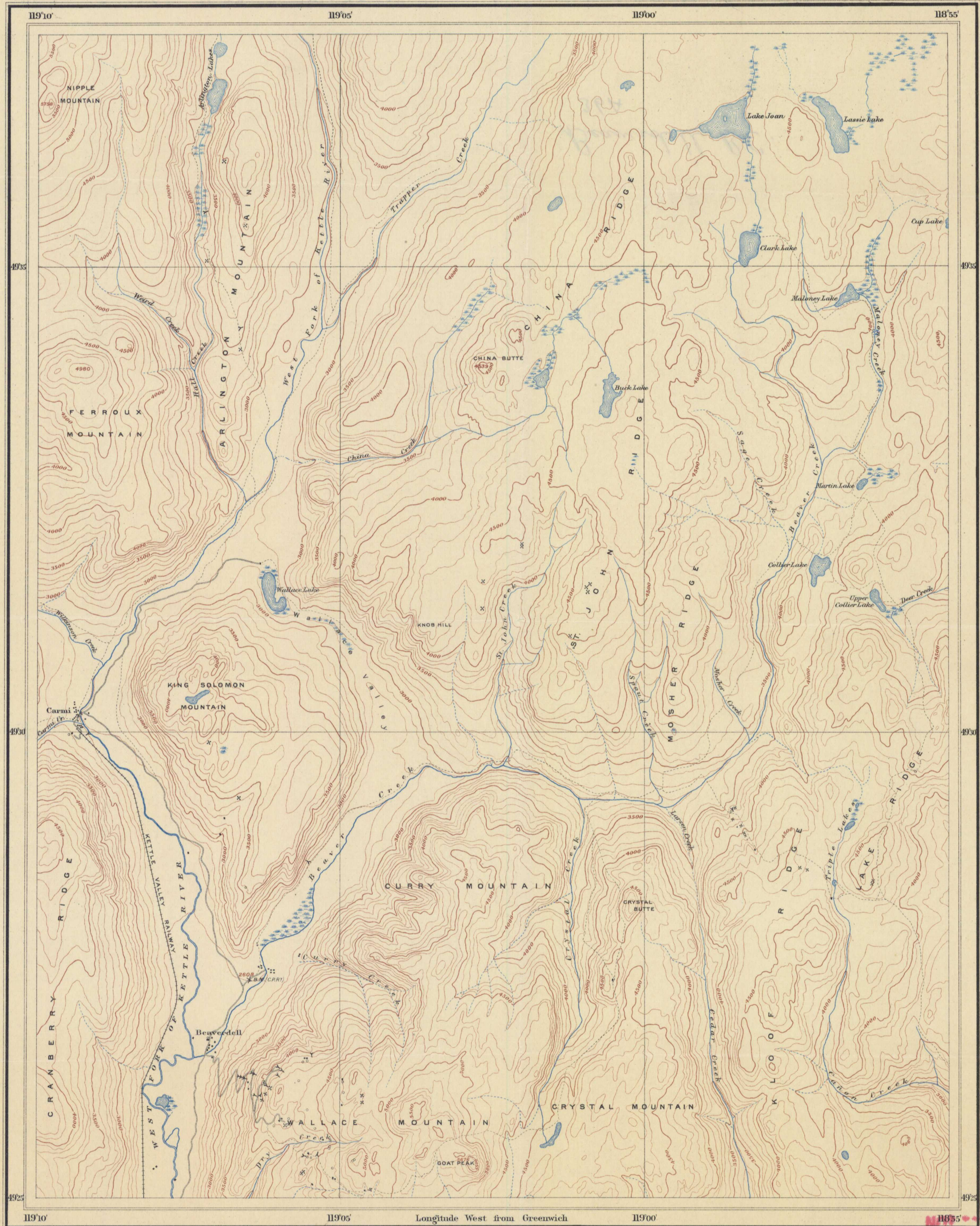
Canada
Department of Mines
GEOLOGICAL SURVEY

HON. W. TEMPLEMAN, MINISTER; A. P. LOW, DEPUTY MINISTER;
R. W. BROCK, DIRECTOR.

TOPOGRAPHY

1911

BRITISH COLUMBIA



112 85E
1060 0174

LEGEND

Culture

- Roads and buildings
- Trails
- Bridges
- Post offices
- Shafts
- Tunnels
- Prospects
- Bench-marks

Water

- Rivers and lakes
- Streams, flow disappearing in places
- Watercourses with intermittent flow
- Marshes

Relief

- Contours (showing land forms and elevations above sea level) Interval, 100 feet
- Figures showing heights in feet above sea level

Geographical position subject to revision.
Magnetic declination about 25° 30' East.
Determination of contours based on elevation of C.P.R. bench-mark.

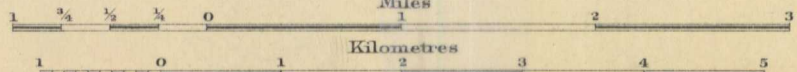
C.O. Senecal, Geographer and Chief Draughtsman.
G.G. Aitken, O.E. Prud'homme, Draughtsmen.

MAP 36 A

BEAVERDELL
YALE DISTRICT
BRITISH COLUMBIA



Scale 62,500
Miles



Note: For practical purposes assume
1 MILE TO 1 INCH

TOPOGRAPHY
L. REINECKE, (IN CHARGE) 1909, 1910.

NE PAS PRETER LA BIBLIOTHEQUE
NOT TO BE PRETERED BY LIBRARY
G 3401 . G5
1910 - G4
obmap