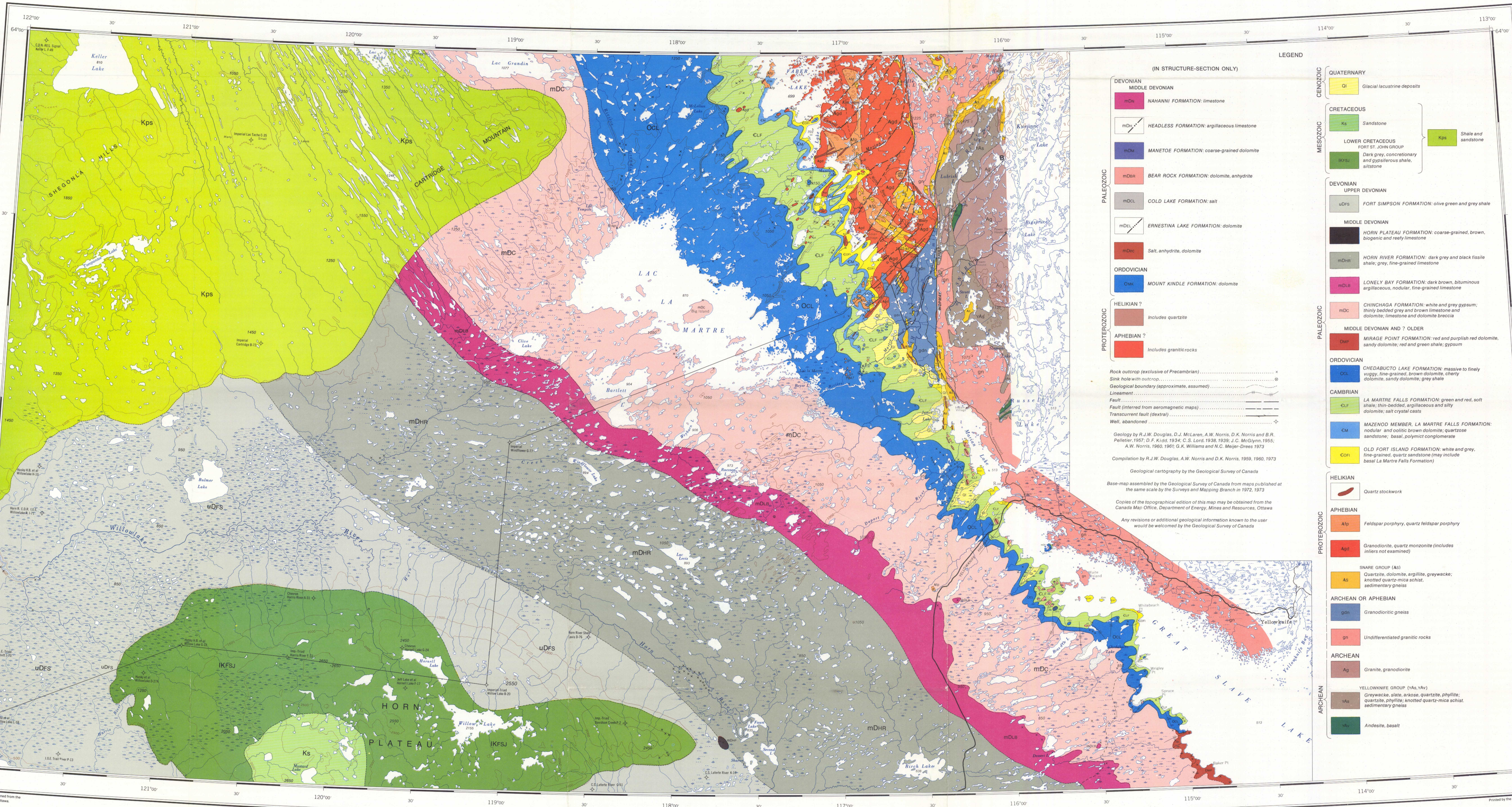


Structure-section A-B



**LEGEND**

**(IN STRUCTURE-SECTION ONLY)**

**DEVONIAN**

- MIDDLE DEVONIAN**
  - NAHANNI FORMATION: limestone
- HEADLESS FORMATION: argillaceous limestone**
- MANETOE FORMATION: coarse-grained dolomite**
- BEAR ROCK FORMATION: dolomite, anhydrite**
- COLD LAKE FORMATION: salt**
- ERNESTINE LAKE FORMATION: dolomite**

**ORDOVICIAN**

- MOUNT KINDLE FORMATION: dolomite**

**HELIKIAN ?**

- Includes quartzite

**APHEBIAN ?**

- Includes granitic rocks

**PROTEROZOIC**

- Rock outcrop (exclusive of Precambrian)
- Sink hole with outcrop
- Geological boundary (approximate, assumed)
- Lineament
- Fault
- Fault (inferred from aeromagnetic maps)
- Transcurrent fault (dextral)
- Well, abandoned

**Geology by R.J.W. Douglas, D.J. McLaren, A.W. Norris, D.K. Norris and B.R. Pelletier, 1967; D.F. Kidd, 1934; C.S. Lord, 1936, 1939; J.C. McLynn, 1955; A.W. Norris, 1960, 1961; G.K. Williams and K.C. Meyer-Drees, 1973**

**Geological cartography by the Geological Survey of Canada**

**Base-map assembled by the Geological Survey of Canada from maps published at the same scale by the Surveys and Mapping Branch in 1972, 1973**

**Copies of the topographical edition of this map may be obtained from the Canada Map Office, Department of Energy, Mines and Resources, Ottawa**

**Any revisions or additional geological information known to the user would be welcomed by the Geological Survey of Canada**

**CENOZOIC**

- QUATERNARY**
  - Ql: Glacial lacustrine deposits
- MESOZOIC**
  - CRETACEOUS**
    - Ks: Sandstone
    - Kps: Shale and sandstone
  - LOWER CRETACEOUS**
    - Fort St. John Group: Dark grey, concretionary and gypsiferous shale, siltstone
- DEVONIAN**
  - UPPER DEVONIAN**
    - uDRS: FORT SIMPSON FORMATION: olive green and grey shale
  - MIDDLE DEVONIAN**
    - HORN PLATEAU FORMATION: coarse-grained, brown, biogenic and reefy limestone
    - mDRH: HORN RIVER FORMATION: dark grey and black fossiliferous shale; grey, fine-grained limestone
    - mDLB: LONELY BAY FORMATION: dark brown, bituminous argillaceous, nodular, fine-grained limestone
    - mDC: CHINCHAGA FORMATION: white and grey gypsum; thinly bedded grey and brown limestone and dolomite; limestone and dolomite breccia
- MIDDLE DEVONIAN AND ? OLDER**
  - mDR: MIRAGE POINT FORMATION: red and purplish red dolomite, sandy dolomite; red and green shale; gypsum
- ORDOVICIAN**
  - OC: CHEDABUCTO LAKE FORMATION: massive to finely waxy, fine-grained, brown dolomite, cherty dolomite, sandy dolomite; grey shale
- CAMBRIAN**
  - CLF: LA MARTRE FALLS FORMATION: green and red, soft shale; thin-bedded, argillaceous and silty dolomite; salt crystal casts
  - CM: MAZENOD MEMBER, LA MARTRE FALLS FORMATION: nodular and columnar brown dolomite, quartzose sandstone, basal, polymict conglomerate
  - COF: OLD FORT ISLAND FORMATION: white and grey, fine-grained, quartz sandstone (may include basal La Martre Falls Formation)

**HELIKIAN**

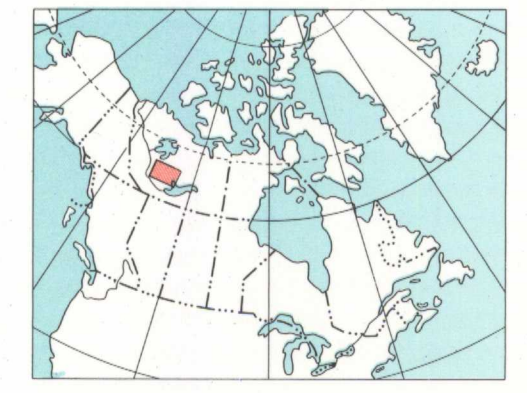
- QZ: Quartz stockwork

**APHEBIAN**

- Alp: Feldspar porphyry, quartz feldspar porphyry
- Agd: Granodiorite, quartz monzonite (includes inliers not examined)

**PROTEROZOIC**

- SNARE GROUP (AS)**
  - AS: Quartzite, dolomite, argillite, greywacke; knotted quartz-mica schist, sedimentary gneiss
- ARCHEAN OR APHEBIAN**
  - gn: Granodioritic gneiss
  - gn: Undifferentiated granitic rocks
- ARCHEAN**
  - Ag: Granite, granodiorite
  - YAG: YELLOWKNIFE GROUP (YAG, YAV)
    - YAG: Greywacke, slate, argon, quartzite, phyllite; quartzite, phyllite; knotted quartz-mica schist, sedimentary gneiss
    - YAV: Andesite, basalt



MAP 1372A  
GEOLOGY  
**HORN RIVER**  
DISTRICT OF MACKENZIE  
Scale 1:500,000

Miles 0 8 16 24 Miles  
Kilometres 0 8 16 24 32 Kilometres

Universal Transverse Mercator Projection  
© Crown Copyrights reserved

Mean magnetic declination 1974, 23° 32' East, decreasing 6.6' annually. Readings vary from 31° 03' in the SE corner to 36° 01' in the NW corner of the map area.  
Elevations in feet above mean sea-level

1372A

1372A

1372A

NOT TO BE TAKEN FROM LIBRARY  
NE PAS SORTIR DE LA BIBLIOTHEQUE

NATIONAL TOPOGRAPHICAL SYSTEM REFERENCE FOR GEOLOGICAL MAPS OF OPERATION MACKENZIE

MAP 1372A  
**HORN RIVER**  
DISTRICT OF MACKENZIE