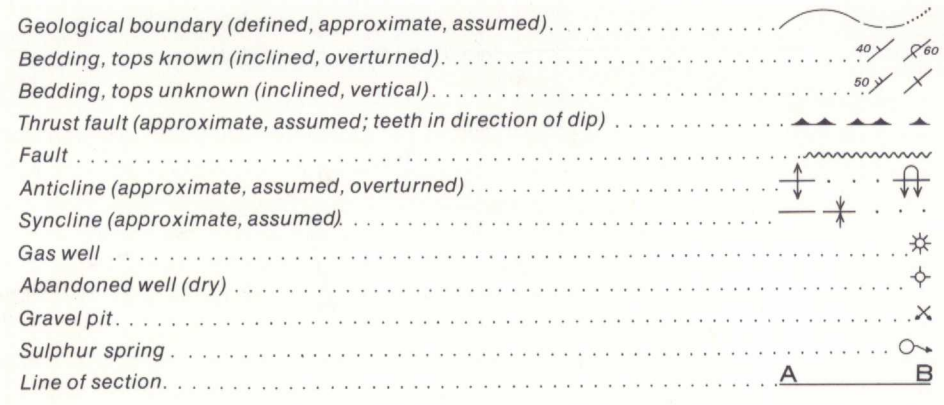




LEGEND

- CENOZOIC**
- TERTIARY**
- PALEOCENE**
- Tpa** PASKAPOO FORMATION: flaggy to slabby, yellowish brown weathering, feldspathic sandstone; grey and greenish grey siltstone and rubbly mudstone; minor conglomerate (non-marine)
- CRETACEOUS**
- UPPER CRETACEOUS**
- Kbzu** BRAZEAU FORMATION (upper part): flaggy to slabby, grey and minor greenish grey, feldspathic sandstone; greenish grey and grey siltstone and rubbly mudstone; minor bentonite and rare coal (non-marine)
- Kbzl** BRAZEAU FORMATION (lower part): flaggy to slabby, greenish grey and grey feldspathic sandstone; greenish grey and grey siltstone and rubbly mudstone; local pebbly sandstone and pebble-conglomerate (non-marine)
- ALBERTA GROUP**
- Kwp** WAPIABI FORMATION: silty, dark grey, platy to rubbly shale and calcareous shale, commonly with platy, laminated siltstone and sandstone layers; concretionary shale and mudstone; minor argillaceous sandstone; minor pebble layers and bentonite seams (marine)
- Kcr** CARDIUM FORMATION: very fine- to fine-grained, grey sandstone; grey to dark grey, argillaceous siltstone and silty shale (locally concretionary); minor pebble conglomerate layers and lenses (marine)
- MESOZOIC**
- Kbk** BLACKSTONE FORMATION: dark grey shale, including silty shale, rubbly shale, calcareous shale and minor concretionary shale; grey to dark grey siltstone; minor sandstone, bentonite seams and pebble layers (marine)
- LOWER CRETACEOUS**
- BLAIRMORE GROUP**
- Kbm** BEAVER MINES FORMATION: flaggy to slabby, greenish grey and grey, feldspathic sandstone, platy siltstone and rubbly mudstone; minor grey shale; minor pebbly sandstone and conglomerate (locally including phenoclasts of igneous rock) (non-marine)
- SUBSURFACE ONLY (STRUCTURE CROSS-SECTIONS)**
- Kbl** LOWER BLAIRMORE: grey siltstone and sandstone, commonly calcareous, locally limonitic; grey and black, locally carbonaceous shale; minor coal seams and limestone. Includes conglomerate, pebbly sandstone and sandstone of the Cadomin Formation at the base (non-marine)
- JURASSIC AND (?) CRETACEOUS**
- UPPER JURASSIC AND (?) LOWER CRETACEOUS**
- JKk** KOOTENAY FORMATION: grey and black, fine- to coarse-grained, commonly carbonaceous and limonitic, crossbedded sandstone; grey to black commonly carbonaceous shale; minor coal. [non-marine and (?) marine]
- JURASSIC**
- FERNIE GROUP**
- Jf** Shale; minor siltstone and sandstone (marine)
- MISSISSIPPIAN**
- RUNDLE GROUP**
- Mr** Limestone and dolomite (marine)
- PALEOZOIC**
- BANFF FORMATION**
- Mbf** argillaceous and silty limestone; calcareous siltstone; limestone (marine)



Geology by N.C. Oilerenshaw, 1967

Geological cartography by the Institute of Sedimentary and Petroleum Geology, 1972

Any revisions or additional geological information known to the user would be welcomed by the Geological Survey of Canada

Base-map at the same scale published by the Surveys and Mapping Branch in 1960

Copies of the topographical edition of this map may be obtained from the Canada Map Office, 615 Booth Street, Ottawa, Ontario K1A 0E8

Approximate magnetic declination 1972, 22°06' East decreasing 2.7' annually

Elevations in feet above mean sea-level

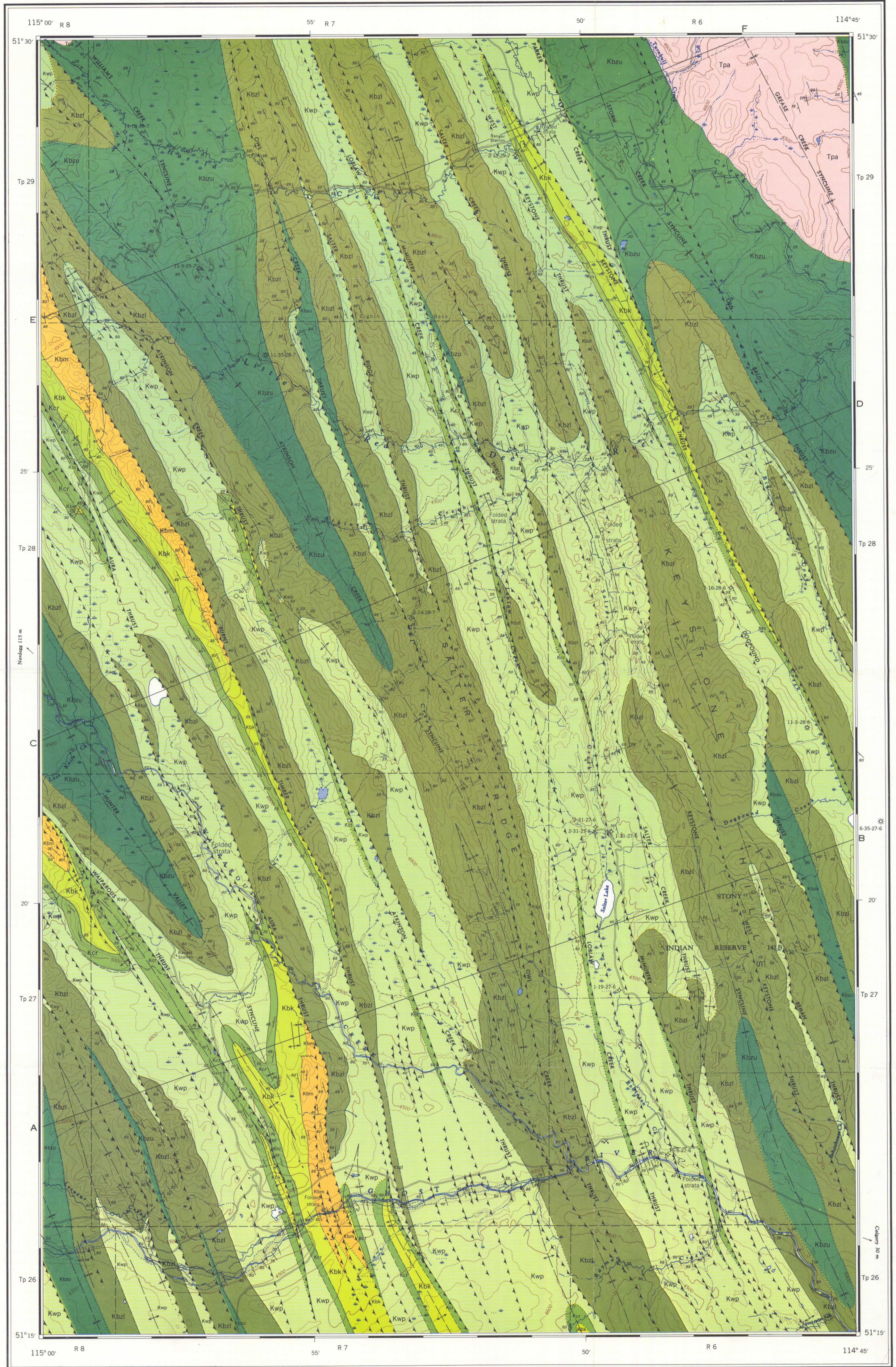
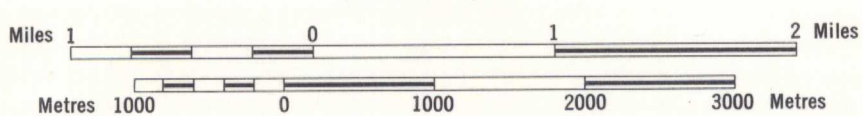
82 0/11	549A	82 0/10	82 0/9
11-1965	549A	548A	
82 0/6	82 0/6	82 0/7	82 0/8
1272A	1347A	1351A	652A
82 0/3	82 0/3	82 0/2	82 0/1
1266A	1265A	777A	653A

NATIONAL TOPOGRAPHIC SYSTEM REFERENCE AND INDEX TO ADJOINING GEOLOGICAL SURVEY OF CANADA MAPS



MAP 1351A
GEOLOGY
WILDCAT HILLS
(WEST HALF)
WEST OF FIFTH MERIDIAN
ALBERTA

Scale 1:50,000



Published, 1972
Copies of this map may be obtained from the Geological Survey of Canada, Ottawa

NOT TO BE TAKEN FROM LIBRARY
NE PAS SORTIR DE LA BIBLIOTHÈQUE

Printed by the Surveys and Mapping Branch

MAP 1351A
WILDCAT HILLS
(West Half)
ALBERTA

1351A

ALTA. Wildcat Hills W/2
1:50,000
MAP 1351A

1992