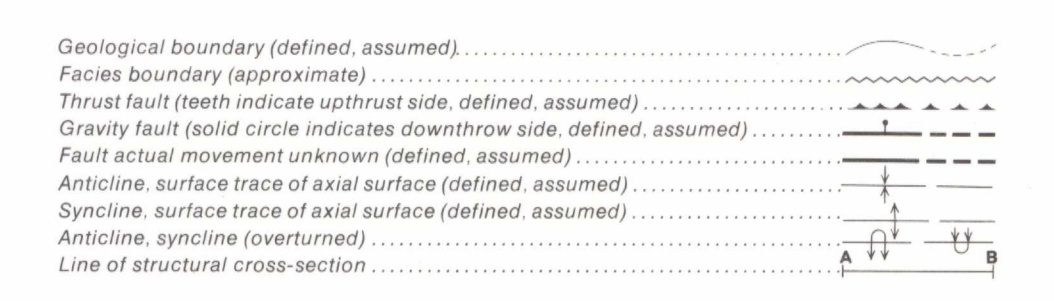
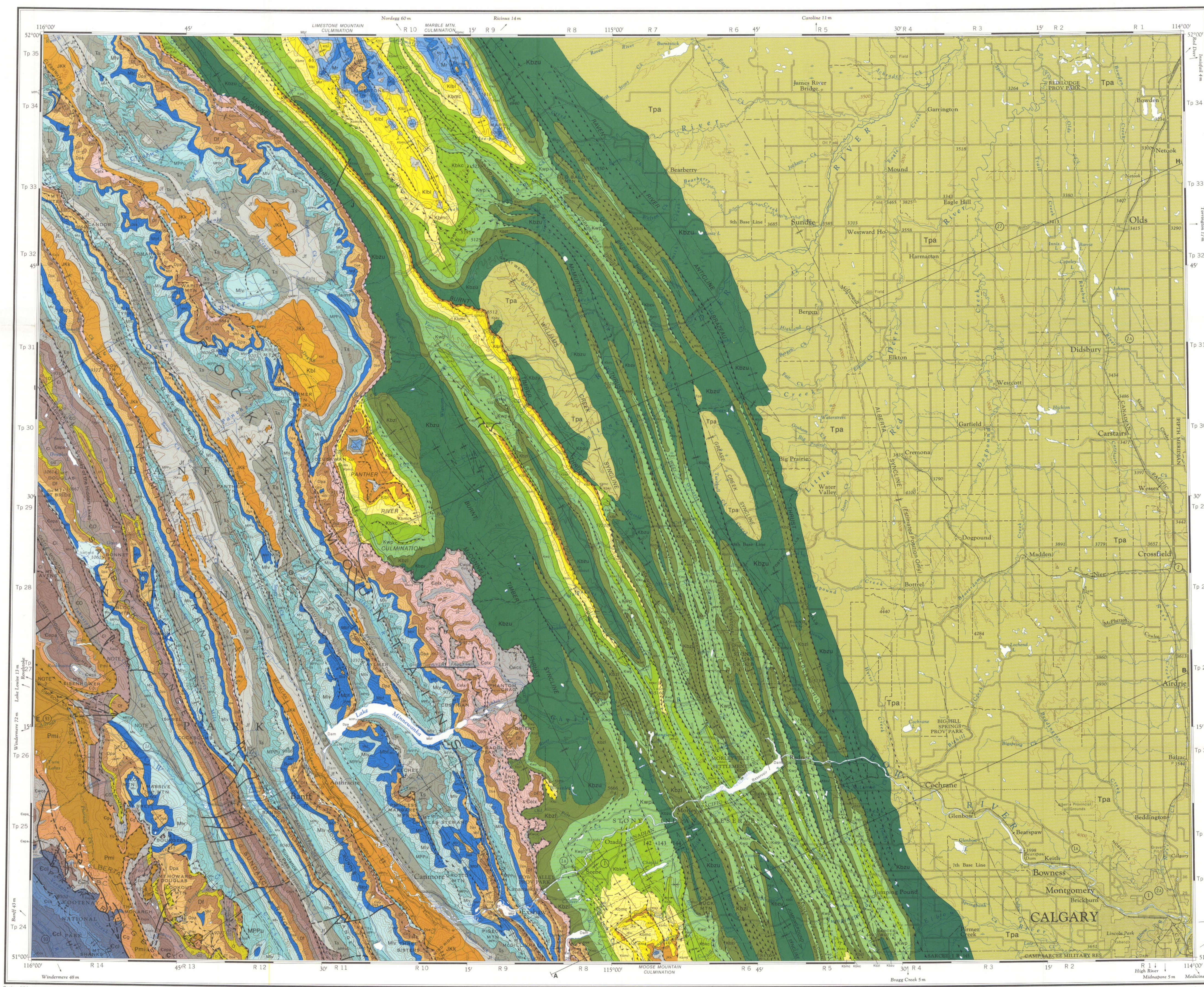


LEGEND

CENOZOIC	TERTIARY PALEOCENE	
	Tpa	PASKAPOO FORMATION: sandstone, mudstone, siltstone, conglomerate (nonmarine)
	CRETACEOUS UPPER CRETACEOUS	
	Kbzu	BRAZEAU FORMATION (upper part): sandstone, mudstone, siltstone, conglomerate (nonmarine); includes some Bearpaw Formation marine shales in eastern subsurface
	Kbzl	BRAZEAU FORMATION (lower part): sandstone, mudstone, siltstone, conglomerate (nonmarine)
	ALBERTA GROUP	
	Kwp	WAPIABI FORMATION: shale, siltstone and minor sandstone (marine); (includes Klp, LEE PARK FORMATION in east subsurface)
	Kbkc	CARDIUM AND BLACKSTONE FORMATIONS: shale, sandstone and minor conglomerate (marine)
	LOWER CRETACEOUS BLAIRMORE GROUP	
	Kbmc	BEAVER MINES AND MILL CREEK FORMATIONS (southeast only): sandstone, mudstone, siltstone and conglomerate (nonmarine)
Kibl	CADOMIN FORMATION AND LOWER BLAIRMORE: sandstone, shale, siltstone and conglomerate (nonmarine)	
BLAIRMORE GROUP		
Kbl	Undivided; includes Kv, Viking Formation in east subsurface	
JURASSIC AND (?) CRETACEOUS UPPER JURASSIC AND (?) LOWER CRETACEOUS		
Jkk	KOOTENAY FORMATION: sandstone, shale, siltstone and coal (nonmarine and minor marine)	
JURASSIC		
Jf	FERNIE FORMATION: shale and sandstone (marine)	
TRIASSIC		
SPRAY RIVER GROUP		
Ts	Siltstone, sandstone, mudstone, shale and dolomite (marine)	
MISSISSIPPIAN, PENNSYLVANIAN AND PERMIAN (Undivided)		
Mppu	RUNDLE GROUP (upper part) (Mount Head and Etherington Formations) AND ROCKY MOUNTAIN GROUP: limestone and dolomite; sandstone in upper part (marine)	
Mlv	RUNDLE GROUP (lower part) LIVINGSTONE, PEKISKO, SHUNDA and TURNER VALLEY FORMATIONS: limestone and dolomite (marine)	
Mbf	EXSHAW AND BANFF FORMATIONS: limestone, shale and dolomite (marine)	
DEVONIAN		
UPPER DEVONIAN		
Dpa	PALLISER (Dw, WABAMUN structure section only) and ALEXO-SASSENACH FORMATIONS: limestone and dolomite (marine)	
Df	FAIRHOLME GROUP CAIRN, FLUME, SOUTHEK AND MOUNT HAWK FORMATIONS: dolomite and minor limestone (includes Middle Devonian Yahatinda Formation at base) (marine)	
ORDOVICIAN		
O	OUTRAM, TIPPERARY QUARTZITE AND SKOKI FORMATIONS: limestone, dolomite, sandstone and siltstone (marine)	
CAMBRIAN AND ORDOVICIAN		
CAMBRIAN		
MIDDLE AND UPPER CAMBRIAN		
Cl	LYNX GROUP WATERFOWL, SULLIVAN, LVELL, BISON CREEK AND MISTAYA FORMATIONS: limestone, shale, dolomite and minor siltstone and sandstone (marine)	
Celp	ELDON FORMATION TO LYNX GROUP: (undivided)	
Ccl	CHANCELLOR FORMATION: (lower part): limestone, slate and dolomite (marine)	
Cwcs	MOUNT WHYTE, CATHEDRAL AND STEPHEN FORMATIONS: limestone, dolomite and shale (marine)	
LOWER CAMBRIAN		
Cg	GOG GROUP Sandstone, siltstone and shale (marine)	
CAMBRIAN		
C	Undivided: (structure sections only)	
PROTEROZOIC		
WINDERMERE (HADRYNIAN) MIETTE GROUP		
Pml	Sandstone, slate and conglomerate (marine)	



Compilation by N.C. Oilerenshaw 1973-1975

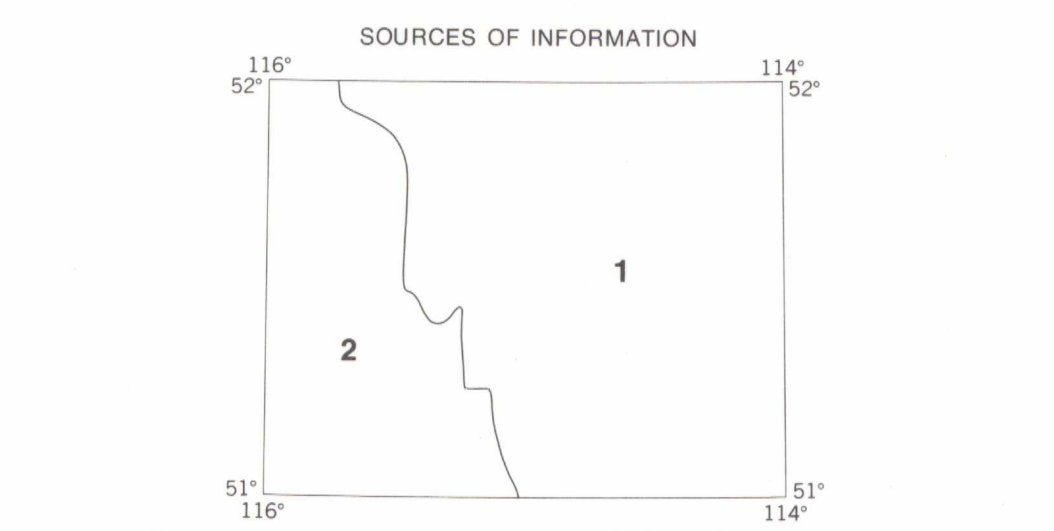
Based on published maps of the Geological Survey of Canada and field work by N.C. Oilerenshaw, 1962-1971. See "Sources of Information"

Note 1 Unmapped
Note 2 Landslide deposits

DIAGRAMMATIC STRUCTURE CROSS-SECTION REFERENCES

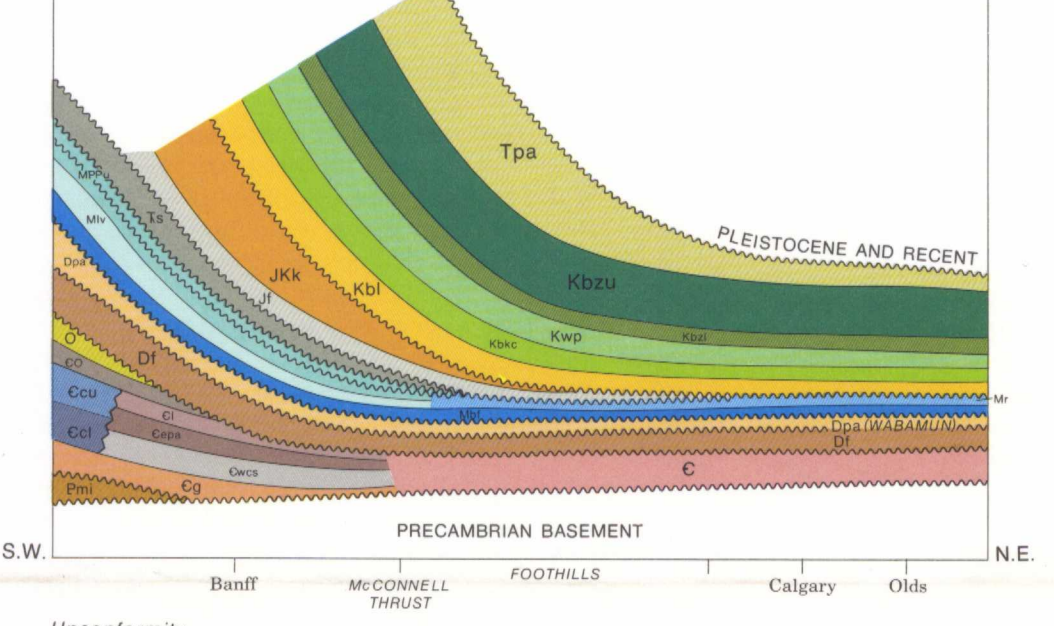
Front Ranges-above McConnell Thrust and west - after R.A. Price and E.W. Mountjoy
Foothills and Plains - below McConnell Thrust and east by N.C. Oilerenshaw

A-B N.C. Oilerenshaw, 1975
C-D After R.A. Price and E.W. Mountjoy (GSC Maps 1265A, 1266A, 1271A, 1294A)
E-F After R.A. Price and E.W. Mountjoy (GSC Maps 1272A, 1296A and 1297A)
G-H N.C. Oilerenshaw, 1976
I-J After R.A. Price and E.W. Mountjoy (above McConnell Thrust) (GSC Maps 1273A, 1274A and 1276A)
N.C. Oilerenshaw (below McConnell Thrust)



1a Older maps of local areas by: G.S. Hume, 1936-1942; G.S. Hume and C.O. Hage, 1941; G.S. Hume and H. Beach, 1944; B.R. Mackay, 1939; and H.H. Beach, 1942
1b Recent maps (published and unpublished) of the entire region, by N.C. Oilerenshaw, 1965-1976
2 Recent maps by R.A. Price and E.W. Mountjoy, 1970-1972

For specific references see: Geol. Surv. Can. Index Sheet 82 (1974) and "Index to Publications 1959-1974". See also "Rocky Mountain Foothills and Front Ranges Calgary Region", Can. Soc. Petrol. Geologists in Exploration Update Field Trip Guidebook, 1975



Geological cartography by D.J. Walter, Institute of Sedimentary and Petroleum Geology, Geological Survey of Canada

Any revisions or additional geological information known to the user would be welcomed by the Geological Survey of Canada

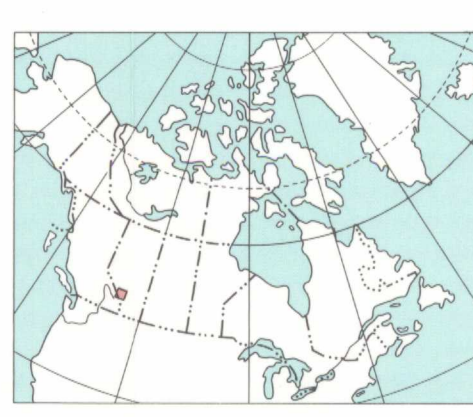
Base map at the same scale published by the Surveys and Mapping Branch, 1967

Copies of the topographical edition of this map may be obtained from the Canada Map Office, Department of Energy, Mines and Resources, Ottawa

Magnetic declination 1977 varies from 22'09" easterly at centre of west edge to 21'21.6" easterly at centre of east edge. Mean annual change 5.5" westerly

Elevations in feet above mean sea level

Copies of this map may be obtained from the Geological Survey of Canada, 601 Booth Street, Ottawa, Ontario K1A 0E8, 3803 - 33rd Street N.W., Calgary, Alberta T2S, 2A7



MAP 1457A
GEOLOGY
CALGARY
WEST OF FIFTH MERIDIAN
ALBERTA-BRITISH COLUMBIA

Scale 1:250,000

Kilometres 0 6 12 18
Miles 0 4 8

Transverse Mercator Projection
© Crown Copyrights reserved

NOT TO BE TAKEN FROM LIBRARY
NE PAS SORTIR DE LA BIBLIOTHEQUE

85C	85B	85A
82N	82Q	82P
237A	1457A	5-1967
82K	82J	82I
1326A		19-1967

1457A