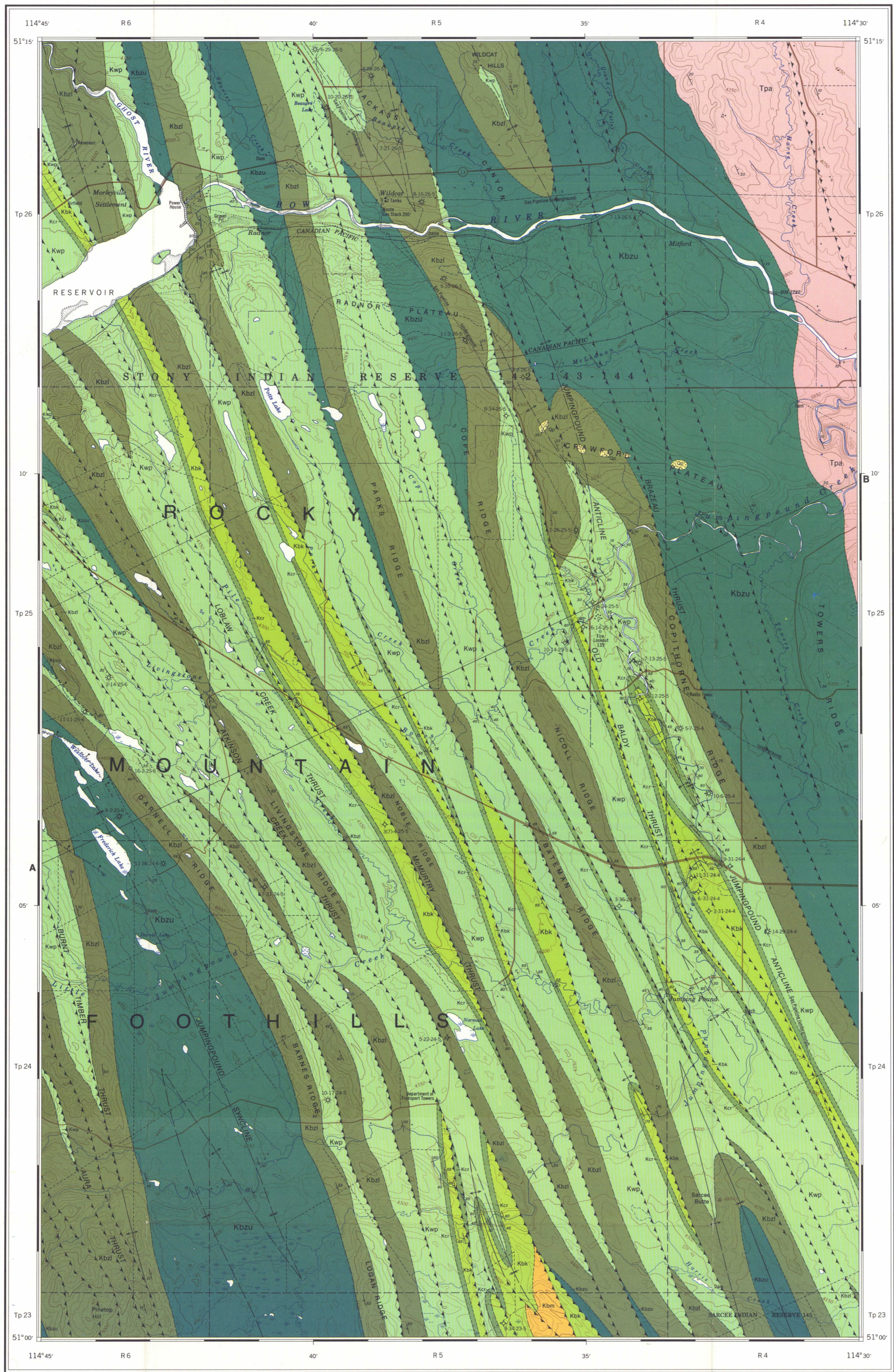
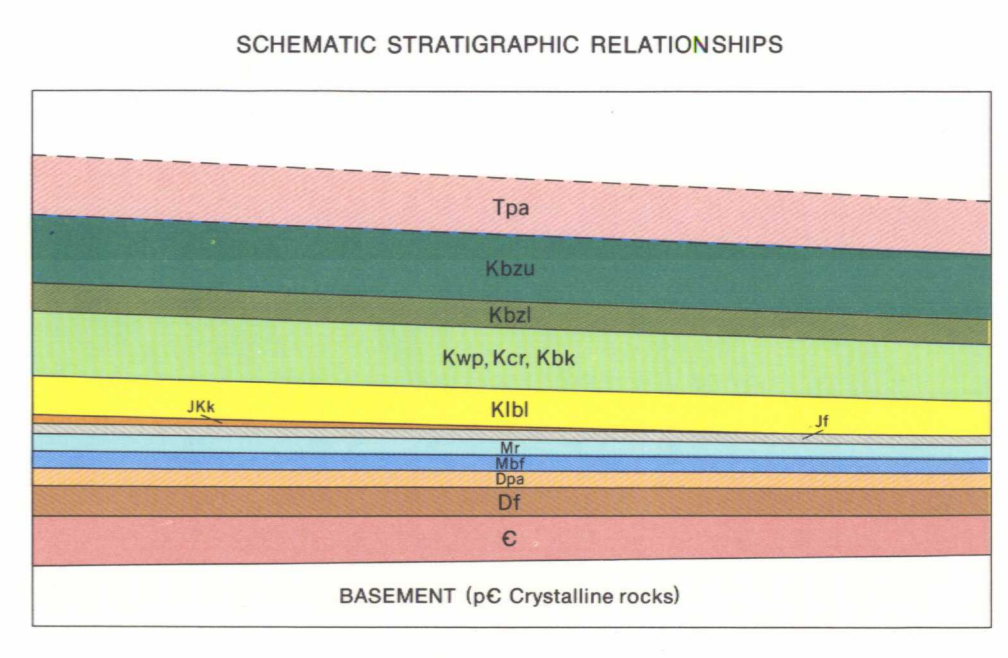


Diagrammatic cross-section along A-B



- LEGEND**
- QUATERNARY (?)**
(?) PLEISTOCENE
Qp Conglomerate (? glaciofluvial)
- CENOZOIC**
- TERTIARY**
PALEOGENE
Tpa PASAPOO FORMATION: flaggy to slabby, yellowish brown weathering, feldspathic sandstone; grey and greenish grey siltstone and rubby mudstone; minor conglomerate (nonmarine)
- CRETACEOUS**
UPPER CRETACEOUS
Kbzu BRAZEAU FORMATION (upper part): flaggy to slabby, grey and minor greenish grey, feldspathic sandstone; greenish grey and grey siltstone and rubby mudstone; minor bentonite and rare coal (nonmarine)
Kbz BRAZEAU FORMATION (lower part): flaggy to slabby, greenish grey and grey feldspathic sandstone; greenish grey and grey siltstone and rubby mudstone; local pebbly sandstone and pebble-conglomerate (nonmarine)
- MESOZOIC**
ALBERTA GROUP
Kwp WAPATI FORMATION: silty, dark grey, platy to rubby shale and calcareous shale, commonly with platy, laminated siltstone and sandstone layers; concretionary shale and mudstone; minor argillaceous sandstone; minor pebble layers and bentonite seams (marine)
Kcr CARDIUM FORMATION: very fine to fine-grained, grey sandstone; grey to dark grey, argillaceous siltstone and silty shale (locally concretionary); minor pebble-conglomerate layers and lenses (marine)
Kbk BLACKSTONE FORMATION: dark grey shale, including silty shale, rubby shale, calcareous shale and minor concretionary shale; grey to dark grey siltstone; minor sandstone, bentonite seams and pebble layers (marine)
- LOWER CRETACEOUS**
BLAIRMORE GROUP
Kbm BEAVER MINES FORMATION: flaggy to slabby, greenish grey and grey, feldspathic sandstone, platy siltstone and rubby mudstone; minor grey shale; minor pebbly sandstone and conglomerate (nonmarine)
- SUBSURFACE ONLY (STRUCTURE CROSS-SECTION)**
Kbl LOWER BLAIRMORE: grey siltstone and sandstone, commonly calcareous, locally limonitic; grey and black, locally carbonaceous shale; minor coal seams and limestone. Includes conglomerate, pebbly sandstone and sandstone of the Cadomin Formation at the base (nonmarine)
- MESOZOIC**
JURASSIC AND (?) CRETACEOUS
UPPER JURASSIC AND (?) LOWER CRETACEOUS
Jkk KOOTENAY FORMATION: grey and black sandstone; grey to black, commonly carbonaceous shale; minor coal (nonmarine and (?) marine)
- JURASSIC**
Jf FERNE GROUP
Shale; minor siltstone and sandstone (marine)
- MISSISSIPPIAN**
Mr RUNDLE GROUP
Limestone and dolomite (marine)
Mbf BANFF FORMATION: argillaceous and silty limestone; calcareous siltstone; limestone (marine)
- DEVONIAN**
UPPER DEVONIAN
Dpa PALLISER FORMATION: dolomite and limestone (marine)
- UPPER DEVONIAN (Undivided)**
Df Mainly dolomite and limestone (marine)
- CAMBRIAN (Undivided)**
C Dolomite, limestone, shale and siltstone (marine)
- PALEOZOIC**
- Geological boundary (approximate, assumed)
Bedding, tops known (inclined, overturned)
Bedding, tops unknown (inclined)
Fault, exact type uncertain (approximate, assumed); solid circle indicates downthrow side)
Thrust fault (approximate, assumed; teeth indicate upthrust side)
Anticline (defined, approximate)
Syncline (defined, approximate)
Gas producer
Location of drilling
Dry (abandoned)
Location (LSD/Sec/Tp/R)
Line of section A B
- Geology by N.C. Ollershaw, 1970-1974
- Based on: field investigation, 1970; aerial photograph interpretation; Geological Survey of Canada Map 653A (Hume, G.S., 1942; Bally, A.W., Gordy, P.L. and Stewart G.A., 1966 (Bull. Can. Petrol. Geol., v. 14, no. 3); and subsurface data



Geological cartography by K.M. Ortman, Institute of Sedimentary and Petroleum Geology, Geological Survey of Canada

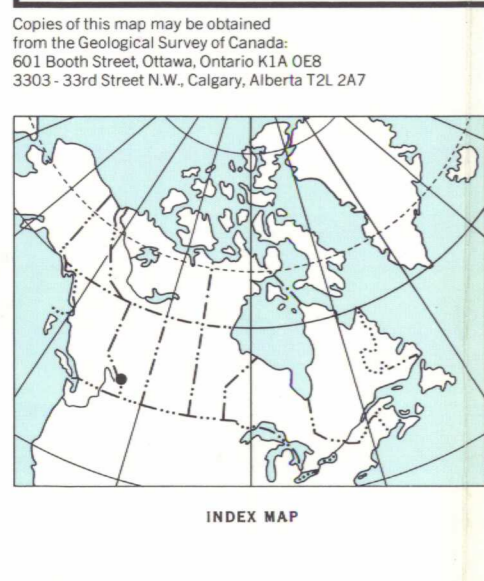
Any revisions or additional geological information known to the user would be welcomed by the Geological Survey of Canada

Base-map at the same scale published by the Surveys and Mapping Branch in 1970

Copies of the topographical edition of this map may be obtained from the Canada Map Office, 615 Booth Street, Ottawa, Ontario, K1A 0E9

Approximate magnetic declination 1975, 21° 38.9' East, decreasing 2.7' annually

Elevations in feet above mean sea level



MAP 1419A
GEOLOGY
JUMPINGPOUND CREEK
(East Half)
WEST OF FIFTH MERIDIAN
ALBERTA
Scale 1:50,000

Kilometres 1 2 3 4
Miles 1 2

Universal Transverse Mercator Projection
© Crown Copyrights reserved

1272A	820/6	1347A	1351A	820/7	820/8
		820/3	820/2		820/1
1266A	1265A	1420A	1419A		
	82/14	888A	654A	667A	606A

NATIONAL TOPOGRAPHIC SYSTEM REFERENCE AND INDEX TO 4200 METRE GEOLOGICAL SURVEY OF CANADA MAPS

NOT TO BE TAKEN FROM LIBRARY
NE PAS SORTIR DE LA BIBLIOTHÈQUE