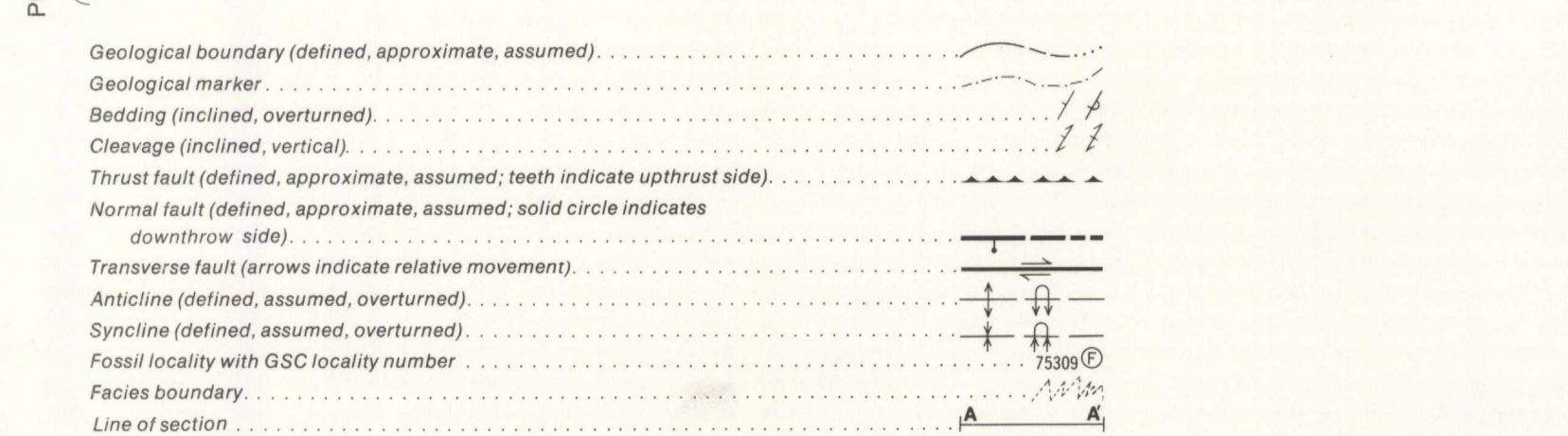
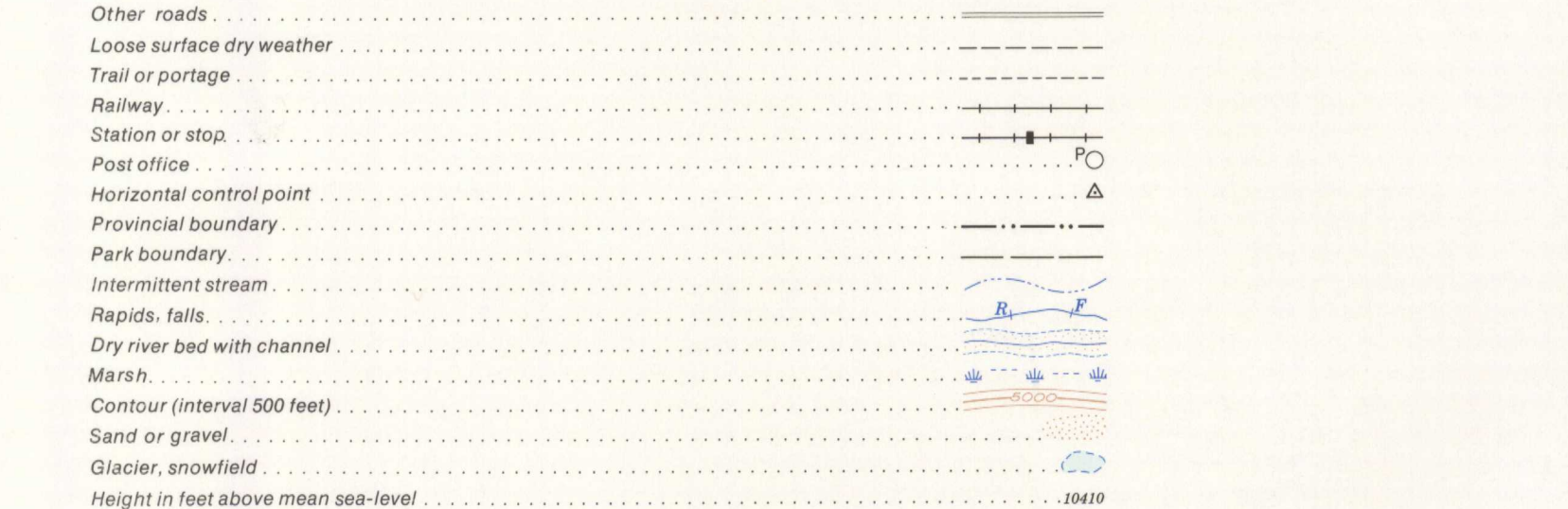


LEGEND

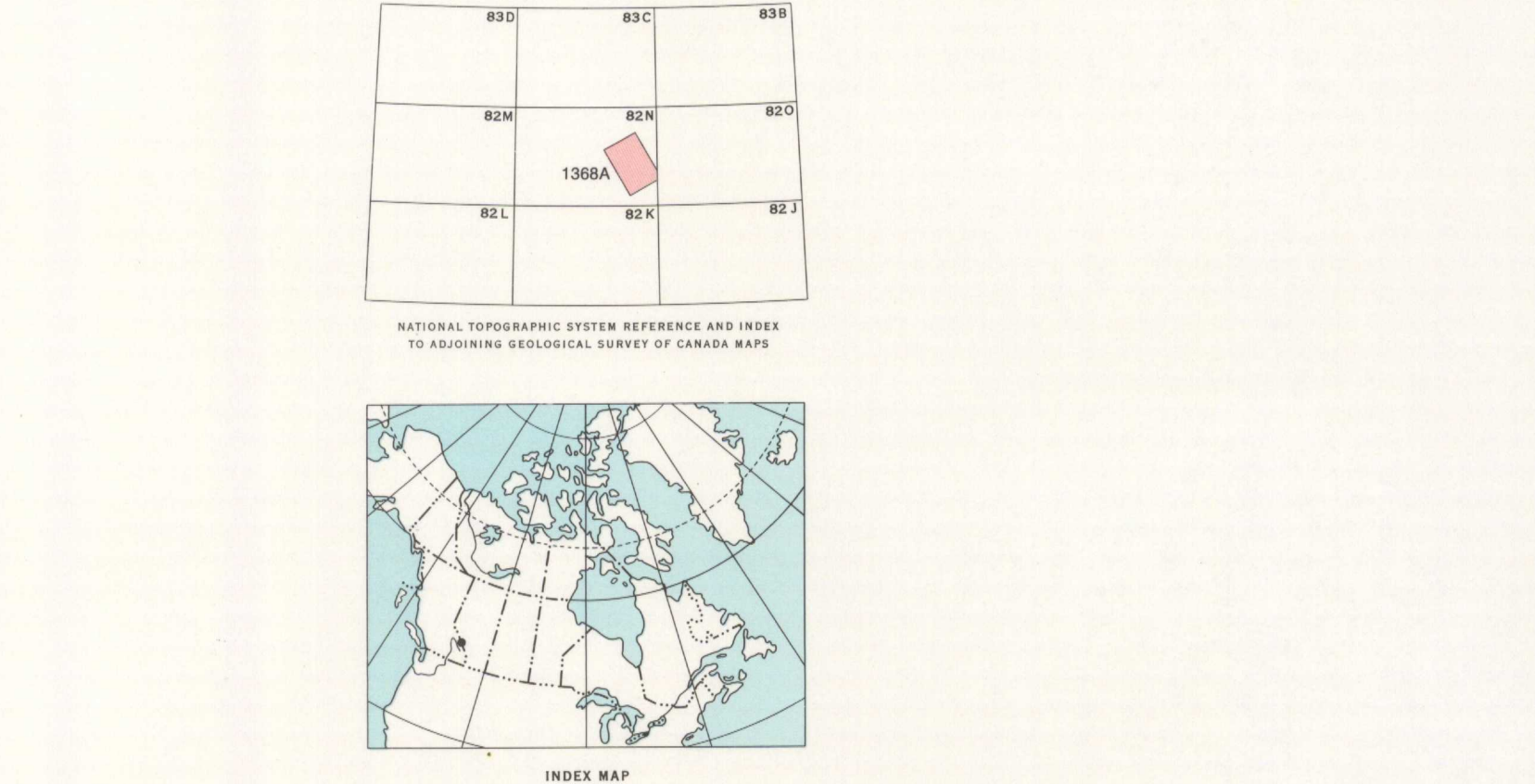
| EASTERN FACIES | | WESTERN FACIES | |
|-------------------|--|--------------------------------|---|
| ORDOVICIAN | LOWER ORDOVICIAN | CAMBRIAN AND ORDOVICIAN | |
| uG | SURVEY PEAK FORMATION: slate, some limestone | uCs | MCKAY FORMATION: shale, some limestone |
| CAMBRIAN | UPPER | CAMBRIAN | UPPER |
| uCb | MISTATA FORMATION: limestone, minor amounts of dolomite | uCu3 | CHANCELLOR FORMATION: Upper Chancellor (upper); shale, minor limestone |
| uCd | BROWN CREEK FORMATION: shale, some limestone | uCu2 | CHANCELLOR FORMATION: Upper Chancellor (middle); interbedded limestone and shale |
| uCe | LYELL FORMATION: dolomite and limestone | uCu1 | CHANCELLOR FORMATION: Upper Chancellor (lower); shale, minor limestone |
| uCu3 | SULLIVAN FORMATION: Upper Sullivan; shale, minor limestone | mCm2 | MIDDLE CAMBRIAN |
| uCu2 | SULLIVAN FORMATION: Middle Sullivan; dolomite, limestone | mCm1 | CHANCELLOR FORMATION: Middle Chancellor (lower); slate with limestone |
| uCu1 | SULLIVAN FORMATION: Lower Sullivan; shale, minor limestone | mCm | CHANCELLOR FORMATION: Middle Chancellor (undivided); interbedded limestone and slate |
| mCw | MIDDLE CAMBRIAN | mCm | CHANCELLOR FORMATION: Lower Chancellor; cleared argillaceous limestone, some shale |
| mCv | WATERFOWL FORMATION: dolomite, some shale | mCm1 | CHANCELLOR FORMATION: Middle Chancellor (lower); slate with limestone |
| mCa | ANTICOM'S FORMATION: shale, limestone, some dolomite | mCm | CHANCELLOR FORMATION: Middle Chancellor (undivided); interbedded limestone and slate |
| mCp | PIKA FORMATION: limestone, some shale | mCm | CHANCELLOR FORMATION: Lower Chancellor; cleared argillaceous limestone with irregular shale interbeds |
| mCd | ELDON FORMATION: limestone, dolomite | mCm | CHANCELLOR FORMATION: Lower Chancellor; cleared argillaceous limestone with irregular shale interbeds |
| mCs | STEPHEN FORMATION: shale, some limestone | mCm | CHANCELLOR FORMATION: Lower Chancellor; cleared argillaceous limestone with irregular shale interbeds |
| mCc | CATHEDRAL FORMATION: dolomite and limestone (includes Mount Whyte Formation: shale and siltstone, at base) | mCm | CHANCELLOR FORMATION: Lower Chancellor; cleared argillaceous limestone with irregular shale interbeds |
| uG | LOWER CAMBRIAN | uG | LOWER CAMBRIAN |
| uG | SOO GROUP: Quartzite sandstone, some shale | uG | LOWER CAMBRIAN |
| Em | PROTEROZOIC | Em | PROTEROZOIC |
| Em | METTE GROUP: Slate, pebble conglomerate, minor limestone | Em | PROTEROZOIC |



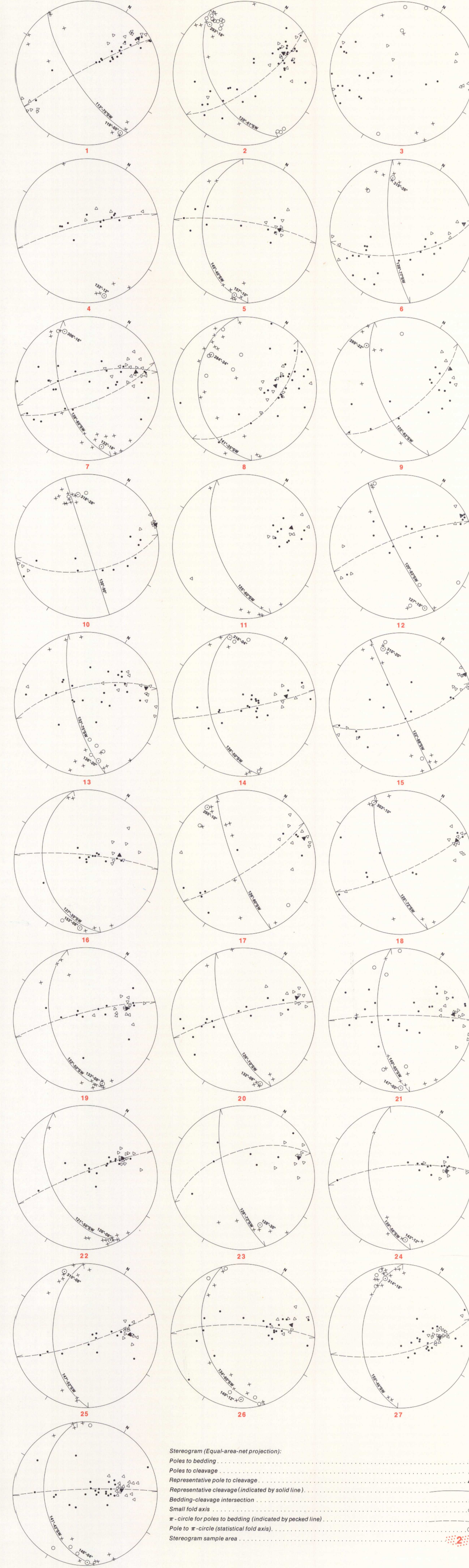
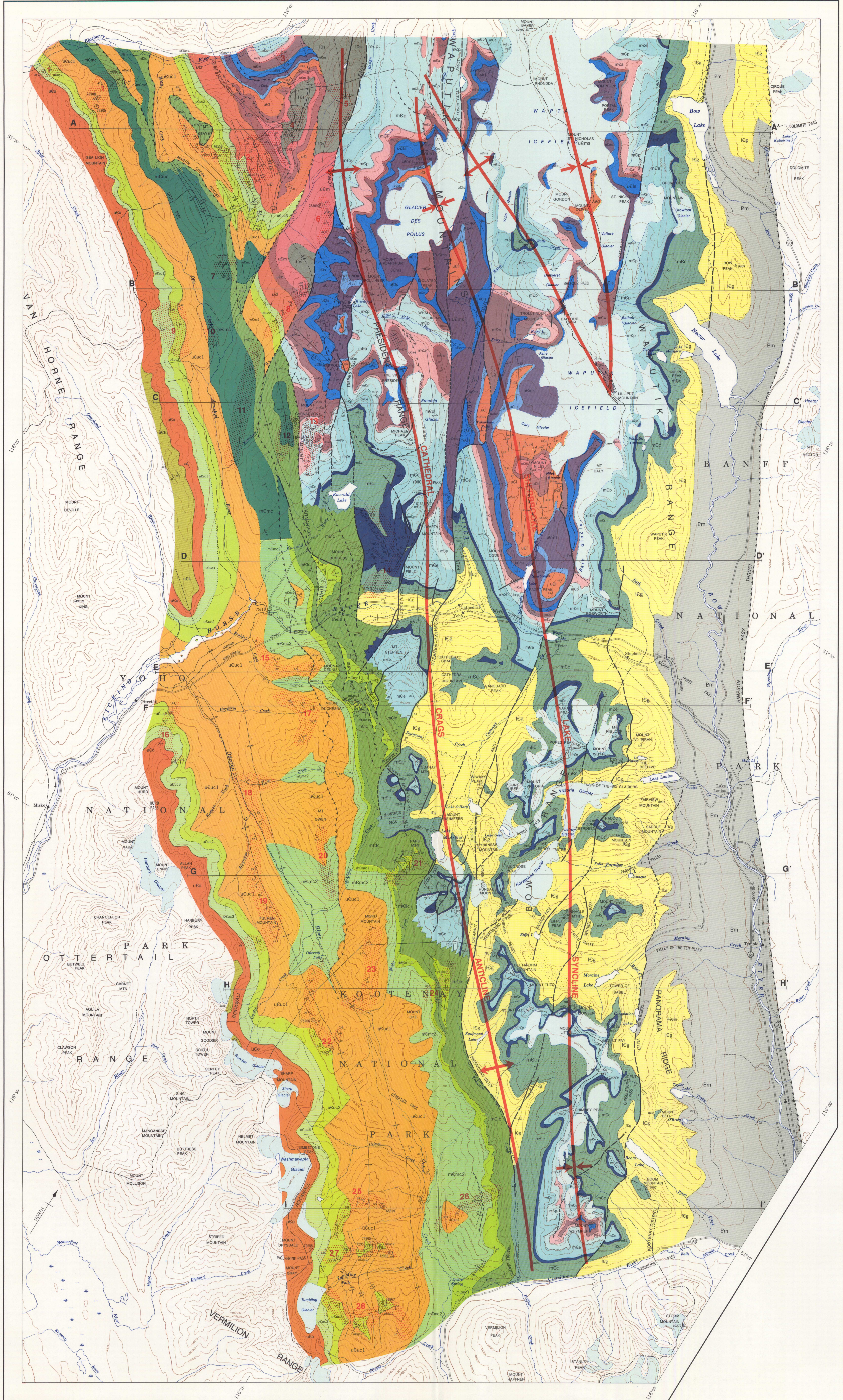
Geology by D. G. Cook, 1985, 1988
 To accompany G.S.C. Bulletin 233 by D. G. Cook, 1973
 Geological cartography by the Institute of Sedimentary and Petroleum Geology, Geological Survey of Canada, 1973
 Any revisions or additional geological information known to the user would be welcomed by the Geological Survey of Canada



Base-map cartography by the Institute of Sedimentary and Petroleum Geology from part of 1:250,000 scale map Golden 824 published by the Army Survey Establishment, R.C.M.C. in 1956
 Copies of the topographical edition of this map may be obtained from the Canada Map Office, 615 Booth Street, Ottawa, Ontario, K1A 0E9
 Approximate magnetic declination 1973, 22°33' E, decreasing 2.7' annually



MAP 1368A
Geology of the Main Ranges of the Rocky Mountains from Vermilion Pass to Blaeberry River and Bow Lake, British Columbia - Alberta
 Scale 1:75,000



Stereonet (Equal-area net projection)
 Pole to bedding
 Pole to cleavage
 Representative pole to cleavage
 Representative cleavage (indicated by solid line)
 Bedding-cleavage intersection
 Small fold axis
 Pole to σ -circle (statistical fold axis)
 Stereonet sample area

NOT TO BE TAKEN FROM LIBRARY
 NE PAS SORTIR DE LA BIBLIOTHÈQUE



MAP 1368A
 Geology of the Main Ranges of the Rocky Mountains from Vermilion Pass to Blaeberry River and Bow Lake, British Columbia - Alberta