

- LEGEND**
- Note: This legend is common to Maps 1344A, 1345A and 1346A
- MESOZOIC**
- 10 NORTH MOUNTAIN BASALT: basalt
  - 9 BLOMIDON FORMATION: siltstone, arenaceous shale, and minor claystone
  - 8 WOLFVILLE FORMATION: sandstone and arkose
- DEVONIAN**
- MIDDLE OR UPPER DEVONIAN
- 7 SOUTHERN NOVA SCOTIA BATHOLITH: mainly quartz monzonite, some granodiorite and aplite; 7a, coarse-grained porphyritic quartz monzonite and granodiorite, finer grained and less porphyritic than 7a; 7c, generally medium-grained, non-porphyritic quartz monzonite; 7d, medium-grained quartz monzonite containing abundant tabular microcline phenocrysts in parallel alignment; 7e, aplite; 7f, line-to-medium-grained granodiorite; 7g, medium-grained porphyritic biotite-rich quartz monzonite and granodiorite containing many meta-sedimentary inclusions
  - 6 MAFIC INTRUSIONS: mostly sills of gabbro; some peridotite and quartz gabbro
- LOWER DEVONIAN**
- 5 TORBROOK FORMATION: shale, siltstone, and quartzite; minor shaly limestone and iron-formation
- SILURIAN**
- UPPER SILURIAN
- 4 KENTVILLE FORMATION: shale, siltstone, and slate
- UPPER SILURIAN OR OLDER
- 3 WHITE ROCK FORMATION: slate with subordinate siltstone, quartzite, and volcanic rocks; 3a, rhyolitic tuff member; 3b, double quartzite member consisting of two pink to purple quartzite beds 30 to 50 feet thick with silty slate between
- ORDOVICIAN**
- MEGUMA GROUP (1, 2)
- 2 HALIFAX FORMATION: siltstone and slate
- ORDOVICIAN OR OLDER**
- 1 GOLDENVILLE FORMATION: quartzite and minor slate; 1a, metamorphosed roof pendants

- Rock outcrop, area of outcrop  
Geological boundary (defined, approximate, assumed)  
Lateral facies change (assumed)  
Limit of geological mapping  
Bedding, tops known (inclined, vertical, overturned)  
Bedding, tops unknown (inclined, vertical)  
Cleavage (inclined, vertical)  
Foliation, generally biotite, in places feldspar phenocrysts (inclined, vertical, dip unknown)  
Axes of minor folds (horizontal, inclined)  
Lineation, trend of (010) crystal face of feldspar phenocrysts  
Trend of complexly folded bed (direction of plunge known, unknown)  
Fault (defined, approximate, assumed)  
Mineralized bed (iron)  
Anticline (defined, approximate)  
Syncline (defined, approximate)  
Syncline (overturned)  
Anticline or syncline (arrow indicates plunge)  
Glacial striae (direction of ice movement unknown)  
Fossil locality  
Locality (isotopic age determination in millions of years)  
Quarry (monument stone)  
Mineral occurrence (hematite, hem; magnetite, mag; manganese, Mn)  
Shall

Geology by W.G. Smitheringale, 1958, 1959

To accompany GSC Memoir 375 by W.G. Smitheringale

Geological cartography by the Geological Survey of Canada

Any revisions or additional geological information known to the user would be welcomed by the Geological Survey of Canada

Base map at the same scale published by the Army Survey Establishment R.C.E. in 1952

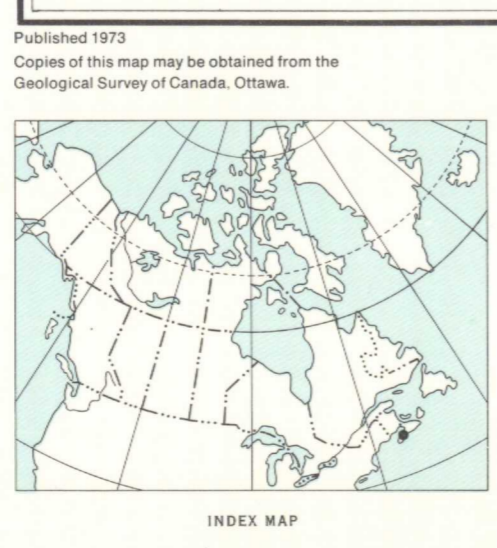
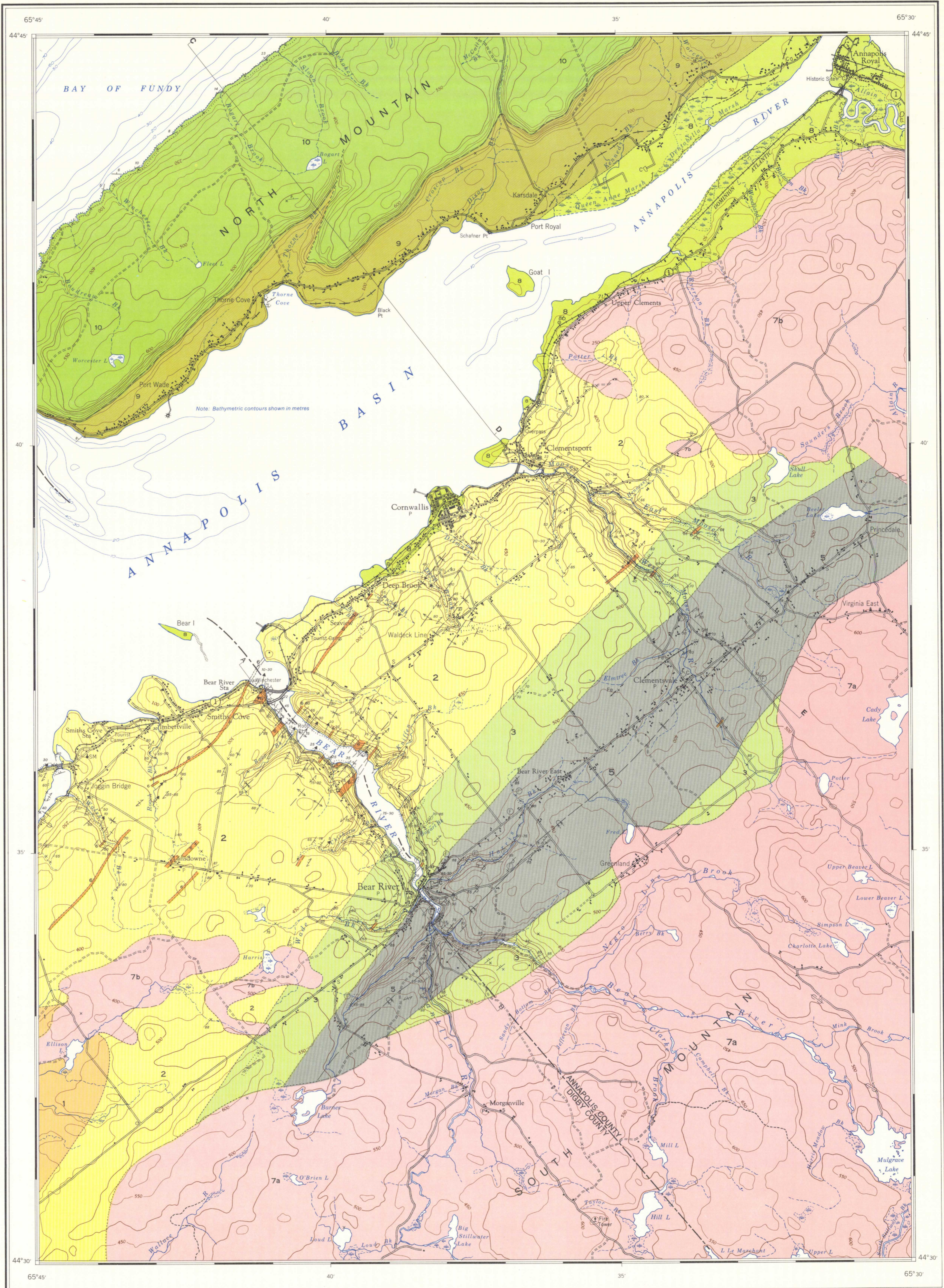
Copies of the topographical edition of this map may be obtained from the Canada Map Office, 615 Booth Street, Ottawa, Ontario, K1A 0E9

Approximate magnetic declination 1972, 20°45' West, decreasing 1.7 annually

Elevations in feet above mean sea-level

Bathymetry from Natural Resource Chart 15144A Canadian Hydrographic Service, 1972

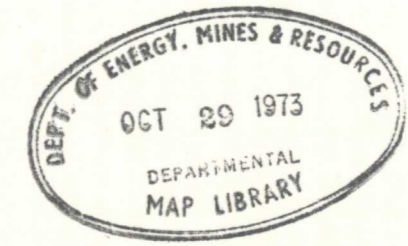
NOT TO BE TAKEN FROM LIBRARY  
PAS SORTIR DE LA BIBLIOTHÈQUE



MAP 1344A  
GEOLOGY  
**DIGBY**  
(East Half)  
NOVA SCOTIA  
Scale 1:50,000

Miles 1 0 1 2  
Metres 1000 0 1000 2000 3000

Universal Transverse Mercator Projection  
© Crown Copyrights reserved



Printed by the Surveys and Mapping Branch

21 H/4	21 H/3	21 H/2
21 A/13	21 A/14	21 A/15
1345A	1346A	
21 A/12	21 A/11	21 A/10
1344A		

NATIONAL TOPOGRAPHIC SYSTEM REFERENCE AND INDEX TO GEOLOGICAL SURVEY OF CANADA MAPS

MAP 1344A  
**DIGBY**  
(East Half)  
NOVA SCOTIA