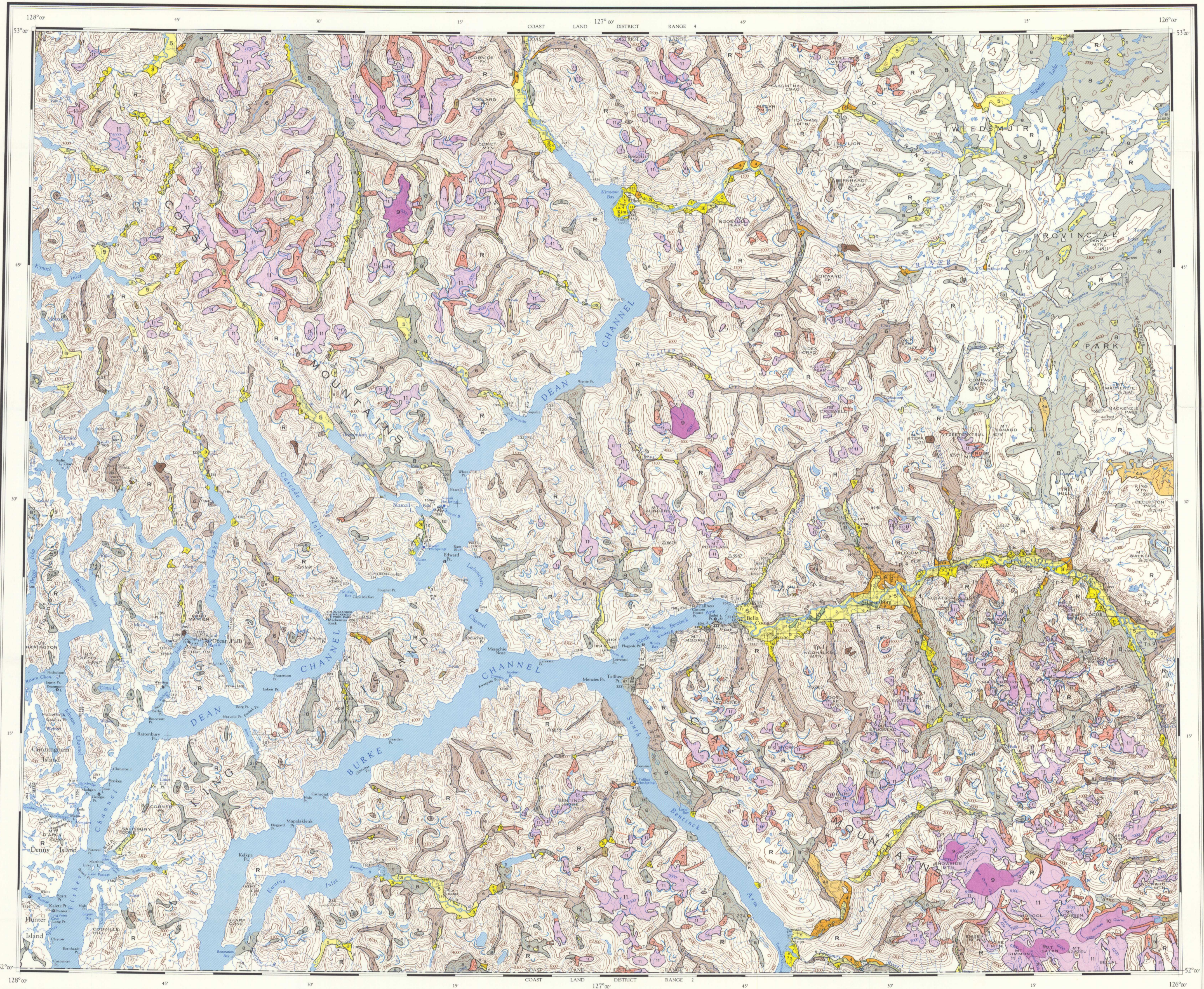


GEOLOGICAL SURVEY OF CANADA
DEPARTMENT OF ENERGY, MINES AND RESOURCES



LEGEND

- 12 Abandoned river channel
- 11 Glaciers undifferentiated
- 10 Valley glaciers
- 9 Ice caps, large firm
- 8 Till, undifferentiated
- 7 Moraines
- 6 Talus
- 5 Alluvium
- 4 4a Terraces; 4a, assumed terraces
- 3 Alluvial fan, cone, delta
- 2 Slide
- 1 Glaciolacustrine plain
- R Bedrock

- Glacial striae (direction of ice movement known, unknown)
- Moraine ridge
- Gradational contact
- Cirques

Geology by A.J. Baer, 1962-1965

Geological information mainly from air photographs, supplemented by field observations

To accompany GSC Memoir 372 by A.J. Baer

Geological cartography by the Geological Survey of Canada

Base map at the same scale published by the Department of Lands, Forests, and Water Resources, British Columbia, 1961-1962

Copies of the topographical edition of this map may be obtained from the Geographic Division, Surveys and Mapping Branch, Department of Lands, Forests, and Water Resources, Victoria, British Columbia

Any revisions or additional information known to the user would be welcomed by the Geological Survey of Canada

Magnetic declination 1971 varies from 25° 22' easterly at the centre of the west edge to 25° 23' easterly at the centre of the east edge. Mean annual change decreasing 2.8"

Elevations in feet above mean sea-level

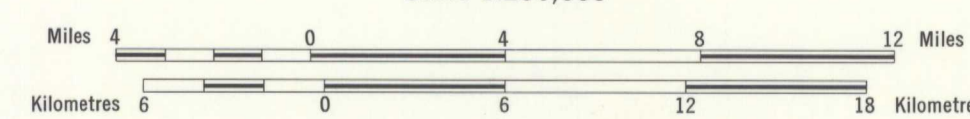
Published, 1972
Copies of this map may be obtained from the Geological Survey of Canada, Ottawa



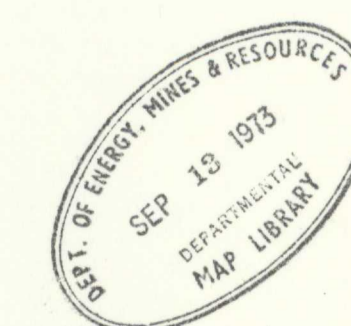
INDEX MAP

MAP 1329A
SURFICIAL GEOLOGY
BELLA COOLA
BRITISH COLUMBIA

Scale 1:250,000



Universal Transverse Mercator Projection
© Crown Copyrights reserved



103H	93E	93F
103A	1329A	93C
102P	92M	92N

NATIONAL TOPOGRAPHIC SYSTEM REFERENCE AND INDEX TO GEOLOGICAL SURVEY OF CANADA MAPS

MAP 1329A
BELLA COOLA
BRITISH COLUMBIA

612 cog 1900 C

1329A